

FACT SHEET



Located on the edge of the St. Augustine campus; the University Inn is a Boutique Bed & Breakfast that offers visitors to the campus comfort, a relaxed atmosphere and convenience. Our stylish rooms are tastefully furnished with authentic Caribbean flavour, each uniquely decorated with luxury finishes and modern fittings. Suites have king size beds while standard rooms are fitted with queen beds.

Key Facts

Check-in and Check-out

- Check-in: 3:00pm
- Check-out: 12:00pm
- Express check-in

Internet

- Complimentary Wireless service

Parking

- Complimentary on-site parking

Property Details

- 2 blocks, 2 floors, 20 rooms
- Front desk, Restaurant and Lounge

Smoke-Free Policy

- This hotel has a smoke-free policy.

Pet Policy

- Pets not allowed

Accessibility

For more information call the general manager contact details below.

- | | |
|---|--|
| <ul style="list-style-type: none"> • Accessible guest rooms have a 32 inch entrance opening • Main entrance is accessible • Pathway to registration desk is accessible | <ul style="list-style-type: none"> • Route to accessible guest rooms is accessible • Service animals allowed for people with disabilities • Restaurant and lounge is accessible |
|---|--|

Guest Room Information

General Room Amenities

- Individually Air Conditioned
- Radio/Alarm clock with I-pod dock
- Luxury Bedding – crisp linens, thick mattress, cotton comforters, decorative pillows
- Hypoallergenic foam pillows
- Electronic safe in room
- Iron and Ironing board available on request
- Mini fridge
- Ice bucket

Suites

- Additional Lounge seating

Bathroom Amenities

- Personal item including shampoo, conditioner and body lotion

Room Entertainment

- High definition Flat screen, wall mounted Television
- Cable TV
- News Cable channels: CNN, BBC, Fox News, R-Today
- Sports Cable channels: ESPN, FSC

Business Amenities

- Electrical outlet 110/120v at desk
- Phone feature: Speakerphone and Voice Mail
- Desk with reading lamp

Services & Amenities

- | | |
|--|---|
| <ul style="list-style-type: none">● Complimentary<ul style="list-style-type: none">○ Daily local newspapers available in lobby○ Complimentary Coffee & Tea in lobby○ Complimentary full buffet breakfast○ Wake up calls | <ul style="list-style-type: none">● Additional Services:<ul style="list-style-type: none">○ Black and white printing/ copying and faxing service available○ Airport transfers available on request – US\$25○ Laundry Service provided at surcharge○ Taxi service |
|--|---|

Dining

- Local restaurant dinner delivery

Location and Driving Directions from the Airport

Location

The University Inn is situated on the U.W.I. St. Augustine Campus and is ideal for visitors to the campus and for business travelers in the Tunapuna/Piarco region. The Inn is within walking distance of the main campus' Administration Building, Principal and Deputy Principal Offices, Bursar's and Registrar's offices, Student Administration, Human Resources, International office SPEC and the faculty offices.

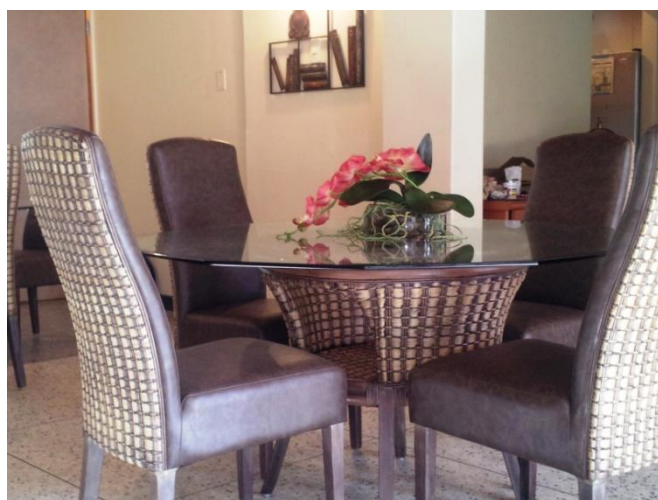
The Inn is conveniently located within five minutes of the Churchill Roosevelt Highway, the Eastern Main Road and the Priority Bus Route with easy access to popular shopping malls, medical facilities in the area and the capital Port of Spain.

Driving Directions from: Piarco International Airport – POS

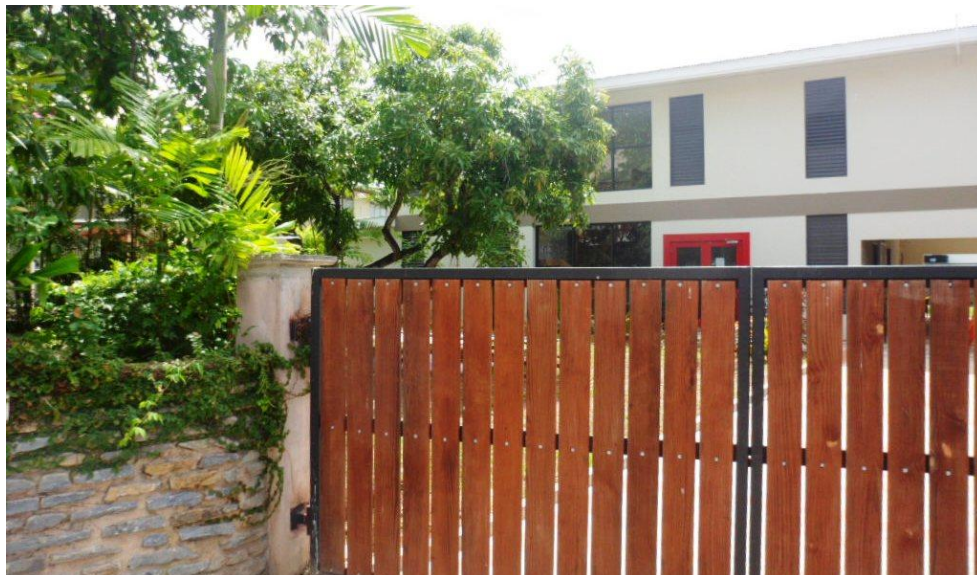
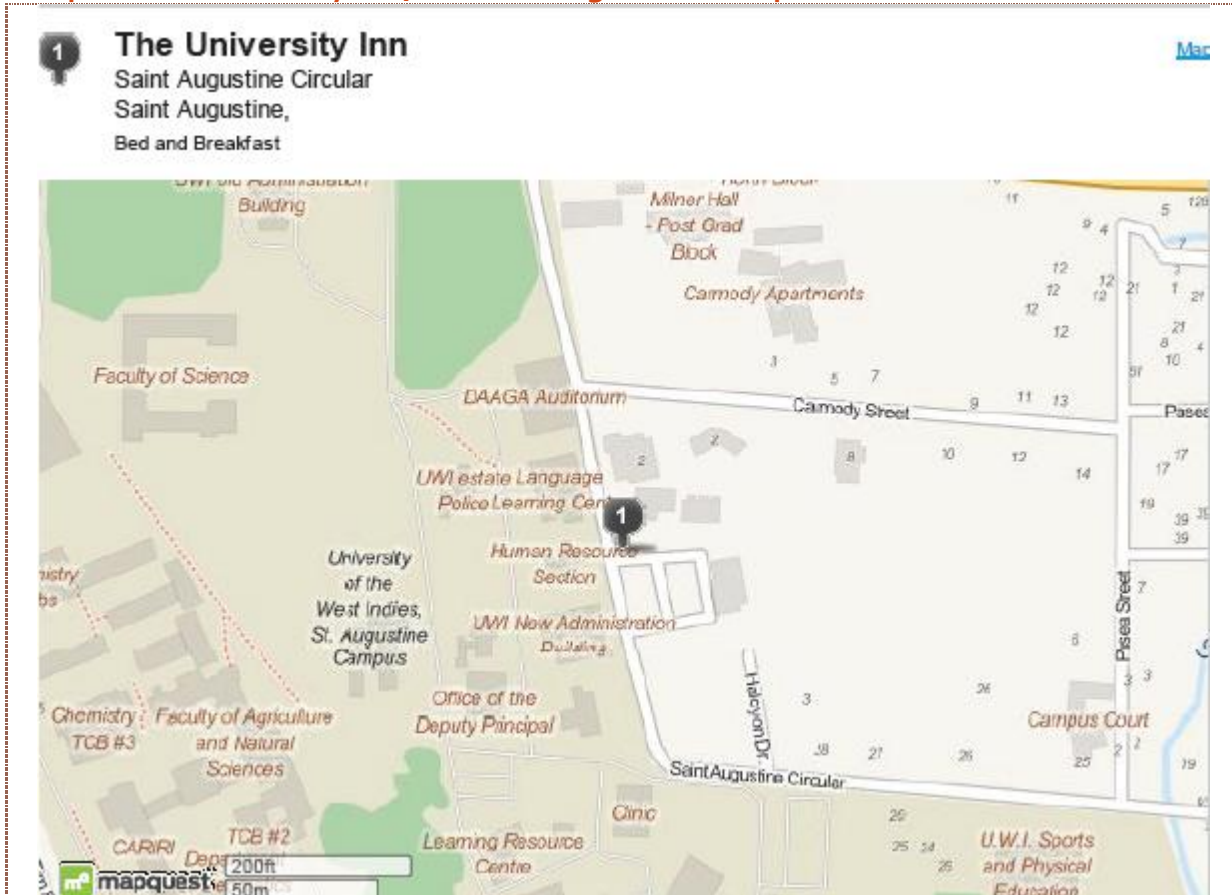
- Exit airport west & drive for 0.5km to Piarco Roundabout
- Turn north onto BWIA Boulevard & drive 1.2km
- Turn West (left) onto Churchill Roosevelt Highway & drive for 7km (to UWI Exit)
- At exit, turn North (right) onto College Trace for 0.2km.
- Turn East (right) onto Watts Street and drive for 0.3km.
- Turn North (left) onto Stratham Lodge Street & drive for 0.2km
- Turn West (left) onto St. Augustine Circular road & drive to Inn for 0.3km

The Total Trip Distance is 9.7 km NW of airport

Note: To drive you will need a valid international driver's permit or one issued in the Bahamas, Canada, England, France, Germany or the United States of America. This permit is valid for 90 days after arrival.



Map of The University Inn, UWI St. Augustine Campus



Room Rates & Booking Policies

Room Type	Single Occupancy	Double Occupancy	Extra Child
Standard Queen	US\$110	US\$120	US\$5
PVC Junior Suite	US\$130	US\$140	US\$5
Vice Chancellor Suite	US\$140	US\$150	US\$5

Daily Rates are:

- Quoted in US\$ inclusive of daily full breakfast. Exchange Rates US\$1 to TT\$6.30
- Daily rates are subject to 10% Room tax and 15% VAT
- Bookings must be guaranteed with a major credit card at time of booking. Card will not be charged until time of arrival or in the event of a cancellation or no show.
- Full Payment due on arrival
- Please note: For security purposes, you will be asked to provide a valid photo ID at check-in.

Cancellation Policy:

- Cancellation up to 3 days before arrival – no charge
- Cancellation up to 0 day before arrival including early departure – 1 night charge

Contact Details

The University Inn

General Manager: Lisa Blake-Williams

Email: Lisa.Blake-Williams@sta.uwi.edu

Reservations: theuniversityinn@sta.uwi.edu

Address

U.W.I. St. Augustine Campus, St. Augustine Circular Road, St. Augustine, Trinidad

Tel: 1.868.645.5959. Fax: 1.868.662.9635.

www.facebook.com/TheUniversityInn

Privacy Statement

The University Inn does not share the personal information you submit to unrelated third parties. Your information will be kept on a secure database exclusively used by St. Augustine Enterprise Company Limited. Your information may be used for marketing purposes, exclusively by The University Inn and its affiliates.

