

# SOCIAL MONITORING

In order to address the interest of the society some objectives and targets are established. Supervising and ensuring the achievements of the set objectives is classified as Social Monitoring or Social Accountability.



**The Rose Foundation**  
*"The Realisation of Selfless Expression"*

# The questions are

- Is all well?
- Is all on track?
- Are all in harmony, for the well being, of the society and the common good?
- Is what was intended being achieved?

# Some of the key questions social monitoring seeks to answer include

- Are the pre-identified outputs being produced as planned and efficiently?
- What are the issues, risks and challenges that we face or foresee that need to be taken into account to ensure the achievement of results?
- What decisions need to be made concerning changes to the planned work in subsequent stages?

# SOCIAL MONITORING QUESTIONS

- Will the planned and delivered outputs continue to be relevant for the achievement of the envisioned outcomes?
- Are the outcomes we envisaged remaining relevant and effective for achieving the overall national priorities, goals and impacts?
- What are we learning?



**The Rose Foundation**  
*"The Realisation of Selfless Expression"*

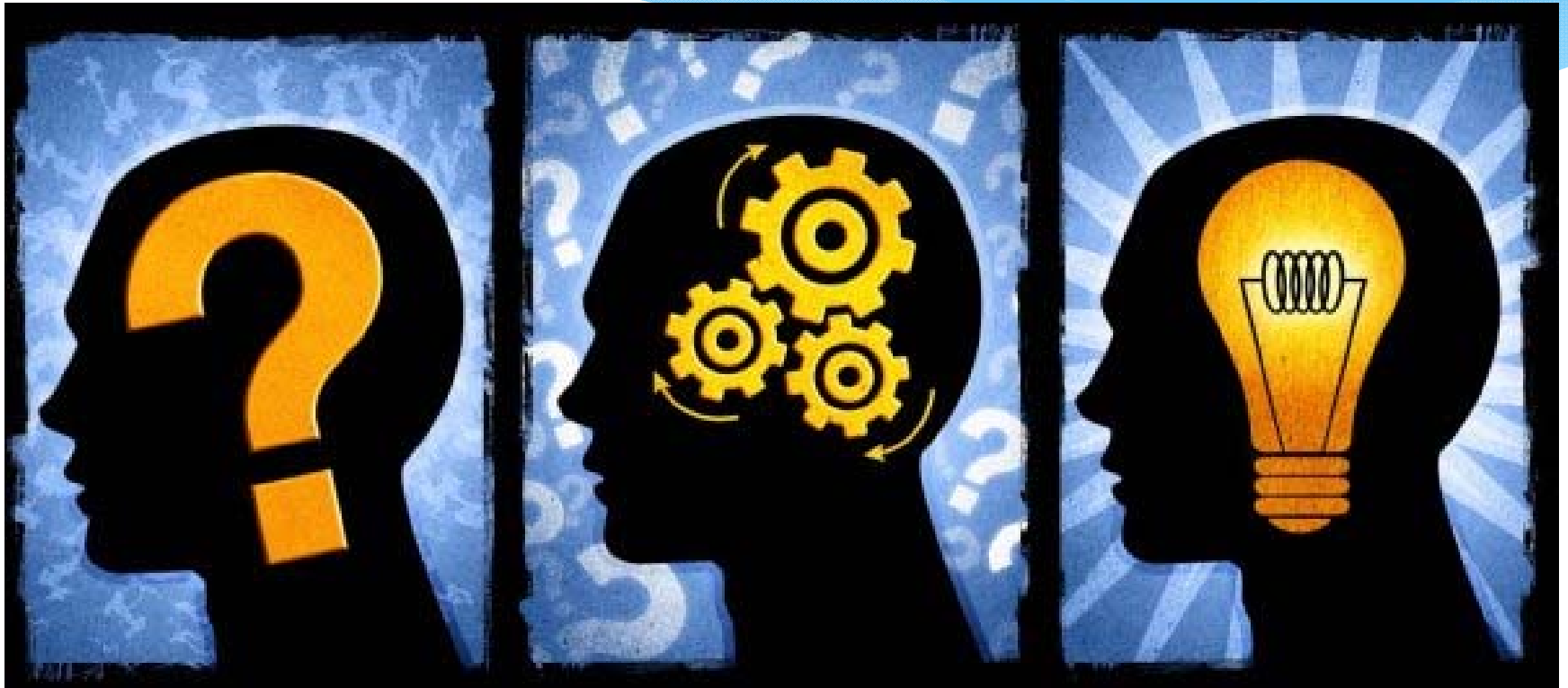
# Social monitoring requires social vigilance and there is a need to clarify

- \* **What is to be monitored?**
- \* **What are the activities needed to monitor what needs to be monitored?**
- \* **Who is responsible for monitoring?**

# SOCIAL MONITORING REQUIRES SOCIAL VIGILANCE

- \* **When is monitoring to be done and where?**
- \* **How is monitoring carried out (methods)?**
- \* **What resources are required and from where are they committed?**

# QUESTIONS



# SOCIAL MONITORING

## CONCLUSION...



A close-up photograph of several vibrant red roses. The petals are tightly packed and show a rich, deep red color. In the foreground, a white rectangular card is placed diagonally, partially overlapping the roses. The card has the words "THANK YOU!" printed in a bold, black, serif font, centered on the card. The background is a plain, light-colored surface, possibly white or light grey, which makes the red roses and the white card stand out prominently.

**THANK  
YOU!**