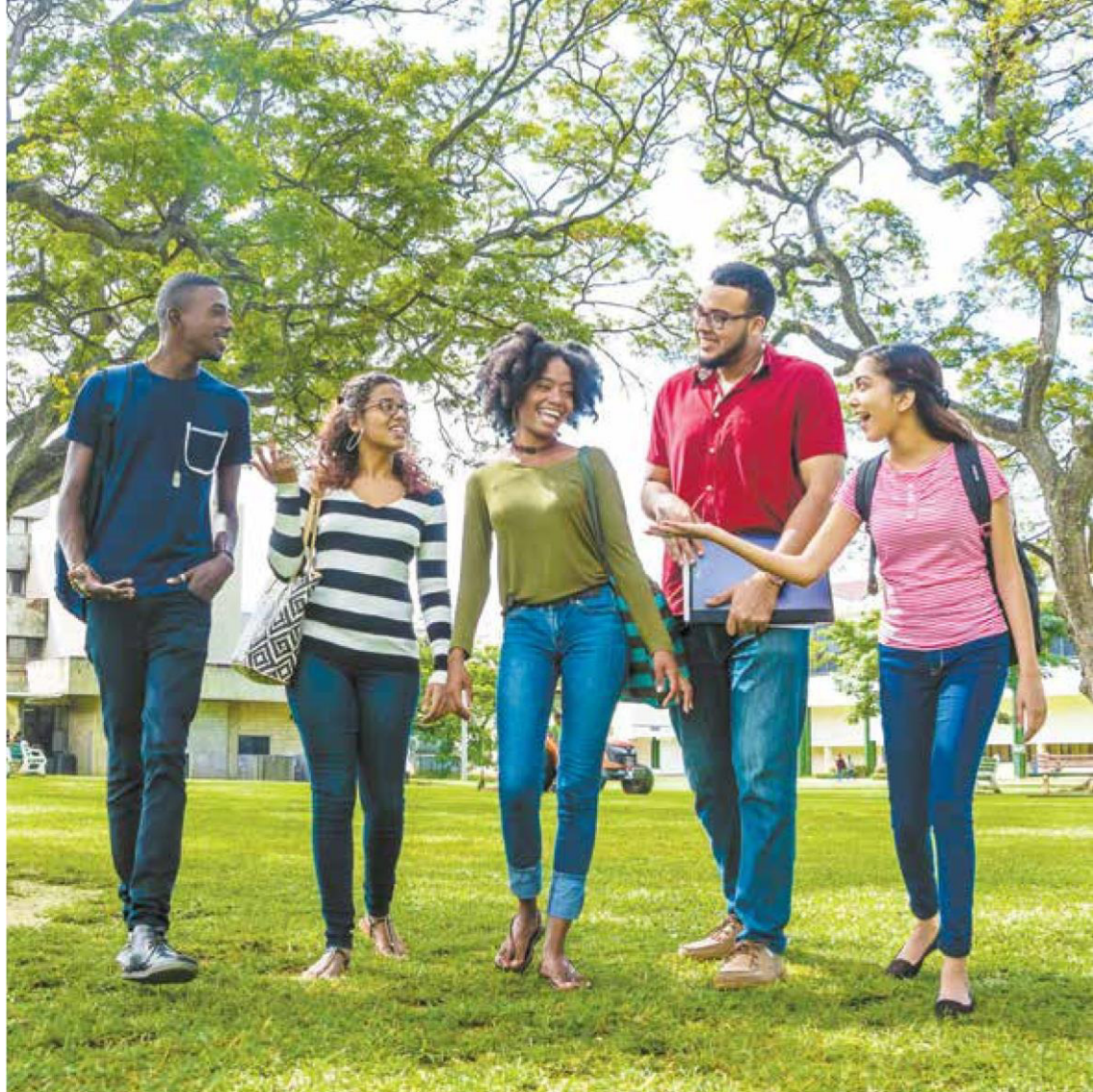




UWI

ST. AUGUSTINE
CAMPUS



THE UNIVERSITY OF THE WEST INDIES
ST. AUGUSTINE CAMPUS

Student Statistical Digest 2012/2013 – 2016/2017

Prepared by the Campus Office of Planning and Institutional Research

Contents

About the Digest.....	2
Introduction.....	2
Summary Statistics 2016/2017.....	3
Definitions of Key Terms and Concepts	4
Section 1 Trends in the number of Applicants, Offers and New Admissions	5
Table 1 Trends in the Applicants, Offers and New Admissions 2007/2008 - 2017/2018.....	5
Figure 1-1 Trends in number of Applicants 2007/2008 -2017/2018	5
Figure 1-2 Trends in Offers versus New Enrolment 2007/2008 – 2017/2018.....	5
Section 2 Trends in Student Enrolment	6
Table 2.1 Enrolment Snapshot 2016/2017 versus 2017/2018.....	7
Table 2.2 Total Enrolment by Student Level 2012/2013 to 2016/2017	8
Table 2.3 Total Enrolment by Student Level, Faculty and Student Session 2012/2013 to 2016/2017.....	8
Table 2.4 Total Enrolment by Student Level, Faculty and Degree Type 2012/2013 – 2016/2017.....	11
Table 2.5 New Student Admissions by Student Level and Faculty 2012/2013 – 2016/2017	14
Table 2.6 Total Other Student Enrolment by Student Level 2012/2013 – 2016/2017	15
Table 2.7 Total Other Student Enrolment by Faculty and Programme 2012/2013 – 2016/2017.....	15
Section 3 Student Demographic Trends for UG and PG Students 2012/2013 – 2017/2018	16
Table 3.1 Student Demographics Snapshot 2016/2017 versus 2017/2018	16
Table 3.2 Total Enrolment by Student Level, Faculty and Sex 2012/2013 to 2016/2017.....	17
Table 3.3 Total Enrolment by Student Level, Sex and Age Group 2012/2013 – 2016/2017	19
Table 3.4 Total Enrolment by Student Level and Country of Nationality for Contributing Countries 2012/2013 – 2016/2017.....	20
Table 3.5 Total Enrolment by Student Level and Country of Nationality by Non-Contributing Countries 2012/2013 – 2016/2017	21
Section 4 Undergraduate and Postgraduate Faculty Trends	24
Figure 4.1 Undergraduate Enrolment by Faculty 2012/2013 – 2016/2017	24
Figure 4.2 Postgraduate Enrolment by Faculty 2012/2013 – 2016/2017	24
Section 5 Undergraduate First Year Retention Trends.....	25
Table 5.1 First Year Retention Rates for Undergraduate Degree Seeking Students 2014 – 2017.....	25
Section 6 Undergraduate and Postgraduate Graduation Trends	26
Table 6.1 Average time to graduation for Undergraduate Full-Time Degree Seeking Students by Sex and Faculty 2012/2013 – 2016/2017	26
Table 6.2 Snapshot of the Graduating Class of 2017 by Faculty, Degree Level, Sex and Age Group.....	27
Table 6.3 Top 5 Degrees with highest number of awardees by Degree Type for 2012/2013 – 2016/2017	28
Table 6.4 Graduate Output for Undergraduate and Postgraduate Students by Student Level and Faculty 2012/2013 – 2016/2017	30
Table 6.5 Graduate Output for Undergraduate and Postgraduate Students by Student Level and Sex 2012/2013 – 2016/2017.....	30
Table 6.6 Graduate Output of Undergraduates by Degree Type and Degree Honours 2012/2013 – 2016/2017	31
Table 6.7 Graduate Output of Postgraduates by Degree Type and Degree Honours 2012/2013 – 2016/2017	33
Section 7 2015/2016 Graduate Tracer Survey Highlights.....	35
Figure 7.1 Graduates' Employment Status	35
Figure 7.2 Graduates' Sector of Employment.....	35
Figure 7.3 Reasons for Graduates' Unemployment.....	35
Figure 7.4 Major Areas of Economic Activity of Graduates	35
Figure 7.5 Graduates' Gross Monthly Salary	35
Section 8 Appendices	36
Appendix 1 Enrolment by Programme and Degree Type 2016/2017	36
Appendix 2 Top 10 Undergraduate and Postgraduate Programmes with Highest Enrolment	59
Appendix 3 Total Enrolment for Faculty of Medical Sciences by Student Level and School /Department	60
Appendix 4 Graduation Head Count for Faculty of Medical Sciences by Student Level and School /Department	60

About the Digest

Welcome to The University of the West Indies, St. Augustine Campus's Student Statistical Digest for the academic year 2016/2017. It presents a comprehensive collection of official historical and current data on the student population. These statistics are being presented to the St. Augustine Campus Council and the wider public in a format where the statistics cover a five-year period (2012/2013 to 2016/2017) and for Semester 1 of the current academic year 2017/2018. The data presented examine new student admissions, total and faculty enrolment, and graduation trends. Some new dimensions have been added this year including student applications, retention and the average time to graduate.

This report is the result of a collaborative effort between the Campus Office of Planning and Institutional Research (COPIR) and the Office of the Campus Registrar, with key input from other units including the Student Admissions section, the Office of Graduate Studies and Research (OGSR) and the Examinations section of The UWI St. Augustine Campus. We are grateful as well for the support of the Campus Information Technology Service (CITS).



Introduction

The University of the West Indies is a four-campus tertiary education institution supported by 17 contributing countries. It offers undergraduate and postgraduate degrees in various fields of study to students from around the region and internationally. The St. Augustine Campus in Trinidad was born in 1960 out of the Imperial College of Tropical Agriculture (ICTA) and currently provides higher education to over 17,000 students. The St. Augustine Campus houses seven faculties: Humanities and Education, Social Sciences, Medical Sciences, Law, Science and Technology, Food and Agriculture and Engineering and also hosts a range of research units, centres and institutes. The UWI, St. Augustine campus continues to be dedicated to teaching and learning, research and innovation and to the development of the Caribbean region.

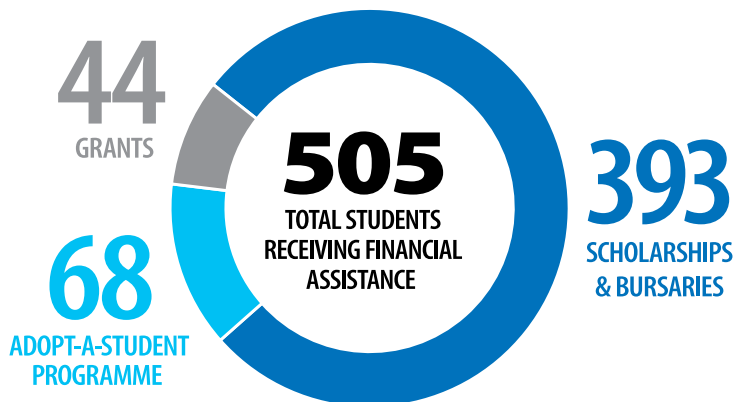
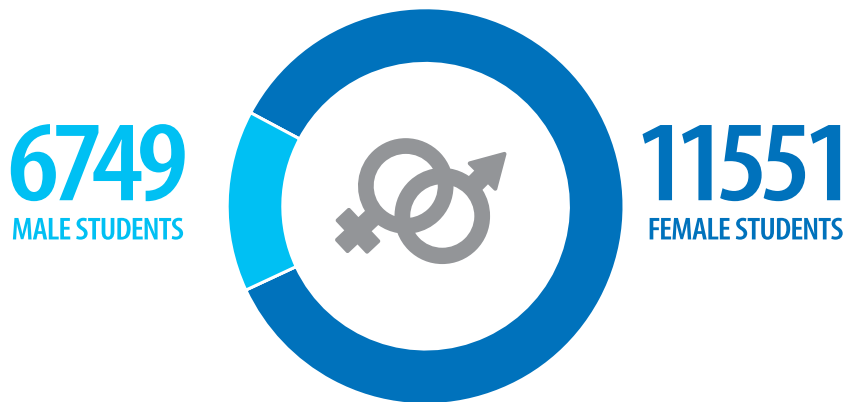
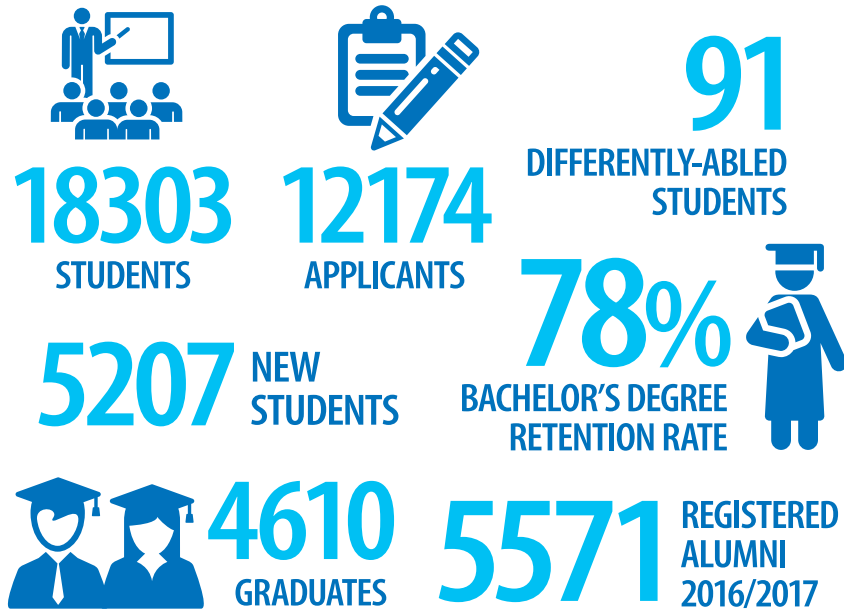
This report on The University of the West Indies, St. Augustine campus is a presentation to the St. Augustine Campus Council for the academic year 2016/2017. The statistical information presented provides quantitative measures and utilizes descriptive statistics to illustrate current and historical data on student participation and performance for the period 2012/2013 to 2015/2016. It also provides a snapshot of student statistics for Semester 1 of the current academic year, 2017/18. The report delivers information on the following areas:

- a. Student statistics over a five-year period in respect of the total number of Student Applicants, New Student Admissions, Enrolment and Graduate output**
- b. Faculty statistical comparisons**
- c. A demographic profile of students by nationality, age and sex**
- d. Student enrolment at the programme level**
- e. Trending data on retention, and the average time to graduate**

This report was prepared by the Campus Office of Planning and Institutional Research (COPIR). These statistics were generated using the Campus's Business Intelligence system.

This document was produced with data that were generated as of January 29th 2018. As such, any updates made to data subsequent to the aforementioned date would not be reflected in the statistics presented.

Summary Statistics 2016/2017



Our Vision

To be an excellent global university rooted in the Caribbean

Our Mission

To advance learning, create knowledge and foster innovation for the positive transformation of the Caribbean and wider world

Our Core Values

Integrity
Excellence
Gender Justice
Diversity
Student Centeredness

Definitions of Key Terms and Concepts

Applicants	The number of applicants to the St. Augustine Campus (head count).
Contributing Students	Students whose nations of origin include the UWI 12 +1 as well as Barbados and Jamaica and Trinidad & Tobago.
Evening	Students who are registered in Certificate/Diploma or Degree programmes which are offered specifically in the Evening University.
Full-Time	Registered students who carry the complete load of course credits associated with their university programme for that semester/academic year.
Graduation Time	The average time taken to complete a programme in calendar years.
Nationals	Students whose nation of origin is Trinidad and Tobago.
New Admissions	Registered students who are new first time entrants to the University.
Non-Contributing	Students whose nation of origin includes all nations other than the UWI 12+1, Barbados, Jamaica or Trinidad and Tobago.
Not Identifiable (NI)	A term used to categorised any area where no data was entered in the data repository.
Offers	The number of applicants (Head count) given institutional acceptance (offers).
Off Campus	Students enrolled in programmes that are administered at UWI-affiliated institutions and are not located on the St. Augustine Campus.
On Campus	Students who attend classes on the St. Augustine or Mt. Hope campuses and are in pursuit of a degree, certificate or diploma programme.
Other Students	Students enrolled in undeclared courses and summer programmes.
Part-Time	Registered students who carry less than the complete load of courses associated with their university programme for that semester/academic year.
Postgraduate/Graduate (PG)	Students enrolled in Higher Degree programmes at the St. Augustine campus which lead to the acquisition of a qualification beyond a first degree such as the PG Diploma, Taught Master, Master of Philosophy, Doctorate etc.
Pre-University Students	Students enrolled in the Pre-Science programme.
Programme	The course of study for which the student has been admitted into the University. This pertains to Undergraduate (BSc, BA, B.Ed.), Certificates, Diplomas, Advanced Diplomas and Higher Degrees (MA, MSc, MPhil, PhD, etc.).
Qualifying	A student reading for courses to qualify for entry to a graduate programme.
Registration/Enrolment	The process by which students, upon acceptance into a given faculty and programme at the University, give written notification of the courses which they wish to pursue during the current semester/academic year. Different aspects of the registration data are represented in the tables. For the purpose of this document, this includes both on and off campus students and excludes other students.
Retention Rate	The percentage of students from a specific entry cohort who re-enroll for a second year of study.
Specially Admitted	Students admitted to the University under special circumstances, such as to attend selected courses not associated with a particular programme.
Student Session	Students who are either enrolled in a full time, part time, evening, and summer basis.
Summer	Students enrolled to pursue courses during the summer semester, which occurs, from June to July of the academic year.
Undergraduate (UG)	Students enrolled at the St. Augustine campus in programmes, which lead to the award of a Certificate, UG Diploma or First Degree.
Undeclared	At UWI 'Undeclared' is a level, in addition to UG, GR, CT, etc. used to differentiate students in a non-degree or certificate programme.

Section 1 - Trends in the number of Applicants , Offers and New Admissions

When observing data collected for just over a decade, the number of Applicants, though exhibiting mild fluctuations, has hovered consistently between 11000 and 13000 with the exception of the academic years 2011/2012 and 2012/2013, where the figures rose slightly above 13000. Offers made, steadily rose over the time period examined until it experienced a minor decline in 2017/2018. Trends in Offers and New Admissions have predominantly balanced since 2014/2015 academic year, with no more than a 5% difference being observed between the two categories.

APPLICATIONS

11K

APPLICANTS ANNUALLY

70%

ENROLLING

OFFERED PLACES

69%

Table 1: Trends in the Applicants, Offers and New Admissions 2007/2008 - 2017/2018											
	2007	2008	2009	2010	2011	2012	2013	2014	2015	2016	2017
No. of Applicants	11018	11225	12556	11700	13515	13073	12118	11413	11389	12174	11574
No. Offered	6818	7026	7882	7888	8800	8515	8596	8286	8482	8624	7978
No. Enrolled	5831	5964	6906	6702	7450	7163	6922	6369	6715	6618	5525
% of Applicants who were offered	61.9%	62.6%	62.8%	67.4%	65.1%	65.1%	70.9%	72.6%	74.5%	70.8%	68.9%
% of Offered who enrolled	85.5%	84.9%	87.6%	85.0%	84.7%	84.1%	80.5%	76.9%	79.2%	76.7%	69.3%

Figure 1-1: Trends in number of Applicants 2007/2008 -2017/2018

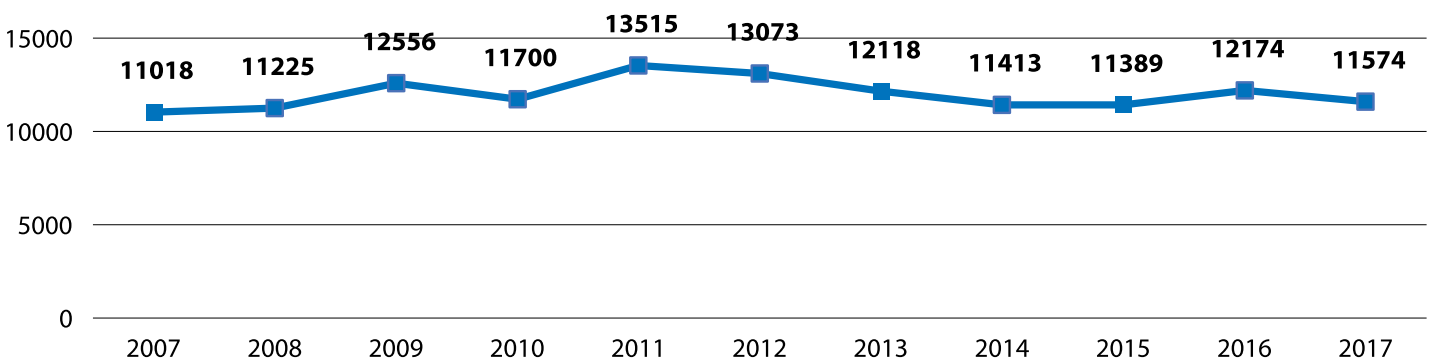
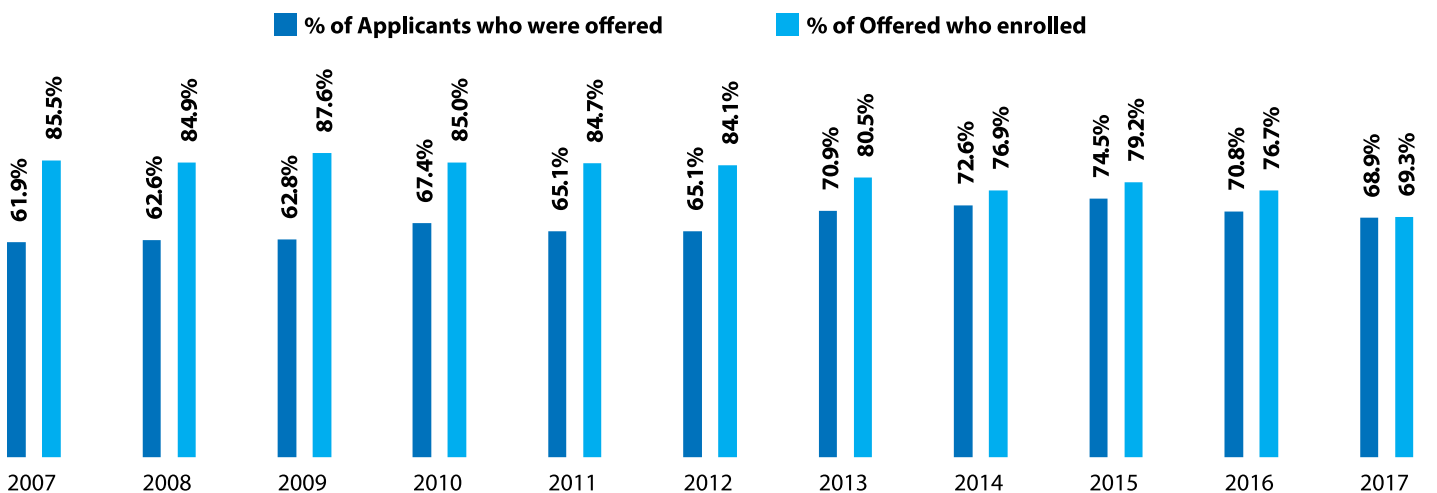


Figure 1-2: Trends in Offers versus New Enrolment 2007/2008 – 2017/2018

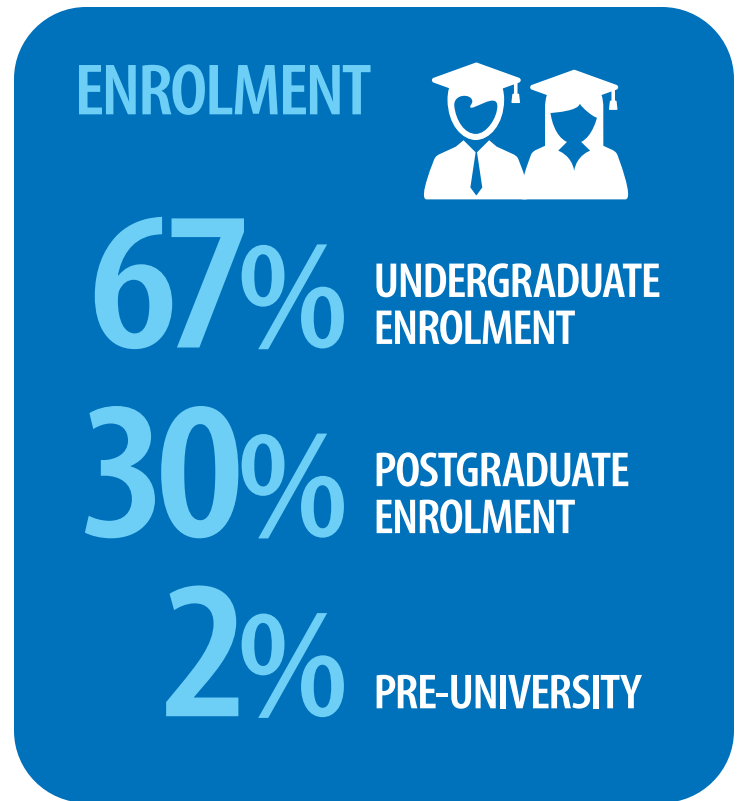


Section 2 – Trends in Student Enrolment

In this section, total enrolment is representative of the seven faculties of Engineering, Food and Agriculture, Humanities and Education, Law, Medical Sciences, Science and Technology and Social Sciences. The Faculty of Food and Agriculture and the Faculty of Science and Technology were established by the demerger of the Faculty of Science and Agriculture in 2012. Additionally, The Faculty of Law was established in 2010.

Over the period 2012/2013 and 2016/2017, The UWI, St. Augustine campus experienced a decline of average 8% in total student enrolment (on and off-campus). Undergraduate enrolment consistently comprised the majority of total student enrolment, accounting for an average of 67% of the total student population and postgraduate enrolment, at approximately 30%. Pre-University students comprised approximately 2% of total student enrolment while Other Students comprised only 1%.

For the purpose of **Table 2.1** below, the figure for Total Enrolment, identified at the top of the table comprises of both Pre-University students and Other Students. All other tables in this section represent data at the undergraduate and postgraduate levels only.



Section 2 – Enrolment Snapshot

Table 2.1: Enrolment Snapshot 2016/2017 versus 2017/2018		
Programme Enrolments	2016	2017*
Total Enrolment	18303	16125
By Status		
Undergraduate	11708	10935
Postgraduate	5920	4687
Pre University	432	397
Other Students	243	206
By Faculty		
Engineering	2415	2077
Food & Agriculture	1068	934
Humanities & Education	2407	2052
Law	396	428
Medical Sciences	2898	2608
Science & Technology	3182	3045
Social Sciences	5856	4973
No College Designated	81	0
By Programme Level		
UG Certificate	452	302
UG Diploma	64	44
PG Certificate	53	36
PG Diploma	492	385
UG Degree	11187	10548
Taught Masters	4087	3194
Doctor of Medicine	268	207
Master of Philosophy	414	355
Doctorate	551	462
Pre-University	432	397
Qualifying	51	48
Other Students	243	147

* Enrolment for 17/18 represents semester 1 of the current academic year and is expected to increase in semester 2.

Section 2 – Total Enrolment Trends for UG and PG Students 2012/2013 – 2016/2017

Student Level	2012	2013	2014	2015	2016
Graduate	6152	6229	5997	5921	5920
Undergraduate	12976	12996	12392	12048	11708
Grand Total	19128	19225	18389	17969	17628

Student Level and Faculty	Student Session	2012	2013	2014	2015	2016
Graduate						
Engineering						
	Not Identifiable	13	10	0	0	0
	Evening	0	0	1	0	0
	Full-time	142	126	136	129	139
	Part-time	1101	1092	1046	1047	985
Engineering Total		1256	1228	1183	1176	1124
Food & Agriculture						
	Full-time	76	89	77	63	68
	Part-time	151	173	163	160	155
	Summer	1	1	0	0	0
Food & Agriculture Total		228	263	240	223	223
Humanities & Education						
	Not Identifiable	6	0	0	1	0
	Full-time	310	355	320	331	283
	Part-time	706	675	655	621	620
Humanities & Education Total		1022	1030	975	953	903
Law						
	Not Identifiable	0	0	0	0	2
	Full-time	0	0	1	3	10
	Part-time	0	0	2	20	41
	Evening	0	0	0	0	1
Law Total		0	0	3	23	54

(table continued on next page)

Section 2 – Total Enrolment Trends for UG and PG Students 2012/2013 – 2016/2017

Table 2.3: Total Enrolment by Student Level, Faculty and Student Session 2012/2013 to 2016/2017						
Student Level and Faculty	Student Session	2012	2013	2014	2015	2016
Medical Sciences						
	Full-time	86	89	97	108	106
	Part-time	392	412	384	433	436
Medical Sciences Total		478	501	481	541	542
Science & Agriculture						
	Not Identifiable	0	0	0	0	0
	Full-time	2	1	0	0	1
	Part-time	4	3	3	1	1
	Summer	0	0	0	0	0
Science & Agriculture Total		6	4	3	1	2
Science & Technology						
	Full-time	201	212	196	182	194
	Part-time	302	329	326	327	383
Science & Technology Total		503	541	522	509	577
Social Sciences						
	Not Identifiable	3	0	0	0	0
	Evening	255	275	306	334	335
	Full-time	279	277	280	315	357
	Part-time	2122	2110	2004	1846	1803
Social Sciences Total		2659	2662	2590	2495	2495
Graduate Total		6152	6229	5997	5921	5920
Undergraduate						
Engineering						
	Not Identifiable	3	8	4	0	1
	Full-time	1402	1405	1425	1340	1270
	Part-time	18	30	31	29	2
Engineering Total		1423	1443	1460	1369	1273

(table continued on next page)

Section 2 – Total Enrolment Trends for UG and PG Students 2012/2013 – 2016/2017

Table 2.3: Total Enrolment by Student Level, Faculty and Student Session 2012/2013 to 2016/2017						
Student Level and Faculty	Student Session	2012	2013	2014	2015	2016
Food & Agriculture						
	Not Identifiable	0	0	6	0	0
	Distance	0	0	1	0	0
	Evening	117	109	97	97	73
	Full-time	757	752	714	724	687
	Part-time	107	104	70	77	76
	Summer	2	0	0	0	0
Food & Agriculture Total		983	965	888	898	836
Humanities & Education						
	Not Identifiable	3	1	4	0	1
	Evening	0	0	0	1	1
	Full-time	1485	1444	1268	1203	1154
	Part-time	435	389	383	365	313
Humanities & Education Total		1923	1834	1655	1569	1468
Law						
	Not Identifiable	1	0	0	0	0
	Full-time	324	303	299	325	339
	Evening	0	0	0	0	1
Law Total		325	303	299	325	340
Medical Sciences						
	Not Identifiable	7	7	5	0	0
	Evening	0	1	1	1	2
	Full-time	1933	2058	2106	2182	2220
	Part-time	129	142	170	138	116
Medical Sciences Total		2069	2208	2282	2321	2338
Science & Technology						
	Not Identifiable	8	3	12	0	9
	Evening	58	33	21	13	8
	Full-time	2112	2032	1890	1971	2058
	Part-time	145	121	98	95	74
	Summer	6	6	5	1	0
Science & Technology Total		2329	2195	2026	2080	2149
Social Sciences						
	Not Identifiable	8	17	13	0	3
	Evening	1236	1228	1153	1102	1018
	Full-time	2624	2767	2574	2346	2267
	Part-time	54	34	41	38	16
	Summer	2	2	1	0	0
Social Sciences Total		3924	4048	3782	3486	3304
Undergraduate Total		12976	12996	12392	12048	11708
Grand Total		19128	19225	18389	17969	17628

Section 2 – Total Enrolment Trends for UG and PG Students 2012/2013 – 2016/2017

Table 2.4: Total Enrolment by Student Level, Faculty and Degree Type 2012/2013 – 2016/2017						
Student Level and Faculty	Degree	2012	2013	2014	2015	2016
Graduate						
Engineering						
	Doctorate	42	43	46	57	57
	Graduate Diploma	32	24	22	19	22
	Master of Philosophy	40	48	43	46	47
	Qualifying	1	0	0	0	2
	Taught Masters	1141	1113	1072	1054	996
Engineering Total		1256	1228	1183	1176	1124
Food & Agriculture						
	Doctorate	26	35	35	38	44
	Graduate Diploma	4	6	6	3	1
	Master of Philosophy	44	43	43	44	50
	Taught Masters	154	179	156	138	122
	Qualifying	0	0	0	0	6
Food & Agriculture Total		228	263	240	223	223
Humanities & Education						
	Doctorate	85	95	99	99	106
	Graduate Certificate	45	22	23	32	25
	Graduate Diploma	226	254	259	275	232
	Master of Philosophy	188	171	144	124	114
	Taught Masters	478	488	450	423	421
	Qualifying	0	0	0	0	5
Humanities & Education Total		1022	1030	975	953	903
Law						
	Graduate Diploma	0	0	0	2	0
	Taught Masters	0	0	3	21	53
	Doctorate	0	0	0	0	1
Law Total		0	0	3	23	54
Medical Sciences						
	Doctor of Medicine	213	250	248	265	268
	Doctorate	20	17	18	16	16
	Graduate Diploma	87	84	83	103	99
	Master of Philosophy	26	25	21	20	26
	Taught Masters	132	125	111	137	133
Medical Sciences Total		478	501	481	541	542

(table continued on next page)

Section 2 – Total Enrolment Trends for UG and PG Students 2012/2013 – 2016/2017

Table 2.4: Total Enrolment by Student Level, Faculty and Degree Type 2012/2013 – 2016/2017						
Student Level and Faculty	Degree	2012	2013	2014	2015	2016
Science & Agriculture						
	Doctorate	0	0	0	0	0
	Graduate Certificate	0	0	0	0	0
	Graduate Diploma	0	0	0	0	0
	Master of Philosophy	0	0	0	0	0
	Taught Masters	6	4	3	1	2
Science & Agriculture Total		6	4	3	1	2
Science & Technology						
	Doctorate	72	77	76	80	77
	Graduate Diploma	1	2	1	0	1
	Master of Philosophy	100	86	77	76	89
	Taught Masters	330	376	368	353	398
	Qualifying	0	0	0	0	12
Science & Technology Total		503	541	522	509	577
Social Sciences						
	Doctorate	208	219	210	241	251
	Graduate Certificate	13	8	12	19	28
	Graduate Diploma	97	82	107	111	138
	Master of Philosophy	125	104	100	84	87
	Taught Masters	2216	2249	2161	2040	1965
	Qualifying	0	0	0	0	26
Social Sciences Total		2659	2662	2590	2495	2495
Graduate Total		6152	6229	5997	5921	5920
Undergraduate						
Engineering						
	Certificate	8	10	22	16	30
	First Degree	1404	1413	1429	1338	1243
	Qualifying	11	20	9	15	0
Engineering Total		1423	1443	1460	1369	1273

(table continued on next page)

Section 2 – Total Enrolment Trends for UG and PG Students 2012/2013 – 2016/2017

Table 2.4: Total Enrolment by Student Level, Faculty and Degree Type 2012/2013 – 2016/2017						
Student Level and Faculty	Degree	2012	2013	2014	2015	2016
Food & Agriculture						
	Certificate	20	8	0	0	0
	Diploma	12	15	14	21	22
	First Degree	943	935	868	870	814
	Qualifying	8	7	6	7	0
Food & Agriculture Total		983	965	888	898	836
Humanities & Education						
	Certificate	272	255	226	245	209
	Diploma	35	29	10	7	0
	First Degree	1614	1543	1419	1316	1259
	Qualifying	2	7	0	1	0
Humanities & Education Total		1923	1834	1655	1569	1468
Law						
	First Degree	325	303	299	325	340
Law Total		325	303	299	325	340
Medical Sciences						
	First Degree	2066	2207	2280	2321	2311
	Qualifying	3	1	2	0	0
	Diploma	0	0	0	0	27
Medical Sciences Total		2069	2208	2282	2321	2338
Science & Technology						
	First Degree	2317	2183	2011	2063	2149
	Qualifying	12	12	15	17	0
Science & Technology Total		2329	2195	2026	2080	2149
Social Sciences						
	Certificate	209	226	244	242	214
	Diploma	33	31	33	20	15
	First Degree	3664	3773	3485	3207	3075
	Qualifying	18	18	20	17	0
Social Sciences Total		3924	4048	3782	3486	3304
Undergraduate Total		12976	12996	12392	12048	11708
Grand Total		19128	19225	18389	17969	17628

Section 2 – Total Enrolment Trends for UG and PG Students 2012/2013 – 2016/2017

Table 2.5: New Student Admissions by Student Level and Faculty 2012/2013 – 2016/2017						
Student Level	Faculty	2012	2013	2014	2015	2016
Graduate						
	Engineering	299	261	248	300	258
	Food & Agriculture	57	79	46	53	58
	Humanities & Education	474	415	421	441	363
	Law	0	0	3	19	42
	Medical Sciences	181	159	145	223	203
	Science & Technology	137	159	127	125	174
	Social Sciences	887	699	617	680	756
Graduate Total		2035	1772	1607	1841	1854
Undergraduate						
	Engineering	398	425	403	372	374
	Food & Agriculture	236	237	246	248	208
	Humanities & Education	521	563	557	504	444
	Law	166	145	118	117	140
	Medical Sciences	541	583	546	550	487
	Science & Technology	613	575	553	688	673
	Social Sciences	1214	1346	1098	1064	1027
Undergraduate Total		3689	3874	3521	3543	3353
Grand Total		5724	5646	5128	5384	5207

Section 2 – Other Students

Student Level	2012	2013	2014	2015	2016
Undeclared	345	383	526	578	150
Undergraduate	243	123	137	190	93
Grand Total	588	506	663	768	243

Student Level	Faculty	Programme	2012	2013	2014	2015	2016
Undeclared							
	Engineering	Undeclared- Faculty of Engineering	7	2	16	9	7
	Engineering Total		7	2	16	9	7
	Food & Agriculture	Undeclared- Faculty of Food & Agriculture	14	13	9	8	7
	Food & Agriculture Total		14	13	9	8	7
	Humanities & Education	Undeclared- Faculty of Humanities & Education	29	64	45	44	36
	Humanities & Education Total		29	64	45	44	36
	Law	Undeclared- Faculty of Law	5	13	5	9	2
	Law Total		5	13	5	9	2
	Medical Sciences	Pre-Health - SOCS	11	22	23	18	18
		Undeclared- Faculty of Med Sciences	1	0	0	1	0
	Medical Sciences Total		12	22	23	19	18
	Science & Agriculture	Pre-Science - N1 - SOCS	0	1	0	1	0
		Undeclared- Faculty of Science & Agriculture	0	0	0	0	0
	Science & Agriculture Total		0	1	0	1	
	Science & Technology	Pre-Science - N1	161	185	316	390	0
		Undeclared- Faculty of Science & Technology	55	32	30	39	24
	Science & Technology Total		216	217	346	429	24
	Social Sciences	Undeclared- Faculty of Social Sciences	62	51	82	59	56
	Social Sciences Total		62	51	82	59	56
Undeclared Total			345	383	526	578	150
Undergraduate							
	Engineering	Summer- Faculty of Engineering	0	0	0	0	11
	No College Designated	Summer Programme- All Faculties	243	123	137	190	81
	No College Designated Total		243	123	137	190	81
	Social Sciences	Summer- Faculty of Social Sciences	0	0	0	0	1
Undergraduate Total			243	123	137	190	93
Grand Total			588	506	663	768	243

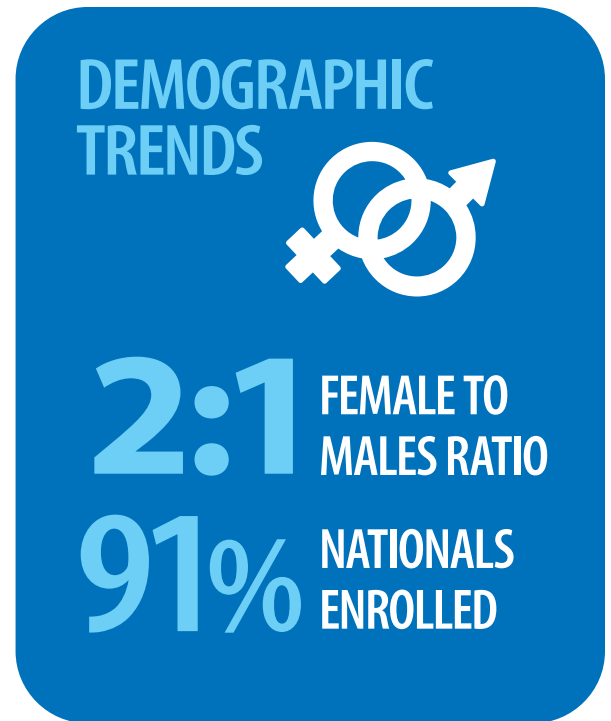
Section 3 – Student Demographic Trends for UG and PG Students 2012/2013 – 2017/2018

In terms of the overall trends in enrolment, for the period 2012/2013 to 2017/2018, the following were noted:

- Females outnumbered males at all levels of enrolment at The UWI St. Augustine Campus. The trends suggest that for the groups examined, there were on average 2 females to 1 male. This sex ratio did not experience any significant change over the period examined.
- The undergraduate student population was quite youthful, as it was mainly comprised of persons under the age of 24 years with the majority of the postgraduate population being between 25 and 34 years.
- Trinidad and Tobago nationals comprised an annual average of 91% of the student enrolment. On average those students whose nationalities were from the contributing countries represented 97% while those from non-contributing countries were only 3%.

For the purpose of **Table 3.1** below, the figure for Total Enrolment, situated at the top of the table comprises of both Pre-University students and Other Students. All other tables in this section will show analysis for the Undergraduate and Post Graduate student populations only.

Table 3.1: Student Demographics Snapshot 2016/2017 versus 2017/2018		
	2016	Semester 1 of 2017
Total Enrollment	18303	16125
By Sex		
Male	6749	5990
Female	11551	10130
Not Identifiable	3	5
By Age Group		
0-24	9264	9695
25-34	5615	4020
35-44	2151	1568
45-54	912	620
55+	361	222
By Home Region		
National	16610	14888
Regional	1123	982
International	305	231
Not Identifiable	13	24



Section 3 – Student Demographic Trends for UG and PG Students 2012/2013 – 2017/2018

Table 3.2: Total Enrolment by Student Level, Faculty and Sex 2012/2013 to 2016/2017						
Student Level and Faculty	Sex	2012	2013	2014	2015	2016
Graduate						
Engineering						
	F	567	552	507	510	498
	M	689	676	676	666	626
Engineering Total		1256	1228	1183	1176	1124
Food & Agriculture						
	F	119	145	137	134	135
	M	109	118	103	89	88
Food & Agriculture Total		228	263	240	223	223
Humanities & Education						
	F	772	803	750	738	711
	M	250	227	225	214	192
	Not Identifiable	0	0	0	1	0
Humanities & Education Total		1022	1030	975	953	903
Law						
	F	0	0	3	18	41
	M	0	0	0	5	13
Law Total		0	0	3	23	54
Medical Sciences						
	F	293	297	289	343	339
	M	185	204	192	198	203
Medical Sciences Total		478	501	481	541	542
Science & Agriculture						
	F	3	2	1	1	2
	M	3	2	2	0	0
Science & Agriculture Total		6	4	3	1	2
Science & Technology						
	F	279	290	275	280	317
	M	224	251	247	229	260
Science & Technology Total		503	541	522	509	577
Social Sciences						
	F	1755	1728	1689	1630	1651
	M	904	934	901	865	844
Social Sciences Total		2659	2662	2590	2495	2495
Graduate Total		6152	6229	5997	5921	5920

(table continued on next page)

Section 3 – Student Demographic Trends for UG and PG Students 2012/2013 – 2017/2018

Table 3.2: Total Enrolment by Student Level, Faculty and Sex 2012/2013 to 2016/2017						
Student Level and Faculty	Sex	2012	2013	2014	2015	2016
Undergraduate						
Engineering						
	F	445	439	443	400	375
	M	978	1004	1017	969	898
Engineering Total		1423	1443	1460	1369	1273
Food & Agriculture						
	F	644	622	574	585	548
	M	339	342	314	313	288
	Not Identifiable	0	1	0	0	0
Food & Agriculture Total		983	965	888	898	836
Humanities & Education						
	F	1502	1428	1292	1207	1134
	M	421	406	363	362	334
Humanities & Education Total		1923	1834	1655	1569	1468
Law						
	F	236	217	206	230	239
	M	89	86	93	95	101
Law Total		325	303	299	325	340
Medical Sciences						
	F	1427	1548	1608	1627	1639
	M	642	660	674	694	698
	Not Identifiable	0	0	0	0	1
Medical Sciences Total		2069	2208	2282	2321	2338
Science & Technology						
	F	1251	1184	1124	1134	1175
	M	1078	1010	902	946	974
	Not Identifiable	0	1	0	0	0
Science & Technology Total		2329	2195	2026	2080	2149
Social Sciences						
	F	2901	2893	2697	2490	2352
	M	1021	1151	1083	996	952
	Not Identifiable	2	4	2	0	0
Social Sciences Total		3924	4048	3782	3486	3304
Undergraduate Total		12976	12996	12392	12048	11708
Grand Total		19128	19225	18389	17969	17628

Section 3 – Student Demographic Trends for UG and PG Students 2012/2013 – 2017/2018

Table 3.3: Total Enrolment by Student Level, Sex and Age Group 2012/2013 – 2016/2017							
Student Level	Sex	Age Group	2012	2013	2014	2015	2016
Graduate							
	Female						
		0 - 24	431	386	319	311	217
		25 - 34	1998	2076	1996	1998	1995
		35 - 44	768	765	758	797	898
		45 - 54	443	446	437	410	418
		55+	148	144	141	138	166
	Female Total		3788	3817	3651	3654	3694
	Male						
		0 - 24	219	191	172	171	129
		25 - 34	1212	1258	1194	1165	1146
		35 - 44	518	548	585	559	579
		45 - 54	304	296	273	258	243
		55+	111	119	122	114	129
	Male Total		2364	2412	2346	2267	2226
Graduate Total			6152	6229	5997	5921	5920
Undergraduate							
	Female						
		0 - 24	5997	5974	5837	5680	5227
		25 - 34	1535	1519	1364	1292	1540
		35 - 44	536	512	481	466	472
		45 - 54	272	259	212	187	183
		55+	66	67	50	48	40
	Female Total		8406	8331	7944	7673	7462
	Male						
		0 - 24	3487	3594	3479	3479	3193
		25 - 34	741	770	692	634	803
		35 - 44	227	178	161	169	165
		45 - 54	81	79	75	64	62
		55+	32	38	39	29	22
	Male Total		4568	4659	4446	4375	4245
	Not Identifiable						
		0 - 24	1	2	2	0	0
		25 - 34	0	3	0	0	0
		35 - 44	1	0	0	0	1
		45 - 54	0	1	0	0	0
	Not Identifiable Total		2	6	2	0	1
Undergraduate Total			12976	12996	12392	12048	11708
Grand Total			19128	19225	18389	17969	17628

Section 3 – Student Demographic Trends for UG and PG Students 2012/2013 – 2017/2018

Table 3.4: Total Enrolment by Student Level and Country of Nationality for Contributing Countries 2012/2013 – 2016/2017					
Country of Nationality	2012	2013	2014	2015	2016
Graduate					
Not Identifiable	2	0	1	2	13
ANGUILLA	0	1	1	1	0
ANTIGUA AND BARBUDA	7	9	9	8	6
BARBADOS	34	44	38	38	44
BELIZE	13	17	8	13	13
BERMUDA	0	0	0	1	0
BRITISH VIRGIN ISLANDS	6	0	0	0	1
DOMINICA	12	16	13	15	14
GRENADA	16	20	20	17	18
JAMAICA	92	75	71	69	67
MONTSERRAT	2	0	0	0	0
ST KITTS AND NEVIS	3	6	3	1	1
ST LUCIA	42	45	39	44	41
ST VINCENT AND GRENADINES	26	34	29	35	41
THE BAHAMAS	6	5	8	7	7
TRINIDAD AND TOBAGO	5555	5635	5454	5377	5381
Graduate Total	5816	5907	5694	5628	5647
Undergraduate					
Not Identifiable	3	8	31	0	0
ANGUILLA	0	0	0	0	1
ANTIGUA AND BARBUDA	16	16	17	25	34
BARBADOS	176	187	180	157	134
BELIZE	18	24	15	14	13
BERMUDA	1	1	1	1	0
BRITISH VIRGIN ISLANDS	4	3	4	5	6
CAYMAN ISLANDS	1	1	1	1	1
DOMINICA	24	26	22	29	24
GRENADA	57	63	61	62	66
JAMAICA	117	129	128	106	101
MONTSERRAT	2	5	4	3	2
ST KITTS AND NEVIS	22	20	26	17	25
ST LUCIA	91	94	93	96	93
ST VINCENT AND GRENADINES	120	109	90	104	106
THE BAHAMAS	96	96	88	81	78
TRINIDAD AND TOBAGO	12013	11993	11474	11160	10819
TURKS AND CAICOS ISLANDS	2	2	2	3	3
Undergraduate Total	12763	12777	12237	11864	11506
Grand Total	18579	18684	17931	17492	17153

Section 3 – Student Demographic Trends for UG and PG Students 2012/2013 – 2017/2018

Table 3.5: Total Enrolment by Student Level and Country of Nationality by Non - Contributing Countries 2012/2013 – 2016/2017					
Country of Nationality	2012	2013	2014	2015	2016
Graduate					
Not Identifiable	2	0	1	2	0
ARGENTINA	1	1	0	0	0
AUSTRALIA	1	1	0	0	0
AUSTRIA	0	1	1	0	0
BANGLADESH	2	2	1	0	0
BELGIUM	0	1	0	0	0
BRAZIL	1	1	0	1	0
BULGARIA	0	0	0	0	1
CAMEROON	0	0	1	1	1
CANADA	7	10	10	11	7
CHINA	0	1	2	0	0
COLOMBIA	2	2	3	5	2
CUBA	0	1	1	1	1
DOMINICAN REPUBLIC	0	0	1	1	1
ECUADOR	0	0	0	0	2
EGYPT	0	0	0	0	1
FIJI	1	3	3	3	4
FINLAND	0	1	1	1	0
FRANCE	1	1	0	1	1
GERMANY	2	1	2	2	2
GHANA	1	2	5	3	3
GUATEMALA	0	0	0	0	5
GUYANA	170	166	140	140	119
HAITI	4	5	4	5	6
HONG KONG	0	0	0	0	0
INDIA	44	40	33	30	29
INDONESIA	0	1	1	1	0
JAPAN	1	1	1	1	1
NETHERLANDS	0	0	0	1	1
NIGERIA	32	24	22	15	12
PAPUA NEW GUINEA	0	0	0	2	3
REPUBLIC OF IRELAND (EIRE)	2	1	2	0	0
SAMOA (WESTERN SAMOA)	2	2	3	4	5
SOLOMON ISLANDS	1	2	3	9	9
SOUTH AFRICA	0	0	0	0	1
SPAIN	0	1	2	2	1
SRI LANKA	1	1	0	0	0

(table continued on next page)

Section 3 – Student Demographic Trends for UG and PG Students 2012/2013 – 2017/2018

Table 3.5: Total Enrolment by Student Level and Country of Nationality by Non - Contributing Countries 2012/2013 – 2016/2017					
Country of Nationality	2012	2013	2014	2015	2016
SURINAME	19	21	28	18	19
TAIWAN	0	0	0	0	1
TONGA	1	0	1	1	3
TUNISIA	2	2	1	2	1
TUVALU	1	0	1	0	0
UGANDA	1	0	0	0	0
UNITED KINGDOM	11	8	9	8	8
UNITED STATES OF AMERICA	18	14	16	16	15
VANUATU	1	1	1	2	2
VENEZUELA	5	3	4	5	4
YUGOSLAVIA	0	0	0	1	1
ZIMBABWE (FORMERLY RHODESIA)	1	0	0	0	1
Graduate Total	338	322	304	295	273
Undergraduate					
Not Identifiable	3	8	31	0	
BOTSWANA	44	37	16	7	3
BRAZIL	0	1	0	4	3
CAMEROON	1	1	0	0	0
CANADA	20	17	15	12	18
CHILE	0	0	0	0	0
CHINA	3	4	5	5	5
COLOMBIA	40	32	4	9	8
CUBA	0	0	0	1	1
CURACAO	1	1	1	0	0
ECUADOR	0	0	0	0	0
EL SALVADOR	0	0	0	0	0
FRANCE	0	0	0	0	1
GERMANY	1	1	0	0	0
GHANA	0	1	1	3	3
GUADELOUPE	0	0	0	2	2
GUINEA-BISSAU	0	0	0	1	0
GUYANA	21	27	28	32	41
HAITI	1	2	0	1	2
INDIA	11	14	19	17	17
JORDAN	0	0	1	0	0
KENYA	1	1	1	1	1
MARTINIQUE	0	3	0	1	0

(table continued on next page)

Section 3 – Student Demographic Trends for UG and PG Students 2012/2013 – 2017/2018


Table 3.5: Total Enrolment by Student Level and Country of Nationality by Non - Contributing Countries 2012/2013 – 2016/2017					
Country of Nationality	2012	2013	2014	2015	2016
MEXICO	1	0	0	1	2
NEW ZEALAND	0	0	0	1	1
NIGERIA	4	6	7	11	12
PHILIPPINES	0	2	2	1	1
REPUBLIC OF IRELAND (EIRE)	0	0	1	1	1
RUSSIA	0	0	1	1	1
SAUDI ARABIA	0	1	1	1	1
SIERRA LEONE	0	0	0	1	1
SOUTH KOREA	1	2	2	2	0
SPAIN	2	1	0	0	2
SRI LANKA	0	0	1	1	0
SURINAME	0	0	0	2	2
TANZANIA	1	1	1	1	1
TONGA	3	2	3	0	0
TUNISIA	0	0	1	0	0
TURKEY	0	0	0	1	1
UGANDA	1	1	0	0	2
UNITED KINGDOM	7	9	6	8	7
UNITED STATES OF AMERICA	35	35	27	34	28
VENEZUELA	11	15	9	21	33
VIETNAM	1	0	0	0	0
YUGOSLAVIA	1	1	1	0	0
ZIMBABWE (FORMERLY RHODESIA)	1	1	1	0	0
Undergraduate Total	216	227	186	184	201
Grand Total	554	549	490	479	463

Section 4 – Undergraduate and Postgraduate Faculty Trends

At the level of faculty, the following observations were made for undergraduate and postgraduate student enrolment:

- Enrolment levels at the undergraduate level were relatively constant in the faculties of Engineering, Food and Agriculture and Law where there was marginal increment.
- The faculty of Humanities and Education experienced decreasing enrolment at both the undergraduate and postgraduate levels.
- The faculty of Medical Sciences experienced increasing growth at both undergraduate and postgraduate levels while the Faculty of Social Sciences steadily had the highest proportion of enrolment at both the undergraduate and postgraduate levels of all faculties but experienced negative growth.

**UG & PG
FACULTY
TRENDS**



FACULTY OF SOCIAL SCIENCES
– HIGHEST PROPORTION OF ENROLMENT

FACULTY OF MEDICAL SCIENCES
– INCREASING GROWTH

Figure 4.1: Undergraduate Enrolment by Faculty 2012/2013 – 2016/2017

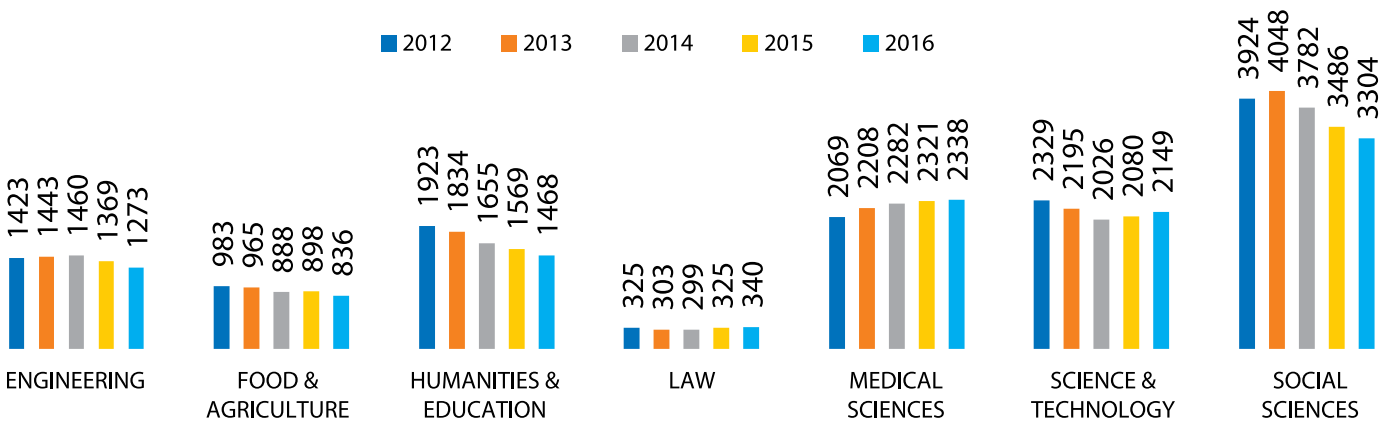
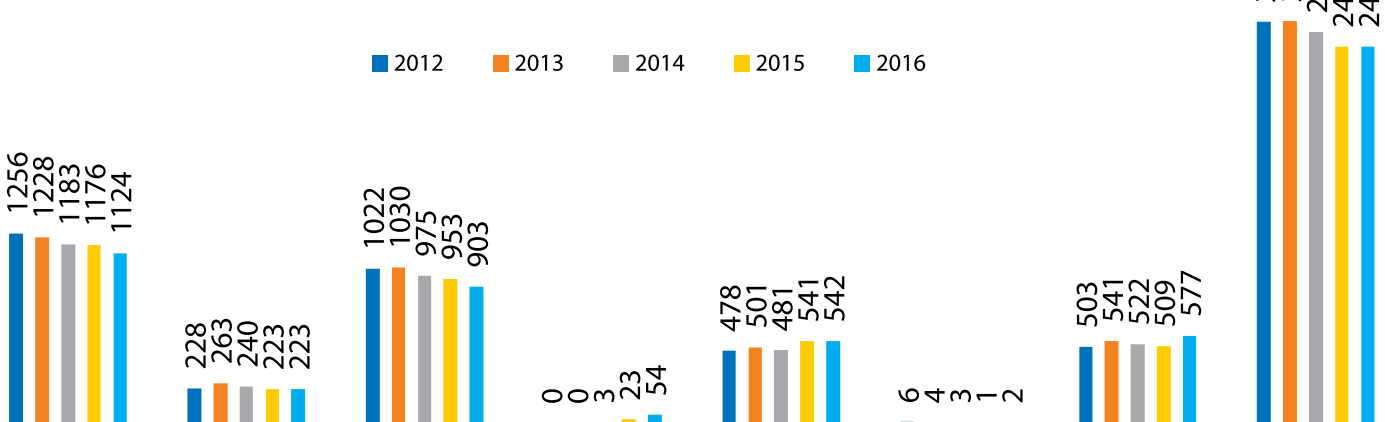


Figure 4.2: Postgraduate Enrolment by Faculty 2012/2013 – 2016/2017



Section 5 – Undergraduate First Year Retention Trends

Overall, undergraduate first year retention trends over the 2014/2017 period ranged from 77% to 79%. In 2017, the Faculty of Law exhibited the highest retention rate of 93% with the Faculty of Medical Sciences having a 90% retention, which represented a decline from its 2016 figure of 98%. The Faculty of Social Sciences had the lowest retention rate for 2017 of 78%, this however, indicated an increase from its previously recorded rates which ranged between 74% and 77%.

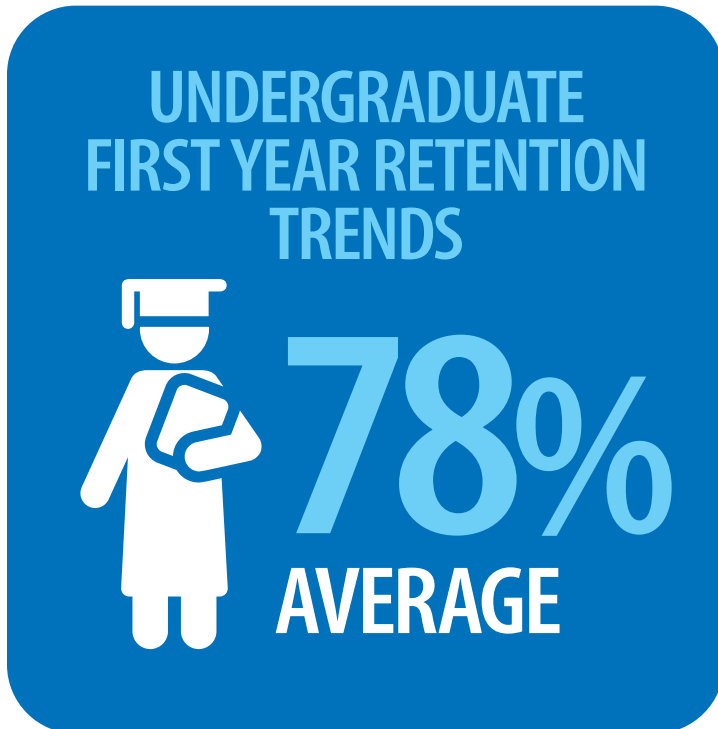


Table 5.1: First Year Retention Rates for Undergraduate Degree Seeking Students 2014 – 2017

Faculty	2014	2015	2016	2017
Engineering	90%	79%	80%	79%
Food & Agriculture	77%	82%	80%	80%
Humanities & Education	66%	73%	80%	80%
Law	92%	91%	83%	93%
Medical Sciences	96%	95%	98%	90%
Science & Technology	82%	82%	86%	82%
Social Sciences	77%	74%	76%	78%
Campus Total	79%	77%	77%	78%

Section 6 – Undergraduate and Postgraduate Graduation Trends

This section examines graduate output in respect of demographics, faculty and degree honours. Below are some overall trends that have been observed in relation to graduate output over the period 2012/2013 to 2016/2017:

- The average time to graduate ranged from 3.61-3.46 years over the period studied. Females typically took less time to graduate (3.45 years) than males (3.63 years)
- Graduate output spiked to 4610 students in the 2016/2017 academic year from previous years with undergraduates representing approximately 60% of the degrees awarded while postgraduates comprised of 40% of the graduating population.
- In terms of sex, females outnumbered males at both the Undergraduate and Postgraduate levels with the sex ratio remaining virtually unchanged at an approximate 2:1 female to male graduate output ratio over the period examined.
- When comparing the award of degrees by faculty, it was noted that the Faculty of Social Sciences earned the highest number of undergraduate and graduate degrees awarded. The Faculty of Medical Sciences earned the second highest number of undergraduate degrees awarded while the Faculty of Humanities and Education earned the second highest number of graduate degrees awarded.
- The MBBS Medicine and Surgery continued to be the top programme with the highest number of first degrees followed by the BSc Management Studies. The MBA Business Administration was predominantly the top Taught Masters programme.



Table 6.1: Average time to graduation for Undergraduate Full-Time Degree Seeking Students by Sex and Faculty 2012/2013 – 2016/2017

Sex by Faculty	2012	2013	2014	2015	2016	Overall Average
Female	3.40	3.41	3.47	3.46	3.54	3.45
Engineering	3.40	3.55	3.37	3.51	3.20	3.40
Food & Agriculture	3.06	3.30	3.28	3.30	3.42	3.28
Humanities & Education	3.22	3.09	3.40	3.26	3.27	3.24
Law	2.74	2.68	2.90	2.92	2.78	2.80
Medical Sciences	3.86	3.94	3.90	3.88	4.31	3.96
Science & Agriculture	-	3.80	4.20	4.80	-	4.27
Science & Technology	3.56	3.57	3.59	3.56	3.69	3.59
Social Sciences	3.22	3.23	3.21	3.23	3.29	3.23
Male	3.57	3.60	3.67	3.58	3.75	3.63
Engineering	3.36	3.59	3.55	3.44	3.46	3.48
Food & Agriculture	3.50	3.31	3.65	3.45	3.80	3.54
Humanities & Education	3.75	3.40	3.58	3.43	3.71	3.56
Law	2.37	2.66	3.31	2.80	3.00	2.82
Medical Sciences	3.92	4.20	3.78	3.88	4.98	4.08
Science & Agriculture	3.90	-	-	4.90	-	4.40
Science & Technology	3.67	3.63	4.05	3.79	3.76	3.76
Social Sciences	3.40	3.28	3.39	3.38	3.31	3.35
Not Identifiable	-	-	2.80	-	-	2.80
Social Sciences	-	-	2.80	-	-	2.80
Overall Average	3.46	3.47	3.53	3.50	3.61	3.51

Section 6 – Undergraduate and Postgraduate Graduation Trends

Table 6.2: Snapshot of the Graduating Class of 2017 by Faculty, Degree Level, Sex and Age Group	
	Class of 2017
By Faculty	
Engineering	609
Food & Agriculture	251
Humanities & Education	786
Law	101
Medical Sciences	662
Science & Technology	529
Social Sciences	1664
Total	4610
By Programme Level	
UG Certificate	210
UG Diploma	30
PG Certificate	26
PG Diploma	345
First Degree	2459
Master of Philosophy	31
Taught Masters	1423
Doctorate	55
Doctor of Medicine	31
By Gender	
Male	1496
Female	3114
Total	4610
By Age Group	
0-24	1634
25-34	1822
35-44	733
45-54	319
55+	102
Total	4610

Section 6 – Undergraduate and Postgraduate Graduation Trends

Table 6.3: Top 5 Degrees with highest number of awardees by Degree Type for 2012/2013 – 2016/2017			
2012		2013	
First Degree		First Degree	
BSc Biology	113	BSc Biology	112
BSc Economics	97	BSc Economics	105
BSc Environmental and Natural Resource Management	144	BSc Environmental and Natural Resource Management	147
BSc Management Studies	126	BSc Management Studies	165
MBBS Medicine and Surgery	153	MBBS Medicine and Surgery	182
Total	722	Total	813
Taught Masters		Taught Masters	
MBA Business Administration	83	MBA Business Administration	91
MED Education	42	MED Education	66
MHRM Human Resource Management	39	MM Marketing	37
MM Marketing	36	MSc Project Management	56
MSc Strategic Leadership and Management	38	MSME Small & Medium Enterprise Management	45
Total	238	Total	295
Master of Philosophy		Master of Philosophy	
MPhil Chemistry	2	MPhil Computer Science	2
MPhil Education	4	MPhil Criminology and Criminal Justice	2
MPhil Environmental Biology	3	MPhil Cultural Studies	6
MPhil Physics	2	MPhil Education	3
MPhil Sociology	3	MPhil Geography	2
Total	14	Total	15
Doctorate		Doctorate	
PhD Business Administration	2	PhD Business Administration	1
PhD Chemical Engineering	2	PhD Chemistry	4
PhD Chemistry	2	PhD Criminology and Criminal Justice	1
PhD Cultural Studies	2	PhD History	2
PhD Education	2	PhD Linguistics	2
Total	10	Total	10

Section 6 – Undergraduate and Postgraduate Graduation Trends

Table 6.3: Top 5 Degrees with highest number of awardees by Degree Type for 2012/2013 – 2016/2017					
2014		2015		2016	
First Degree		First Degree		First Degree	
BSc Biology	115	BSc Biology	124	BSc Management Studies	133
BSc Economics	100	BSc Mechanical Engineering	104	BSc Nursing	115
BSc Management Studies	145	BSc Management Studies	138	BSc Psychology	100
BSc Psychology	87	BSc Psychology	98	LLB Law	86
MBBS Medicine and Surgery	155	MBBS Medicine and Surgery	176	MBBS Medicine & Surgery	181
Total	751	Total	807	Total	615
Taught Masters		Taught Masters		Taught Masters	
MBA Business Administration	31	MBA Business Administration	146	MBA Business Administration	134
MED Education	90	MHRM Human Resource Management	38	MED Education	72
MSc Biodiversity, Conservation & Sustainable Development-Caribbean	31	EMBA Business Administration	66	MSc Occupational & Environmental Safety & Health	75
MSc Occupational & Environmental Safety & Health	34	MSc Project Management	58	MSc Project Management	93
MSc Project Management	50	MSc Strategic Leadership & Management	39	MSc Strategic Leadership & Management	84
Total	236	Total	347	Total	458
Master of Philosophy		Master of Philosophy		Master of Philosophy	
MPhil Agricultural Economics	2	MPhil Agricultural Economics	1	MPhil Chemistry	4
MPhil Chemistry	3	MPhil History	2	MPhil Cultural Studies	6
MPhil Economic Development Policy	2	MPhil Cultural Studies	6	MPhil Education	2
MPhil Education	2	MPhil Education	2	MPhil Medical Microbiology	2
MPhil Physics	3	MPhil Geography	2	MPhil Physics	3
Total	12	Total	13	Total	17
Doctorate		Doctorate		Doctorate	
DBA Business Administration	1	DBA Business Administration	3	DBA Business Administration	4
PhD Economic Development Policy	3	PhD Education	3	PhD Business Administration	4
PhD Economics	3	PhD Criminology and Criminal Justice	2	PhD Chemistry	4
PhD Linguistics	3	PhD Physics	6	PhD Cultural Studies	3
PhD Sociology	3	PhD Sociology	4	PhD Education	8
Total	13	Total	18	Total	23

Section 6 – Undergraduate and Postgraduate Graduation Trends

Table 6.4: Graduate Output for Undergraduate and Postgraduate Students by Student Level and Faculty 2012/2013 – 2016/2017						
Student Level	Faculty	2012	2013	2014	2015	2016
Graduate						
	Engineering	183	184	173	199	294
	Food & Agriculture	19	24	35	39	42
	Humanities & Education	341	370	400	337	407
	Law	0	0	0	6	15
	Medical Sciences	107	124	87	112	125
	Science & Agriculture	14	1	5	3	0
	Science & Technology	62	80	90	71	152
	Social Sciences	512	457	356	704	876
Graduate Total		1238	1240	1146	1471	1911
Undergraduate						
	Engineering	315	286	317	354	315
	Food & Agriculture	193	230	170	196	209
	Humanities & Education	471	513	397	384	379
	Law	70	88	62	90	86
	Medical Sciences	546	567	609	396	537
	Science & Agriculture	2	1	2	3	0
	Science & Technology	533	455	377	379	377
	Social Sciences	860	936	867	856	796
Undergraduate Total		2990	3076	2801	2658	2699
Grand Total		4228	4316	3947	4129	4610

Table 6.5: Graduate Output for Undergraduate and Postgraduate Students by Student Level and Sex 2012/2013 – 2016/2017						
Student Level	Sex	2012	2013	2014	2015	2016
Graduate						
	Female	843	854	766	959	1263
	Male	395	386	380	512	648
Graduate Total		1238	1240	1146	1471	1911
Undergraduate						
	Female	2020	2058	1922	1803	1851
	Male	969	1018	878	855	848
	Not Identifiable	1	0	1	0	0
Undergraduate Total		2990	3076	2801	2658	2699
Grand Total		4228	4316	3947	4129	4610

Section 6 – Undergraduate and Postgraduate Graduation Trends

Table 6.6: Graduate Output of Undergraduates by Degree Type and Degree Honours 2012/2013 – 2016/2017							
Faculty	Degree	Degree Honour	2012	2013	2014	2015	2016
Undergraduate							
Engineering	Certificate	Pass	7	4	10	11	19
	First Degree	Not Identifiable	0	0	0	1	0
		First Class Honours	51	37	61	53	44
		Pass	46	43	36	38	45
		Second Class Honours (Lower)	119	121	114	142	113
		Second Class Honours (Upper)	82	67	87	96	85
		Third Class Honours	10	14	9	13	9
Engineering Total			315	286	317	354	315
Food & Agriculture	Certificate	Pass	5	2	0	0	0
	Diploma	Distinction	10	12	2	8	3
		Not Identifiable	0	0	0	0	2
		Pass	1	2	12	7	8
	First Degree	First Class Honours	16	17	10	7	14
		Pass	45	42	29	52	43
		Second Class Honours (Lower)	75	101	73	71	75
		Second Class Honours (Upper)	41	54	44	51	64
Food & Agriculture Total			193	230	170	196	209
Humanities & Education	Certificate	Distinction	5	2	0	0	0
		Pass	109	101	80	95	82
	Diploma	Pass	4	27	0	4	0
	First Degree	First Class Honours	32	55	45	35	37
		Pass	58	52	44	36	34
		Second Class Honours (Lower)	153	150	119	100	95
		Second Class Honours (Upper)	110	126	109	114	131
Humanities & Education Total			471	513	397	384	379
Law	First Degree	First Class Honours	9	9	6	6	5
		Pass	9	25	10	25	25
		Second Class Honours (Lower)	40	30	14	37	31
		Second Class Honours (Upper)	12	24	32	22	25
Law Total			70	88	62	90	86
	Diploma	Distinction	0	0	0	0	13

(table continued on next page)

Section 6 – Undergraduate and Postgraduate Graduation Trends

Table 6.6: Graduate Output of Undergraduates by Degree Type and Degree Honours 2012/2013 – 2016/2017							
Faculty	Degree	Degree Honour	2012	2013	2014	2015	2016
Medical Sciences	First Degree	Not Identifiable	4	0	0	1	0
		Distinction	5	7	26	37	38
		First Class Honours	33	34	32	13	19
		Honours	23	57	88	66	73
		Pass	371	400	356	143	201
		Second Class Honours (Lower)	56	21	34	65	60
		Second Class Honours (Upper)	54	48	73	71	133
Medical Sciences Total			546	567	609	396	537
Science & Agriculture	Certificate	Pass	0	0	0	0	0
		Diploma	0	0	0	0	0
	First Degree	Pass	0	0	0	0	0
		First Class Honours	0	0	0	0	0
		Pass	0	0	2	2	0
		Second Class Honours (Lower)	2	1	0	0	0
		Second Class Honours (Upper)	0	0	0	1	0
Science & Agriculture Total			2	1	2	3	0
Science & Technology	First Degree	Not Identifiable	1	0	0	0	2
		First Class Honours	30	30	33	34	46
		Pass	196	172	137	120	119
		Second Class Honours (Lower)	248	200	144	142	129
		Second Class Honours (Upper)	59	53	63	83	81
Science & Technology Total			533	455	377	379	377
Social Sciences	Certificate	Not Identifiable	1	0	0	0	0
		Pass	110	96	93	110	109
	Diploma	Distinction	1	0	0	0	0
		Honours	0	0	0	0	0
	First Degree	Pass	10	7	12	10	4
		Not Identifiable	1	2	0	1	0
		First Class Honours	54	77	86	49	59
		Pass	163	167	135	166	140
		Second Class Honours (Lower)	339	391	311	274	240
		Second Class Honours (Upper)	181	197	230	246	244
Social Sciences Total			860	936	867	856	796
Undergraduate Total			2990	3076	2801	2658	4610

Section 6 – Undergraduate and Postgraduate Graduation Trends

Table 6.7: Graduate Output of Postgraduates by Degree Type and Degree Honours 2012/2013 – 2016/2017							
Faculty	Degree	Degree Honour	2012	2013	2014	2015	2016
Graduate							
Engineering	Doctorate	High Commendation	1	1	1	1	0
		Pass	4	0	1	3	5
	Graduate Diploma	Not Identifiable	0	0	1	0	0
		Distinction	0	4	3	2	3
		Pass	26	25	8	13	11
	Master of Philosophy	Pass	0	5	2	1	2
	Taught Masters	Not Identifiable	0	0	1	0	0
		Distinction	32	41	34	31	58
		Pass	120	108	122	148	215
Engineering Total			183	184	173	199	294
Food & Agriculture	Doctorate	High Commendation	0	2	0	0	1
		Pass	0	0	2	2	0
	Graduate Diploma	Distinction	0	1	1	0	0
		Pass	1	1	4	4	1
	Master of Philosophy	Pass	6	6	4	3	2
	Taught Masters	Distinction	0	6	7	11	11
		Pass	12	8	17	19	27
Food & Agriculture Total			19	24	35	39	42
Humanities & Education	Doctorate	High Commendation	1	2	1	0	4
		Pass	6	4	5	2	11
	Graduate Certificate	Distinction	27	0	0	0	0
		Pass	16	19	20	26	22
	Graduate Diploma	Not Identifiable	0	1	0	0	0
		Distinction	34	51	34	37	81
		Pass	153	176	176	184	125
	Master of Philosophy	Pass	6	11	7	11	9
	Taught Masters	Not Identifiable	0	0	1	0	0
		Distinction	16	23	36	17	33
		High Commendation	1	0	2	1	0
		Pass	81	83	118	59	122
Humanities & Education Total			341	370	400	337	407
Law	Graduate Diploma	Pass	0	0	0	1	0
	Taught Masters	Distinction	0	0	0	1	0
		Pass	0	0	0	4	15
Law Total			0	0	0	6	15

(table continued on next page)

Section 6 – Undergraduate and Postgraduate Graduation Trends

Table 6.7: Graduate Output of Postgraduates by Degree Type and Degree Honours 2012/2013 – 2016/2017							
Faculty	Degree	Degree Honour	2012	2013	2014	2015	2016
Medical Sciences	Doctor of Medicine	Pass	14	21	30	19	31
	Doctorate	High Commendation	1	0	0	1	0
		Pass	1	1	1	1	1
	Graduate Diploma	Not Identifiable	1	0	0	0	0
		Distinction	5	4	7	4	5
		Pass	35	32	23	40	40
	Master of Philosophy	High Commendation	0	0	0	1	0
		Pass	0	1	1	0	4
	Taught Masters	Not Identifiable	0	0	1	1	0
		Distinction	10	15	5	9	11
		Pass	40	50	19	36	33
Medical Sciences Total			107	124	87	112	125
Science & Agriculture	Doctorate	High Commendation	0	0	0	1	0
		Pass	3	0	0	0	0
	Graduate Diploma	Distinction	0	0	0	0	0
		Pass	0	0	0	0	0
	Master of Philosophy	High Commendation	0	0	0	0	0
		Pass	2	0	0	0	0
	Taught Masters	Distinction	0	0	2	0	0
		Pass	9	1	3	2	0
Science & Agriculture Total			14	1	5	3	0
Science & Technology	Doctorate	Pass	2	5	2	8	8
		High commendation					3
	Graduate Diploma	Distinction	0	0	0	1	0
		Pass	0	1	1	0	1
	Master of Philosophy	High Commendation	0	1	0	0	0
		Pass	10	7	7	3	10
	Taught Masters	Distinction	21	22	29	23	49
		Pass	29	44	51	36	81
Science & Technology Total			62	80	90	71	152
Social Sciences	Doctorate	High Commendation	4	1	3	2	3
		Pass	4	6	9	13	19
	Graduate Certificate	Pass	0	3	1	6	4
	Graduate Diploma	Not Identifiable	0	1	1	0	0
		Distinction	21	7	7	11	8
		Pass	42	23	36	36	70
	Master of Philosophy	Pass	3	8	5	2	4
	Taught Masters	Not Identifiable	1	0	2	1	2
		Distinction	115	156	102	212	264
		Pass	322	252	190	421	502
Social Sciences Total			512	457	356	704	876
Graduate Total			1238	1240	1146	1471	1911

Section 7 – 2015/2016 Graduate Tracer Survey Highlights

The charts below represent an excerpt from the Graduate Tracer Survey (GTS) 2015/2016. The GTS is a study led by the Campus Office of Planning and Institutional Research on an annual basis. The study is geared towards assessing employment outcomes of first degree graduates from the St. Augustine campus and to garner feedback on their experience in the workplace and their degree obtained. The survey was responded by 29.7% of graduates from the undergraduate class of 2015.

The survey findings from the 2015 graduating cohort indicate that graduate employment was 75% with an additional 4% running their own businesses. The vast majority of graduates (60%) over that time period were employed in the public sector in the fields of Financial and Insurance activities, Education or Healthcare and Social Services. Fifty-three percent (53%) of respondents earned a monthly salary less than \$7000 with average time taken to find employment declining steadily over the years and was reflected at 4 months in 2015.

Figure 7.1: Graduates' Employment Status

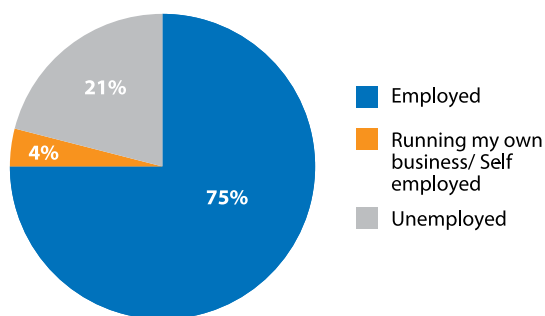


Figure 7.2: Graduates' Sector of Employment

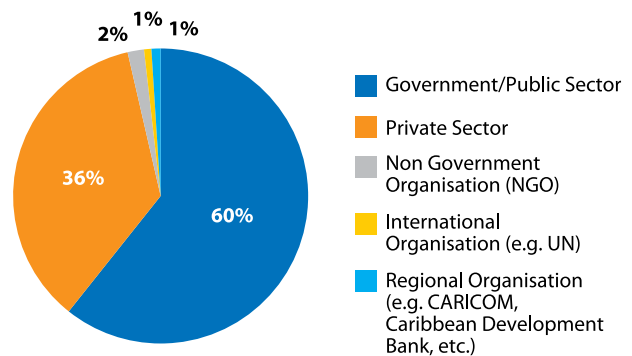


Figure 7.3: Reasons for Graduates' Unemployment

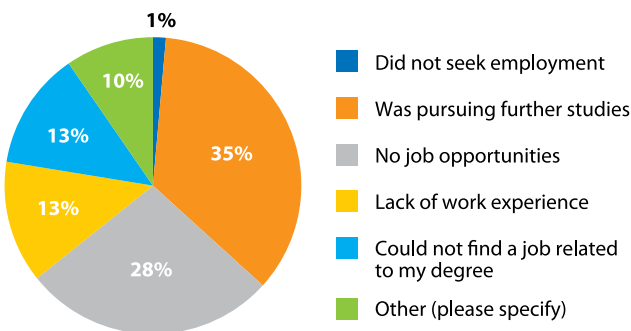


Figure 7.4: Major Areas of Economic Activity of Graduates

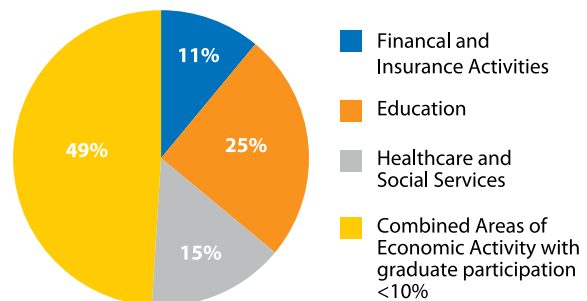
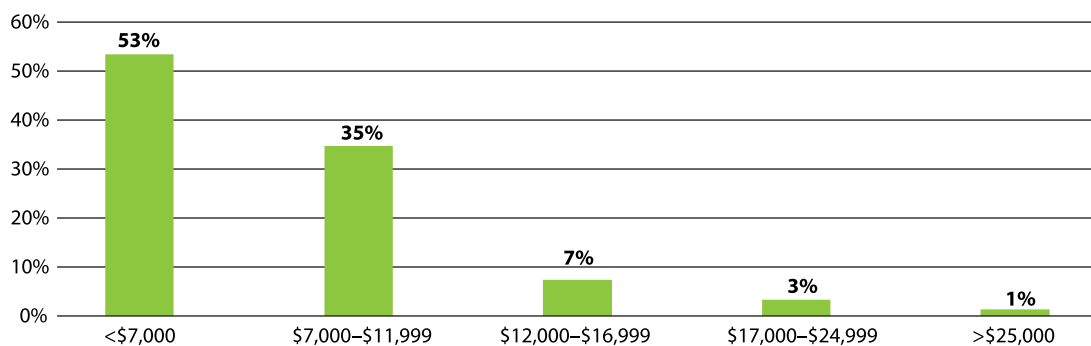


Figure 7.5: Graduates' Gross Monthly Salary (currency in \$TT)



Section 8 – Appendices

Appendix 1: Enrolment by Programme and Degree Type 2016/2017	
Programme	2016
Graduate	5920
Engineering	1124
Doctorate	57
PHD Chemical Engineering	3
PHD Civil Engineering	8
PHD Construction Management	1
PHD Electrical & Computer Engineering	6
PHD Food Science & Technology Engineering	4
PHD Geoinformatics	12
PHD Geoscience	4
PHD Industrial Engineering	2
PHD Manufacturing Engineering	1
PHD Mechanical Engineering	6
PHD Project Management	2
PHD Surveying & Land Information	5
PHD Urban & Regional Planning	3
Graduate Diploma	22
DIPG Construction Engineering & Management	1
DIPG Construction Management	2
DIPG Electrical & Computer Engineering	3
DIPG Geoinformatics	1
DIPG Petroleum Engineering & Management	10
DIPG Petroleum Engineering	3
DIPG Water & Wastewater Services Management	2
Master of Philosophy	47
MPHIL Chemical Engineering	2
MPHIL Civil Engineering	7
MPHIL Electrical & Computer Engineering	8
MPHIL Food Science & Technology Engineering	3
MPHIL Geoinformatics	2
MPHIL Geoscience	6
MPHIL Industrial Engineering	3
MPHIL Manufacturing Engineering	2
MPHIL Mechanical Engineering	4
MPHIL Petroleum Engineering	3

Section 8 – Appendices

Appendix 1: Enrolment by Programme and Degree Type 2016/2017	
Programme	2016
MPHIL Petroleum Geoscience	1
MPHIL Project Management	2
MPHIL Surveying & Land Information	3
MPHIL Urban & Regional Planning	1
Qualifying	2
000000 Undeclared	2
Taught Masters	996
MASC Electrical & Computer Engineering	58
MSC Business Administration	1
MSC Chemical & Process Engineering with Environmental Engineering	3
MSC Chemical & Process Engineering with Management	31
MSC Chemical & Process Engineering	9
MSC Civil Engineering	33
MSC Civil with Environmental Engineering	10
MSC Coastal Engineering & Management	7
MSC Coastal Zone Engineering & Management	19
MSC Construction Management	96
MSC Engineering Asset Management	63
MSC Engineering Management	47
MSC Environmental Engineering	26
MSC Food Science & Technology Engineering	55
MSC Geoinformatics	70
MSC Geoinformatics - Research	1
MSC Manufacturing Engineering & Management	18
MSC Petroleum Engineering	77
MSC Production Engineering & Management	23
MSC Production Management	44
MSC Project Management	236
MSC Reservoir Engineering	27
MSC Urban & Regional Planning	31
MSC Water & Wastewater Services Management	11

Section 8 – Appendices

Appendix 1: Enrolment by Programme and Degree Type 2016/2017	
Programme	2016
Food & Agriculture	223
Doctorate	44
PHD Agri-Food Safety & Quality Assurance	3
PHD Agricultural Economics	8
PHD Agricultural Extension	7
PHD Crop Protection	1
PHD Crop Science	8
PHD Geography	3
PHD Human Ecology	5
PHD Livestock Science	7
PHD Soil Science	1
PHD Tropical Earth & Environmental Science	1
Graduate Diploma	1
DIPG Agri-Food Safety & Quality Assurance	1
Master of Philosophy	50
MPHIL Agri-Food Safety & Quality Assurance	1
MPHIL Agricultural Economics	3
MPHIL Agricultural Extension	8
MPHIL Crop Science	10
MPHIL Geography	8
MPHIL Horticulture	2
MPHIL Human Ecology	5
MPHIL Livestock Science	5
MPHIL Soil Science	5
MPHIL Tropical Crop Protection	2
MPHIL Tropical Earth & Environmental Science	1
Qualifying	6
000000 Undeclared	6
Taught Masters	122
MSC Agri-Food Safety & Quality Assurance	58
MSC Agricultural Economics	12
MSC Crop Protection	5
MSC Marketing and Agribusiness	13
MSC Tropical Animal Science & Production	29
MSC Tropical Crop Protection	5

Section 8 – Appendices

Appendix 1: Enrolment by Programme and Degree Type 2016/2017	
Programme	2016
Gender & Development Studies	42
Doctorate	9
PHD Interdisciplinary Gender Studies	9
Graduate Diploma	4
DIPG Gender & Development Studies	4
Master of Philosophy	7
MPHIL Interdisciplinary Gender Studies	7
Taught Masters	22
MSC Gender & Development Studies	22
Humanities & Education	903
Doctorate	106
PHD Cultural Studies	13
PHD Education	60
PHD French	1
PHD History	5
PHD Human Communication Studies	1
PHD Linguistics	7
PHD Literatures in English	18
PHD Spanish	1
Graduate Certificate	25
CERT University Teaching & Learning	25
Graduate Diploma	232
DIPG Education	212
DIPG Interpreting Techniques	6
DIPG TESOL	14
Master of Philosophy	114
MPHIL Cultural Studies	23
MPHIL Education	57
MPHIL French	4
MPHIL History	13
MPHIL Linguistics	11
MPHIL Literatures in English	6
Qualifying	5
000000 Undeclared	5

Section 8 – Appendices

Appendix 1: Enrolment by Programme and Degree Type 2016/2017	
Programme	2016
Taught Masters	421
MA Creative Design & Entrepreneurship	13
MA Cultural Studies	32
MA English Language	2
MA English Language: TESOL	1
MA History	16
MA Human Communication Studies	22
MA Leadership Technical & Vocational Education & Training	24
MA Literatures in English	21
MA Spanish	20
MED Education	152
MED Educational Leadership	22
MED Health Promotion	25
MED Inclusive & Special Education	43
MFA Creative Writing	24
MHED Tertiary Level Teaching & Learning	4
Law	54
Doctorate	1
PHD Law	1
Taught Masters	53
LLM Law	53
Medical Sciences	542
Doctor of Medicine	268
DM Anaesthesia and Intensive Care	34
DM Emergency Medicine	40
DM Family Medicine	4
DM General Internal Medicine	11
DM Obstetrics & Gynaecology	19
DM Ophthalmology	1
DM Orthopaedics	15
DM Otorhinolaryngology DM	19
DM Paediatrics	31
DM Psychiatry	16
DM Radiology	25
DM Surgery	42
DM Urology	11

Section 8 – Appendices

Appendix 1: Enrolment by Programme and Degree Type 2016/2017	
Programme	2016
Doctorate	16
PHD Biochemistry (Medical Sciences)	2
PHD Community Health	2
PHD Microbiology (Med Sciences)	1
PHD Molecular Genetics	5
PHD Pathology	1
PHD Pharmacology	1
PHD Veterinary Medicine	1
PHD Veterinary Microbiology	2
PHD Veterinary Parasitology	1
Graduate Diploma	99
DIPG Emergency Medicine	49
DIPG Family Medicine	31
DIPG Management of HIV Infection	19
Master of Philosophy	26
MPHIL Biochemistry (Medical Sciences)	3
MPHIL Community Health	1
MPHIL Human Physiology	2
MPHIL Medical Microbiology	5
MPHIL Pathology	1
MPHIL Pharmacology	4
MPHIL Veterinary Anatomy	1
MPHIL Veterinary Microbiology	3
MPHIL Veterinary Parasitology	2
MPHIL Veterinary Pathology	2
MPHIL Veterinary Public Health	2
Taught Masters	133
MPH Public Health	37
MSC Clinical Psychology	34
MSC Family Medicine	5
MSC Medical Microbiology	28
MSC Nursing	29
Science & Agriculture	2
Taught Masters	2
MSC Crop Protection	1
MSC Tropical Animal Science & Production	1

Section 8 – Appendices

Appendix 1: Enrolment by Programme and Degree Type 2016/2017	
Programme	2016
Science & Technology	569
Doctorate	75
PHD Biochemistry and Science	1
PHD Chemistry (FST)	14
PHD Computer Science	14
PHD Environmental Biology	10
PHD Mathematics	9
PHD Microbiology (FST)	2
PHD Physics	6
PHD Plant Science	7
PHD Statistics	10
PHD Zoology	2
Graduate Diploma	1
DIPG Biodiversity Conservation and Sustainable Development in the Caribbean	1
Master of Philosophy	83
MPHIL Biochemistry (FST)	2
MPHIL Chemistry (FST)	34
MPHIL Computer Science	7
MPHIL Environmental Biology	7
MPHIL Mathematics	3
MPHIL Microbiology (FST)	6
MPHIL Physics	12
MPHIL Plant Science	9
MPHIL Statistics	1
MPHIL Zoology	2
Qualifying	12
000000 Undeclared	12
Taught Masters	398
MSC Biodiversity Conservation and Sustainable Development in the Caribbean	47
MSC Biomedical Physics	12
MSC Biotechnology	14
MSC Computer Science	23
MSC Computer Science & Technology	26
MSC Mathematics	26
MSC Occupational & Environmental Safety & Health	164
MSC Renewable Energy Technology	55
MSC Statistics	31

Section 8 – Appendices

Appendix 1: Enrolment by Programme and Degree Type 2016/2017	
Programme	2016
Social Sciences	2453
Doctorate	242
DBA Business Administration	91
PHD Business Administration	24
PHD Criminology & Criminal Justice	16
PHD Economic Development Policy	9
PHD Economics	19
PHD Governance	6
PHD Government	7
PHD International Relations	21
PHD Psychology	8
PHD Social Policy	13
PHD Social Work	5
PHD Sociology	23
Graduate Certificate	28
CERT Authentic Business Education	28
Graduate Diploma	134
DIPG Information Systems & Technology Management	4
DIPG Institutional Innovation & Effectiveness	5
DIPG International Master of Business Development	4
DIPG International Relations	36
DIPG International Trade Logistics & Procurement	5
DIPG Mediation Studies	44
DIPG Small & Medium Enterprise Management	5
DIPG Sports Management	23
DIPG Strategic Marketing	3
DIPG Tourism Development & Management	5
Master of Philosophy	80
MPHIL Criminology & Criminal Justice	11
MPHIL Economic Development Policy	5
MPHIL Economics	9
MPHIL Governance	1
MPHIL Government	10
MPHIL International Relations	20
MPHIL Psychology	3
MPHIL Social Work	1
MPHIL Sociology	20

Section 8 – Appendices

Appendix 1: Enrolment by Programme and Degree Type 2016/2017	
Programme	2016
Qualifying	26
000000 Undeclared	26
Taught Masters	1943
EMBA Business Administration	173
IMA Strategic Marketing	79
IMBDI International Master of Business Development	39
MBA Business Administration	296
MBA International Trade Logistics & Procurement	51
MBA Sustainable Energy Management	72
MHRM Human Resource Management	80
MM Marketing	13
MPM Port and Maritime Management	16
MSC Applied Psychology	25
MSC Aviation Management	29
MSC Criminology & Criminal Justice	100
MSC Development Statistics	37
MSC Economics	45
MSC Financial Economics	13
MSC Global Studies	87
MSC Government	13
MSC Information Systems & Technology Management	43
MSC Institutional Innovation & Effectiveness	22
MSC International Finance	46
MSC Management Studies	43
MSC Mediation Studies	51
MSC Port and Maritime Management	11
MSC Public Sector Management	93
MSC Sociology	52
MSC Sports Management	13
MSC Strategic Leadership & Management	251
MSC Tourism Development & Management	36
MSME Small & Medium Enterprise Management	43
MSW Social Work	71
The UWI Seismic Research Centre	8
Doctorate	2
PHD Volcanology	2
Master of Philosophy	6
MPHIL Seismology	3
MPHIL Volcanology	3

Section 8 – Appendices

Appendix 1: Enrolment by Programme and Degree Type 2016/2017	
Programme	2016
Undergraduate	11708
Engineering	1273
Certificate	30
CERT Geo & Land Information Systems	30
First Degree	1243
BSC Geomatics	121
BSC Land Management	30
BSC Petroleum Geoscience	44
BSC Chemical & Process Engineering	155
BSC Civil Engineering	134
BSC Civil with Environmental Engineering	53
BSC Electrical & Computer Engineering	294
BSC Industrial Engineering	39
BSC Mechanical Engineering with Biosystems	30
BSC Mechanical Engineering	343
Food & Agriculture	836
Diploma	22
DIP Agriculture	9
DIP Institutional & Community Dietetics & Nutrition	13
First Degree	814
BSC Agribusiness	54
BSC Agribusiness Management	38
BSC Agricultural Science	4
BSC Agricultural Technology	21
BSC Agriculture (Special)	90
BSC Entrepreneurship	4
BSC Environmental & Natural Resource Management	140
BSC Family and Consumer Sciences	6
BSC Foods and Food Service Systems Management	12
BSC General	83
BSC General Agriculture	15
BSC Geography	111
BSC Geography (Special)	2
BSC Human Ecology	48
BSC Human Nutrition & Dietetics	155
BSC Nutritional Sciences	24
BSC Tropical Landscaping	7

Section 8 – Appendices

Appendix 1: Enrolment by Programme and Degree Type 2016/2017	
Programme	2016
Humanities & Education	1468
Certificate	209
000000 English as a Foreign Language	51
CERT Art & Science of Coaching	14
CERT Dance & Dance Education	20
CERT Drama/Theatre in Education	16
CERT Early Childhood Care & Development	22
CERT Music	46
CERT Technical Theatre Production	12
CERT Visual Arts	28
First Degree	1259
BA Carnival Studies	10
BA Communication Studies	204
BA Dance	39
BA Language & Literature with Education	98
BA Film	39
BA Film Production	14
BA Film Studies	4
BA French	32
BA Geography	12
BA History	47
BA History (Special)	1
BA Latin American Studies	6
BA Linguistics	56
BA Literatures in English	136
BA Mathematics	5
BA Musical Arts (Special)	74
BA Spanish	99
BA Theatre Arts	73
BA Theology	25
BA Visual Arts (Special)	109
BED Early Childhood Care Education	113
BED Primary (General)	58
BED Primary Education	5
Law	340
First Degree	340
LLB Law	340

Section 8 – Appendices

Appendix 1: Enrolment by Programme and Degree Type 2016/2017	
Programme	2016
Medical Sciences	2338
Diploma	27
DIP Nursing	12
DIP Paed Haematology Oncology Nursing	15
First Degree	2311
BSC Dental Hygiene & Dental Therapy	49
BSC Nursing	303
BSC Optometry	92
BSC Pharmacy	235
DDS Dental Surgery	171
DVM Veterinary Medicine	167
MBBS Medicine & Surgery	1294
Science & Technology	2149
First Degree	2149
BSC Actuarial Science (Special)	122
BSC Biochemistry (FST)	121
BSC Biology	278
BSC Biology (Special)	153
BSC Biomedical Technology (Special)	116
BSC Chemistry	86
BSC Chemistry & Management (Special)	55
BSC Chemistry (Special)	47
BSC Computer Science	30
BSC Computer Science & Management (Special)	30
BSC Computer Science (Special)	162
BSC Electronics	9
BSC Environmental & Natural Resource Management	10
BSC Environmental Science & Sustainable Technology (Special)	168
BSC Environmental Science	39
BSC General	188
BSC Industrial Chemistry	1
BSC Information Technology	127
BSC Information Technology (Special)	94
BSC Mathematics	71
BSC Mathematics (Special)	41
BSC Mathematics and Applied Statistics (Special)	7
BSC Nutritional Sciences	1

Section 8 – Appendices

Appendix 1: Enrolment by Programme and Degree Type 2016/2017	
Programme	2016
BSC Physics	135
BSC Statistics and Economics (Special)	58
Social Sciences	3304
Certificate	214
CERT Public Administration	214
Diploma	15
DIP Public Sector Management	15
First Degree	3075
BSC Accounting	125
BSC Accounting (Special)	91
BSC Banking & Finance (Special)	43
BSC Criminology & Criminal Justice	123
BSC Economics	240
BSC Economics (Special)	20
BSC Hospitality & Tourism Management (Hospitality Specialty)	1
BSC Hospitality & Tourism Management (Special)	3
BSC Hotel Management (Special)	3
BSC Insurance & Risk Management (Special)	24
BSC International Tourism Management (Special)	63
BSC International Relations (Special)	277
BSC International Tourism Management	2
BSC Leadership and Management	361
BSC Management Studies	545
BSC Management Studies (Special)	35
BSC Political Science	128
BSC Psychology	348
BSC Psychology (Special)	49
BSC Public Sector Management (Special)	157
BSC Social Work (Special)	121
BSC Sociology	236
BSC Sports Management	75
BSC Tourism Management (Special)	5
Grand Total	17628

Section 8 – Appendices

Appendix 1: Enrolment by Programme and Degree Type 2016/2017	
Programme	2016
Graduate	1854
Engineering	258
Doctorate	11
PHD Civil Engineering	2
PHD Electrical & Computer Engineering	2
PHD Food Science & Technology Engineering	1
PHD Geoinformatics	1
PHD Geoscience	2
PHD Mechanical Engineering	1
PHD Project Management	1
PHD Urban & Regional Planning	1
Graduate Diploma	5
DIPG Construction Management	1
DIPG Electrical & Computer Engineering	1
DIPG Petroleum Engineering & Management	2
DIPG Petroleum Engineering	1
Master of Philosophy	15
MPhil Electrical & Computer Engineering	2
MPhil Food Science & Technology Engineering	2
MPhil Geoinformatics	2
MPhil Geoscience	4
MPhil Industrial Engineering	1
MPhil Manufacturing Engineering	1
MPhil Petroleum Engineering	1
MPhil Petroleum Geoscience	1
MPhil Urban & Regional Planning	1
Taught Masters	227
MASC Electrical & Computer Engineering	16
MSC Chemical & Process Engineering with Management	7
MSC Chemical & Process Engineering	3
MSC Civil Engineering	10
MSC Coastal Engineering & Management	1
MSC Coastal Zone Engineering & Management	9
MSC Construction Management	29
MSC Engineering Asset Management	4
MSC Engineering Management	9

Section 8 – Appendices

Appendix 1: Enrolment by Programme and Degree Type 2016/2017	
Programme	2016
MSC Food Science & Technology Engineering	19
MSC Geoinformatics	16
MSC Manufacturing Engineering & Management	10
MSC Petroleum Engineering	18
MSC Production Engineering & Management	9
MSC Production Management	16
MSC Project Management	30
MSC Reservoir Engineering	12
MSC Urban & Regional Planning	8
MSC Water & Wastewater Services Management	1
Food & Agriculture	58
Doctorate	13
PHD Agri-Food Safety & Quality Assurance	2
PHD Agricultural Economics	3
PHD Agricultural Extension	2
PHD Crop Protection	1
PHD Crop Science	1
PHD Human Ecology	1
PHD Livestock Science	2
PHD Soil Science	1
Graduate Diploma	1
DIPG Agri-Food Safety & Quality Assurance	1
Master of Philosophy	13
MPHIL Agricultural Economics	2
MPHIL Agricultural Extension	2
MPHIL Crop Science	2
MPHIL Human Ecology	2
MPHIL Livestock Science	3
MPHIL Tropical Crop Protection	2
Taught Masters	31
MSC Agri-Food Safety & Quality Assurance	20
MSC Agricultural Economics	3
MSC Marketing and Agribusiness	3
MSC Tropical Animal Science & Production	5
Gender & Development Studies	24

Section 8 – Appendices

Appendix 1: Enrolment by Programme and Degree Type 2016/2017	
Programme	2016
Doctorate	3
PHD Interdisciplinary Gender Studies	3
Graduate Diploma	2
DIPG Gender & Development Studies	2
Master of Philosophy	3
MPhil Interdisciplinary Gender Studies	3
Taught Masters	16
MSc Gender & Development Studies	16
Humanities & Education	363
Doctorate	15
PHD Cultural Studies	2
PHD Education	6
PHD History	1
PHD Literatures in English	6
Graduate Certificate	22
CERT University Teaching & Learning	22
Graduate Diploma	196
DIPG Education	190
DIPG Interpreting Techniques	6
Master of Philosophy	16
MPhil Cultural Studies	2
MPhil Education	7
MPhil French	2
MPhil History	4
MPhil Linguistics	1
Taught Masters	114
MA Creative Design-Entrepreneurship	6
MA Cultural Studies	16
MA History	1
MA Leadership Technical Vocational Education & Training	10
MA Literatures in English	1
MA Spanish	4
MED Education	45
MED Inclusive & Special Education	26
MFA Creative Writing	5

Section 8 – Appendices

Appendix 1: Enrolment by Programme and Degree Type 2016/2017	
Programme	2016
Law	42
Doctorate	1
PHD Law	1
Taught Masters	41
LLM Law	41
Medical Sciences	203
Doctor of Medicine	66
DM Anaesthesia and Intensive Care	11
DM Emergency Medicine	15
DM Family Medicine	4
DM General Internal Medicine	1
DM Obstetrics & Gynaecology	3
DM Orthopaedics	2
DM Otorhinolaryngology DM	3
DM Paediatrics	8
DM Psychiatry	7
DM Surgery	11
DM Urology	1
Doctorate	2
PHD Molecular Genetics	1
PHD Veterinary Parasitology	1
Graduate Diploma	72
DIPG Emergency Medicine	42
DIPG Family Medicine	16
DIPG Management of HIV Infection	14
Master of Philosophy	7
MPhil Community Health	1
MPhil Human Physiology	1
MPhil Pharmacology	2
MPhil Veterinary Pathology	2
MPhil Veterinary Public Health	1
Taught Masters	56
MPH Public Health	11
MSc Clinical Psychology	16
MSc Family Medicine	5
MSc Medical Microbiology	16
MSc Nursing	8

Section 8 – Appendices

Appendix 1: Enrolment by Programme and Degree Type 2016/2017	
Programme	2016
Science & Technology	170
Doctorate	13
PHD Chemistry	1
PHD Computer Science	1
PHD Environmental Biology	4
PHD Mathematics	1
PHD Microbiology (FST)	1
PHD Physics	1
PHD Plant Science	1
PHD Statistics	3
Master of Philosophy	31
MPHIL Biochemistry (FST)	1
MPHIL Chemistry (FST)	12
MPHIL Computer Science	4
MPHIL Environmental Biology	1
MPHIL Mathematics	2
MPHIL Microbiology (FST)	3
MPHIL Physics	3
MPHIL Plant Science	4
MPHIL Zoology	1
Qualifying	3
000000 Undeclared	3
Taught Masters	123
MSC Biodiversity Conservation & Sustainable Development in the Caribbean	10
MSC Biomedical Physics	12
MSC Biotechnology	8
MSC Computer Science & Technology	13
MSC Mathematics	5
MSC Occupational & Environmental Safety & Health	40
MSC Renewable Energy Technology	24
MSC Statistics	11
Social Sciences	732
Doctorate	43
DBA Business Administration	23
PHD Business Administration	5
PHD Criminology & Criminal Justice	1
PHD Economic Development Policy	1
PHD Economics	1

Section 8 – Appendices

Appendix 1: Enrolment by Programme and Degree Type 2016/2017	
Programme	2016
PHD International Relations	4
PHD Psychology	1
PHD Social Policy	2
PHD Sociology	5
Graduate Certificate	13
CERT Authentic Business Education	13
Graduate Diploma	94
DIPG Information Systems & Technology Management	3
DIPG Institutional Innovation & Effectiveness	5
DIPG International Master of Business Development	3
DIPG International Relations	26
DIPG International Trade Logistics & Procurement	5
DIPG Mediation Studies	32
DIPG Small & Medium Enterprise Management	4
DIPG Sports Management	12
DIPG Strategic Marketing	1
DIPG Tourism Development & Management	3
Master of Philosophy	20
MPHIL Criminology & Criminal Justice	2
MPHIL Economics	4
MPHIL Government	3
MPHIL International Relations	5
MPHIL Sociology	6
Taught Masters	562
EMBA Business Administration	41
IMA Strategic Marketing	20
IMBDI International Master of Business Development	17
MBA Business Administration	73
MBA International Trade Logistics & Procurement	14
MBA Sustainable Energy Management	20
MHRM Human Resource Management	21
MPM Port and Maritime Management	2
MSC Applied Psychology	7
MSC Aviation Management	11
MSC Criminology & Criminal Justice	20
MSC Development Statistics	15

Section 8 – Appendices

Appendix 1: Enrolment by Programme and Degree Type 2016/2017	
Programme	2016
MSC Economics	21
MSC Financial Economics	4
MSC Global Studies	34
MSC Government	1
MSC Information Systems & Technology Management	11
MSC Institutional Innovation & Effectiveness	10
MSC International Finance	10
MSC Management Studies	22
MSC Mediation Studies	12
MSC Port and Maritime Management	9
MSC Public Sector Management	16
MSC Sociology	15
MSC Sports Management	1
MSC Strategic Leadership & Management	91
MSC Tourism Development & Management	9
MSME Small & Medium Enterprise Management	16
MSW Social Work	19
The UWI Seismic Research Centre	4
Master of Philosophy	4
MPHIL Seismology	3
MPHIL Volcanology	1
Undergraduate	3353
Engineering	374
Certificate	28
CERT Geomatics & Land Information Systems	28
First Degree	346
BSC Geomatics	23
BSC Land Management	6
BSC Petroleum Geoscience	17
BSC Chemical & Process Engineering	48
BSC Civil Engineering	40
BSC Civil with Environmental Engineering	18
BSC Electrical & Computer Engineering	73
BSC Industrial Engineering	16
BSC Mechanical Engineering with Biosystems	13
BSC Mechanical Engineering	92

Section 8 – Appendices

Appendix 1: Enrolment by Programme and Degree Type 2016/2017	
Programme	2016
Food & Agriculture	208
Diploma	18
DIP Agriculture	6
DIP Institutional & Community Dietetics & Nutrition	12
First Degree	190
BSC Agribusiness	21
BSC Agribusiness Management	12
BSC Agricultural Technology	4
BSC Agriculture (Special)	26
BSC Entrepreneurship	2
BSC Environmental & Natural Resource Management	27
BSC Foods & Food Service Systems Management	1
BSC Geography	33
BSC Human Ecology	13
BSC Human Nutrition & Dietetics	42
BSC Nutritional Sciences	8
BSC Tropical Landscaping	1
Humanities & Education	444
Certificate	131
000000 English as a Foreign Language	49
CERT Art & Science of Coaching	11
CERT Dance & Dance Education	5
CERT Drama/Theatre in Education	12
CERT Early Childhood Care & Development	18
CERT Music	14
CERT Technical Theatre Production	11
CERT Visual Arts	11
First Degree	313
BA Carnival Studies	1
BA Communication Studies	55
BA Dance	6
BA English Language & Literature with Education	31
BA Film	11
BA Film Production	1
BA Film Studies	1
BA French	8
BA Geography	3
BA History	9
BA Latin American Studies	1

Section 8 – Appendices

Appendix 1: Enrolment by Programme and Degree Type 2016/2017	
Programme	2016
BA Linguistics	14
BA Literatures in English	23
BA Mathematics	1
BA Musical Arts (Special)	16
BA Spanish	23
BA Theatre Arts	18
BA Theology	9
BA Visual Arts (Special)	29
BED Early Childhood Care Education	30
BED Primary (General)	23
Law	140
First Degree	140
LLB Law	140
Medical Sciences	487
Diploma	27
DIP Nursing	12
DIP Paediatrics Haematology Oncology Nursing	15
First Degree	460
BSC Nursing	84
BSC Optometry	22
BSC Pharmacy	64
DDS Dental Surgery	31
DVM Veterinary Medicine	35
MBBS Medicine & Surgery	224
Science & Technology	673
First Degree	673
BSC Actuarial Science (Special)	50
BSC Biochemistry (Science)	83
BSC Biology	59
BSC Biology (Special)	51
BSC Biomedical Technology (Special)	49
BSC Chemistry	19
BSC Chemistry & Management (Special)	12
BSC Chemistry (Special)	18
BSC Computer Science	2
BSC Computer Science & Management (Special)	10
BSC Computer Science (Special)	79
BSC Electronics	8
BSC Environmental & Natural Resource Management	2

Section 8 – Appendices

Appendix 1: Enrolment by Programme and Degree Type 2016/2017	
Programme	2016
BSC Environmental Science & Sustainable Technology (Special)	49
BSC Environmental Science	25
BSC General	1
BSC Information Technology	11
BSC Information Technology (Special)	39
BSC Mathematics	16
BSC Mathematics (Special)	21
BSC Maths & Applied Stats (Special)	6
BSC Physics	44
BSC Statistics and Economics (Special)	19
Social Sciences	1027
Certificate	131
CERT Public Administration	131
Diploma	5
DIP Public Sector Management	5
First Degree	891
BSC Accounting	9
BSC Accounting (Special)	65
BSC Banking & Finance (Special)	11
BSC Criminology & Criminal Justice	65
BSC Economics	68
BSC Economics (Special)	6
BSC Hotel Management (Special)	2
BSC Insurance & Risk Management (Special)	4
BSC Int Tourism Management (Special)	28
BSC International Relations (Special)	73
BSC Leadership and Management	118
BSC Management Studies	144
BSC Management Studies (Special)	10
BSC Political Science	35
BSC Psychology	85
BSC Psychology (Special)	15
BSC Public Sector Management (Special)	37
BSC Social Work (Special)	41
BSC Sociology	54
BSC Sports Management	17
BSC Tourism Management (Special)	4
Grand Total	5207

Section 8 – Appendices

Appendix 2: Top 10 Undergraduate and Postgraduate Programmes with Highest Enrolment	
Programme	2016
Graduate	1773
DIPG Education	212
EMBA Business Administration	173
MBA Business Administration	296
MED Education	152
MSC Construction Management	96
MSC Criminology & Criminal Justice	100
MSC Occupational & Environmental Safety & Health	164
MSC Project Management	236
MSC Public Sector Management	93
MSC Strategic Leadership & Management	251
Undergraduate	4383
BSC Biology	278
BSC International Relations (Special)	277
BSC Leadership and Management	361
BSC Management Studies	545
BSC Nursing	303
BSC Psychology	348
BSCE Electrical & Computer Engineering	294
BSCE Mechanical Engineering	343
LLB Law	340
MBBS Medicine & Surgery	1294
Grand Total	6156

Section 8 – Appendices

Faculty of Medical Sciences – Summary Table by Schools	
Appendix 3: Total Enrolment for Faculty of Medical Sciences by Student Level and School /Department	
School/Department	2016
Graduate	542
Not Identifiable	38
Clinical Medical Sciences	136
Clinical Surgical Sciences	229
Clinical Veterinary Medicine	14
Pre-Clinical Sciences	12
School of Advanced Nursing	29
Para Clinical Sciences	84
Undergraduate	2338
Not Identifiable	1
Office of the Dean-FMS	92
School of Advanced Nursing	329
School of Dentistry	220
School of Medicine	1294
School of Pharmacy	235
School of Veterinary Medicine	167
Grand Total	2880

Appendix 4: Graduation Head Count for Faculty of Medical Sciences	
by Student Level and School /Department	
School/Department	2016
Graduate	125
Not Identifiable	4
Clinical Medical Sciences	36
Clinical Surgical Sciences	38
Para-Clinical Sciences	24
Pre-Clinical Sciences	2
School of Advanced Nursing	21
Undergraduate	537
Not Identifiable	1
Office of the Dean-FMS	23
Para-Clinical Sciences	60
School of Advanced Nursing	129
School of Dentistry	52
School of Medicine	242
School of Veterinary Medicine	30
Grand Total	662



UWI
ST. AUGUSTINE
CAMPUS