



*Our aspiration is to ensure your satisfaction.*

*Please contact us for further information.*

The University of the West Indies  
Faculty of Food and Agriculture  
Department of Food Production  
(DFP)  
Frank Stockdale Building  
St. Augustine  
Trinidad, W.I

Phone: 1-868-662-2002  
Ext's.: 83799, 82090

E-mail: [agri.services@sta.uwi.edu](mailto:agri.services@sta.uwi.edu)  
Website: <https://sta.uwi.edu/ffa/>



The University of the West Indies  
Faculty of Food and Agriculture  
Department of Food Production

AGRO-ENVIRONMENTAL  
SERVICES

## ANIMAL NUTRITION AND FEED ANALYSIS



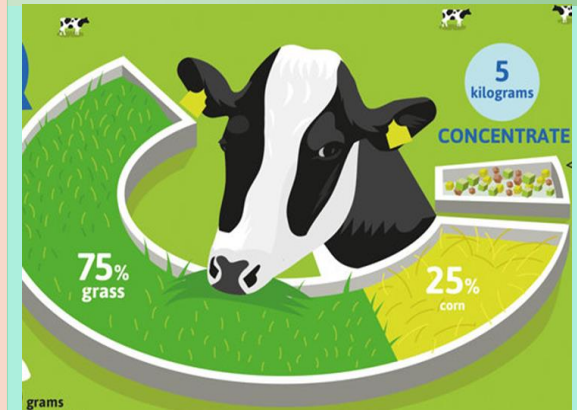
### Objective

Our primary objective is to assist livestock farmers to satisfy the nutritional requirements of their animals by providing accurate and timely nutritional analysis of the available feedstuffs and nutritional management solutions for improved productivity.

### Services

We provide the following services

1. Detailed and accurate analysis of the nutrient profile of feeds and feedstuffs for livestock. This analysis includes:
    - Dry Matter (DM)
    - Organic Matter (OM)
    - Ash
    - Fiber analysis (CF, NDF, ADF, ADL)
    - Crude protein (CP)
    - Crude fat (CFat)
    - *In-vitro* true dry matter digestibility (IVTDMD)
- We provide nutritional analysis for the following types of feedstuffs
- Fresh forages (grass, legumes, shrubs)
  - Conserved forages (hay, haylage, silage)
  - Commercial concentrate feeds
  - Agro-industrial by-products
  - Other nonconventional feedstuffs
2. Nutritional management solutions including feed formulation and feeding programmes for ruminant livestock.



### Why test at the UWI?

The animal nutrition and feed analysis services provided by the DFP will improve the productivity on local and regional livestock farms by enabling the farmer to accurately formulate feeds from available feedstuffs to satisfy the nutritional needs of their animals.

**Qualified and Well trained staff**

**Results fit for purpose**

**Value for your money**

## What tests/services are available ?

1- Nutrient profile of feed and feedstuff for domestic farm animals

2- Feed Formulation

3- Feeding Programmes

## What is the Cost for Feed Analysis?

### Costing

- Cost includes labour and material
- Sample preparation cost is optional as the customer has the option of preparing the samples.
- Standard prices are invoiced. All discounts are at the discretion of academic staff and head only and will be reflected in the invoice.



## What are the packaged options ?

### Service Option

Four Service Options are offered

Option A: Customized Package or individual analysis - The customer can select the analysis or service of interest. The invoice will include the individual prices. .

Option B: Standard package  
This package includes all analysis except fat and digestibility analyses.. This has a built-in cost that can be negotiated up to a 10% limit.

Option C: Gold package  
Package includes entire suite of analyses. This has a built-in cost that can be negotiated up to a 10% limit.

Option D: Platinum package –  
Option C + feed formulation and feeding program/s)



## How do I send Samples to the Lab?

### Protocols

#### Sample Delivery

- Call to schedule delivery of your feed samples
- Fresh forage samples must be delivered within 48-hours after harvest
- Samples must be free from non-feed material such as soil, manure etc
- Package and deliver samples in secured zip-loc bags
- Each sample must be at least 500g (fresh weight)

#### Sample Disposal

No samples are returned to the client. All samples are disposed of properly following good laboratory practices after analysis.

