



**UWI**

ST. AUGUSTINE  
CAMPUS

DIVISION OF STUDENT  
SERVICES & DEVELOPMENT



# NEW STUDENT ORIENTATION GUIDE



WELCOME PELICANS!





CONGRATULATIONS  
& WELCOME

TO YOUR **FIRST YEAR EXPERIENCE**

**UWI**  
**PELICANS**  
*ST AUGUSTINE CAMPUS*

**LET'S GET STARTED!**



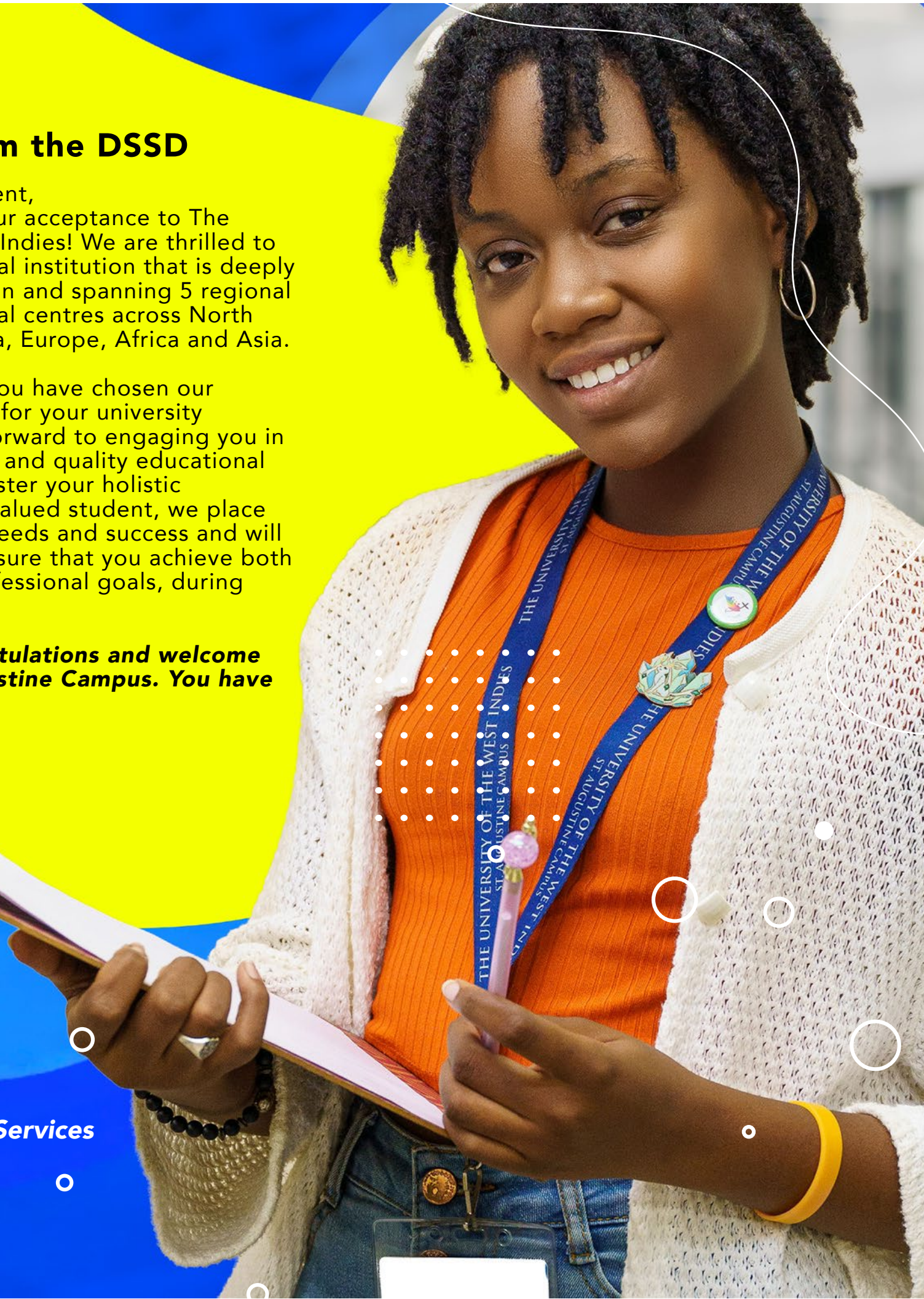
## A Message from the DSSD

Valued First Year Student,  
Congratulations on your acceptance to The University of the West Indies! We are thrilled to have you join our global institution that is deeply rooted in the Caribbean and spanning 5 regional campuses and 10 global centres across North America, Latin America, Europe, Africa and Asia.

We are honored that you have chosen our St. Augustine Campus for your university experience and look forward to engaging you in a stimulating, dynamic and quality educational experience that will foster your holistic development. As our valued student, we place high priority on your needs and success and will partner with you to ensure that you achieve both your personal and professional goals, during your time with us.

***Again, we say congratulations and welcome to The UWI, St. Augustine Campus. You have made a fine choice!***

Best wishes from the  
**Division of Student Services  
and Development**





# WHAT'S INSIDE YOUR FYE ORIENTATION GUIDE

1

## **New Student Orientation Plans**

- Participating in FYE
- Events & Activities
- FYE Web Resources

2

## **Before Classes Begin**

- New Student Checklist
- Introduction to Academic Advising
- Registration in 7 Easy Steps

3

## **Support Services & Resources**

- The UWI STA Campus Libraries
- The DSSD
- Student Accounts- The Bursary







# ABOUT

## THE UWI ST. AUGUSTINE'S FIRST YEAR EXPERIENCE (FYE) PROGRAMME

The first year of study is a critical and defining period in most, if not every student's life as it often underpins and lays the foundation for the entire university experience. It is a time of major transition that may involve a "honeymoon phase" followed by moments of "culture shock", "initial adjustment", "mental isolation" and finally, "acceptance and integration". It is for this reason that The UWI St. Augustine Campus seeks to engage you and all new students in a formal orientation experience that provides support as you transition to campus life and the University environment.

The FYE programme is designed specifically for you and features a combination of dynamic and exclusive orientation activities, initiatives and events that will primarily meet your informational demands whilst facilitating academic preparedness and personal/ social integration into the campus community as you transition. By participating in the programme you will be prepared for success at The UWI and mentally stimulated for an exciting and holistic learning experience!

**FYE is here for you and we invite you to connect, engage, immerse and enjoy!**





# FYE EVENTS, ACTIVITIES & INITIATIVES

- **SMART START:** Pre-orientation programme that features weekly information sessions (virtual) and interactive discussions on related matters of first year student transition including semester registration, campus life and next steps following receipt of your offer to The UWI St. Augustine Campus.
- **FYE MIXERS:** Social engagement opportunities to meet your peers and form friendships ahead of the start of the semester. Campus tours and social engagement opportunities to meet your peers and form friendships ahead of the start of the semester.
- **FYE BUZZ:** A dynamic live show broadcasted on Youtube and hosted by current students to keep you in the know with all campus activities and orientation events.
- **FYE 101:** Self-paced orientation course featuring 8 comprehensive video lessons that introduce new students to key campus personnel, campus resources, student support services, library services and all things campus life! Course registration opens in August and can be accessed through the online student platform (my e-Learning).
- **UWI CLICKS:** Online tutorials that introduce students to the "MyeLearning" platform and aid in understanding and navigating the student portal in preparation for course selection, registration and submission of course work/assignments.
- **GUILD FEST:** Week long orientation activities hosted by the Student Guild, featuring experiential attractions including cultural presentations, competitions, student club events and giveaways.
- **HEALTH & WELLBEING:** Mental health awareness and support workshops that promote a healthy and balanced student life.
- **KNOW YOUR LIBRARY:** Introductory resource and information sessions on The UWI St. Campus Libraries.
- **FACULTY ORIENTATION:** Faculty specific orientation sessions that allow you to meet your Faculty Dean and staff at the Faculty Office, Heads of Departments, lecturers and other first time students.
- **UWI LIFE:** Dynamic and festive campus welcome event for all new students featuring guest appearances, live performances, giveaways and the opportunity to meet the Campus Principal and other members of the campus Executive Management team!





# FYE EVENTS, ACTIVITIES & INITIATIVES

CONTINUED



- **INVOLVEMENT ADVISING:** Virtual sessions to introduce and help connect students to exciting out of classroom engagement, campus life activities and developmental opportunities.

- **ORIENTATION FOR STUDENTS WITH DISABILITIES & MEDICAL CONDITIONS.**

- **CHECK-IN:** Weekend orientation for new regional and international students.

- **AIRPORT MEET & GREET:** Airport welcome and airport transfer taxi service for incoming regional/international students.

- **THE POSTGRADUATE WELCOME CEREMONY:** orientation and networking event for new students pursuing graduate programmes.

- **MANAGING MY FINANCES:** Financial literacy workshop series for new students.

- **CO-CURRICULAR AWARENESS OPEN DAY:** designed to introduce students to the exciting co-curricular programmes that students can pursue while on campus.

- **FIRST GENERATION STUDENTS:** "First Gen. STAR (Successful, Transition, Academic, Readiness) Programme"- peer mentorship programme and recognition ceremony for first generation students i.e. new students who identify as being the first in their family to attend university.

- **LET'S TALK EXAMS:** Exam information and support services to help prepare new students for the examination season.

- **WELCOME HOME:** Orientation for all New Students moving onto The UWI Halls Of Residence.

- **PRE-UNIVERSITY STUDENTS:** Sensitization and Support Sessions.

- **THE SEMESTER KICK OFF:** Virtual information session designed to get new students ready for the start of the new semester

- **UWI LIFE SUPPORT:** Exclusive information session for parents, guardians and spouses.

- **MATRICULATION AND WELCOME CEREMONY:** The special occasion where new students are formally recognised as members of the University and acceptance into the academic community is marked by the signing of the Matriculation Register.



## PARTICIPATING IN



Look out for e-mails. Be sure to consistently check your email for all FYE event invitations and updates.



Join the DSSD student community on Instagram at [dssd\\_uwista](#) and be sure to follow and connect with The UWI St. Augustine Campus across all digital and social media platforms.



Visit our website to live chat and connect with the FYE Team, <https://sta.uwi.edu/fye>



Set reminders to participate in the series of FYE events and activities and carefully read and follow the email instructions provided for participating in the online and in-person events and activities that will be hosted.



# SMART START

## LOOK OUT FOR THESE FYE INITIATIVES IN JULY

### SMART START: PRE ORIENTATION

A four (4) part series of weekly support sessions that provide pertinent information on registration, general student matters and insights into what to expect from your university experience!

### PRE DEPARTURE INFORMATION SESSIONS-

regional and international students are invited to join us virtually for these very important sessions.

**FYE MIXERS** Features a walking campus tour followed by an exciting afternoon of social engagement, activities and giveaways that allows for relationship building with other first year students!.





# ALL OF AUGUST!

- Welcome Home for new Hall Residents!
- Airport Meet & Greet for Regional and International Students
- Check In Weekend Orientation for Regional and International Students
- UWI Clicks - introduction to the student portal and the importance of cybersecurity
- Health & Wellbeing Workshop
- Know Your Library

**CLICK TO  
PLAY COURSE  
FYE 101  
INTRODUCTION**

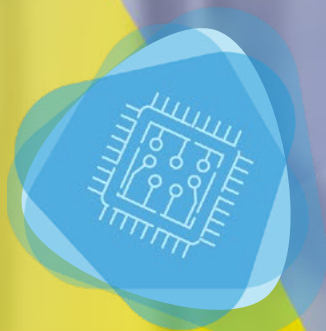




# FACULTY ORIENTATION SESSIONS



(CLICK ICONS TO VIEW FACULTY WEBSITE)



THE FACULTY OF  
**ENGINEERING**



THE FACULTY OF  
**MEDICAL  
SCIENCES**



THE FACULTY OF  
**FOOD &  
AGRICULTURE**



THE FACULTY OF  
**SCIENCE &  
TECHNOLOGY**



THE FACULTY OF  
**HUMANITIES  
& EDUCATION**



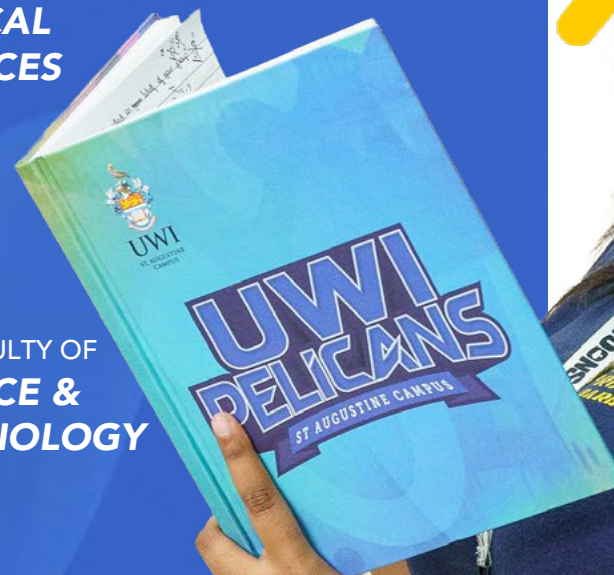
THE FACULTY OF  
**SOCIAL  
SCIENCES**



THE FACULTY OF  
**LAW**



THE FACULTY OF  
**SPORT**





# ACADEMIC ADVISING

CLICK TO  
LEARN MORE







# REGISTRATION IN 7 EASY STEPS

1

GET YOUR  
REGISTRATION  
INFORMATION

2

REGISTER  
FOR GATE

3

GO TO  
ACADEMIC  
ADVISING

4

SELECT  
COURSES  
ONLINE

5

ENROLL  
IN FEE  
PAY

6

'GET UWI  
STUDENT ID  
CARD'

7

MAINTAIN  
FINANCIAL  
CLEARANCE

(CLICK EACH SECTION FOR MORE INFORMATION)





# STUDENT CHECKLIST



Connect with and follow The UWI St. Augustine Campus on all social media platforms.



Review the details of your offer letter and verify for accuracy i.e. name, programme of choice etc.



Join the **DSSD** student community on Instagram and connect with The UWI St. Augustine Campus across all digital platforms.



Connect with your Faculty for information on academic advising and course registration.



Obtain financial clearance by paying relevant fees within the appropriate timeframe.



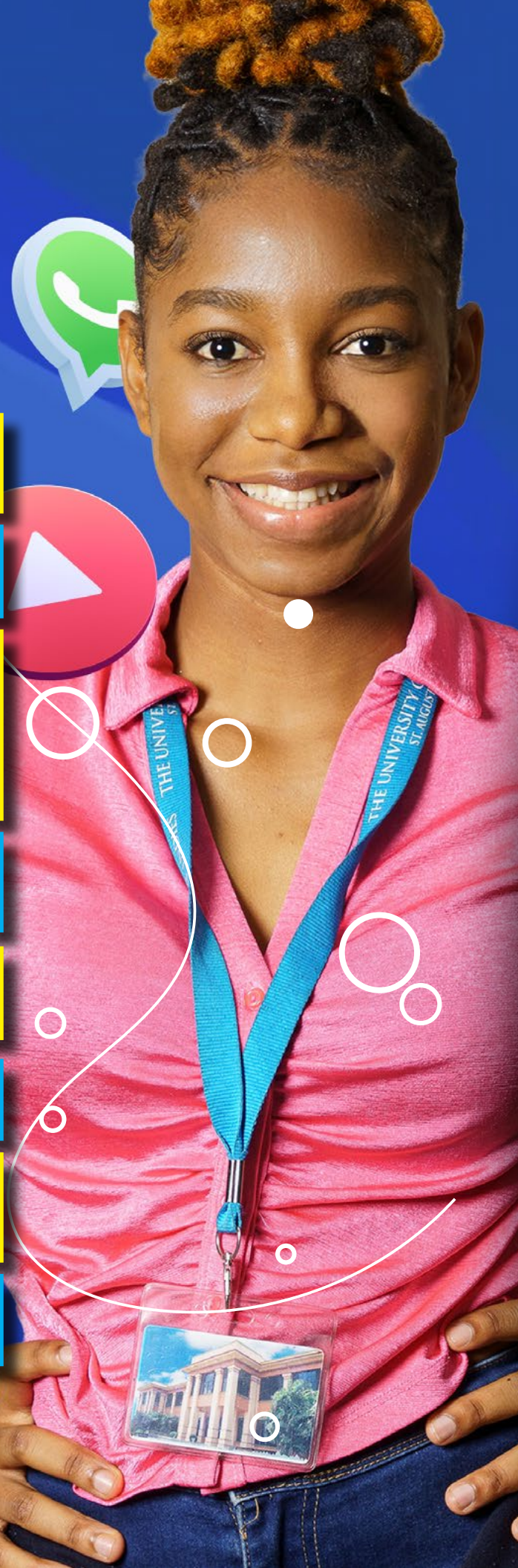
Secure Student ID and access to student email.



Participate in orientation activities and complete the online 'FYE 101' course.



Review your class timetable.







# PARTICIPATING IN FYE WILL HELP:

Meet your informational demands as you transition to your first year of study.

Foster your integration into the campus community and help you to forge lifelong friendships.

Stimulate an excitement for learning as you prepare for a dynamic educational and campus life experience.





# **UWILLIFE**

- Campus welcome event for all new students -

# **GUILD FEST**

- Week long event hosted by The UWI -  
St. Augustine Guild Council



**FYE  
TOP  
5**



**CLICK TO PLAY**

**Ruqayyah**

**Christon**



A woman with long braids, wearing a red floral crop top and brown pants, sits in a red wheelchair. The background is a bright indoor space with large windows and green plants. The image is decorated with a yellow house-shaped graphic, white torn-paper-like shapes, and several orange circles of varying sizes connected by a thin white line.

# ORIENTATION FOR STUDENTS WITH DISABILITIES & MEDICAL CONDITIONS

Hosted by the Student Life  
and Development Department  
(SLDD)

*Visit the website here*



(CLICK ICONS FOR MORE INFORMATION)



***dssd\_uwista***



***FYE Youtube***



***FYE Website***

**FYE**  
**RESOURCES**  
**JUST FOR**  
**YOU!**





instagram



facebook



tiktok

# CONNECT WITH US!







*We are here to support you all through  
your student journey!*

**THANK YOU FOR  
MAKING THE  
CHOICE TO #BEUWI**

