



**UWI**

ST. AUGUSTINE  
CAMPUS

THE UNIVERSITY OF THE WEST INDIES  
ST. AUGUSTINE CAMPUS

# Student Statistical Digest

**2011/2012 – 2015/2016**

Prepared by the Campus Office of Planning and Institutional Research



# Contents

Foreword .....	2
Introduction .....	3
Definitions of Key Terms and Concepts .....	4
Student Statistics Summary of Enrolment and Graduation Trends .....	5
Enrolment Trends .....	5



<b>Total Enrolment for Academic Year 2015/2016 .....</b>	<b>5</b>
<b>Table 1.1:</b> Overview of Enrolment for Academic Year 2015/2016 .....	5
<b>Table 1.2:</b> Overview of Other Student Enrolment for Academic Year 2015/2016 .....	6
<b>Table 1.3:</b> Enrolment - Top 25 Programs by Faculty and Programme – 2015/2016 .....	7



<b>Enrolment Trends for Academic Years 2011/2012 to 2015/2016 .....</b>	<b>8</b>
<b>Figure 2.a:</b> Total Enrolment by Student Level – 2011/2012 to 2015/2016 .....	8
<b>Table 2.1:</b> Total Enrolment by Level – 2011/2012 to 2015/2016 .....	8
<b>Table 2.2:</b> Total Enrolment by Level, Faculty and Session – 2011/2012 to 2015/2016 .....	9
<b>Table 2.3:</b> Total Enrolment by Level, Faculty and Degree Type – 2011/2012 to 2015/2016 .....	12
<b>Table 2.4:</b> New Student Admissions by Level and Faculty – 2011/2012 to 2015/2016 .....	15



<b>Demographic Profile .....</b>	<b>16</b>
<b>Table 3.1:</b> Total Enrolment by Level, Faculty and Sex – 2011/2012 to 2015/2016 .....	16
<b>Table 3.2:</b> Total Enrolment by Level, Sex and Age Groups – 2011/2012 to 2015/2016 .....	19
<b>Table 3.3:</b> Enrolment by Level and Contributing Countries – 2011/2012 to 2015/2016 .....	20
<b>Table 3.4:</b> Enrolment by Level and Non Contributing Countries – 2011/2012 to 2015/2016 .....	21
<b>Figure 3.a:</b> Enrolment by Nationality – 2011/2012 to 2015/2016 .....	23



<b>Faculty Trends .....</b>	<b>24</b>
<b>Figure 4.a:</b> Undergraduate Enrolment by Faculty – 2011/2012 to 2015/2016 .....	25
<b>Figure 4.b:</b> Postgraduate Enrolment by Faculty – 2011/2012 to 2015/2016 .....	25



<b>Trends in Graduate Output .....</b>	<b>26</b>
<b>Table 5.1:</b> Output of Graduates by Level and Faculty – 2011/2012 to 2015/2016 .....	27
<b>Table 5.2:</b> Output of Graduates by Level and Gender – 2011/2012 to 2015/2016 .....	27
<b>Table 5.3:</b> Output of First Degrees by Degree Type and Degree Honours – 2011/2012 to 2015/2016 .....	28
<b>Table 5.4:</b> Output of Postgraduate Degrees by Degree Type and Degree Honours – 2011/2012 to 2015/2016 .....	30



<b>Current Snapshot 2016-2017 .....</b>	<b>33</b>
<b>Table 6.1:</b> Total Enrolment by Level and Sex – 2016/2017 .....	33
<b>Table 6.2:</b> New Student Admissions by Faculty & Level – 2016/2017 .....	33
<b>Table 6.3:</b> New Admissions by Programme (Top 25) – 2016/2017 .....	34



<b>Other Students .....</b>	<b>35</b>
<b>Table 7.1:</b> Total Enrolment Other Students – 2011/2012 to 2015/2016 .....	35
<b>Table 7.2:</b> Total Enrolment Other Students by Faculty and Programme – 2011/2012 to 2015/2016 .....	35



<b>Appendices .....</b>	<b>36</b>
<b>Appendix 1:</b> Total Student Enrolment by Level and Country of Nationality – 2011/2012 to 2015/2016 .....	36
<b>Appendix 2:</b> Total Student Enrolment - All Programmes – 2015/2016 .....	39
<b>Appendix 3:</b> New Student Admissions by Programme – 2016/2017 .....	51

## Foreword

The University of the West Indies, St. Augustine Campus presents its Student Statistical Digest 2015/2016. This is an annual exercise which records relevant historical and current data on the student population. For the first time, these statistics are being presented to the Campus Council and the wider public in a format where the statistics cover a five year period (2011/2012 to 2015/2016). It examines student admissions, enrolment, graduation and faculty trends. It also presents a demographic profile of students for the period, as well as student statistics for Semester 1 of the current academic year 2016/2017. It is hoped that this new format would prove to be more useful to the various stakeholders of The UWI, as a tool for data-driven decision making and to synchronise with other data gathered from other sources.

This report is the result of a collaborative effort between the **Campus Office of Planning and Institutional Research (COPIR)** and the **Office of the Campus Registrar**, with key input from other units namely, the **Student Admissions section**, the **Office of Graduate Studies and Research (OGSR)** and the **Examinations section of The UWI St. Augustine Campus**. We are grateful as well for the support of the **Campus Information Technology Service (CITS)** and the **Office of Marketing & Communications** in the production of this document. User comments and suggestions are welcome and may be sent to [reanti.singh@sta.uwi.edu](mailto:reanti.singh@sta.uwi.edu).



It is hoped that this new format would prove to be more useful to the various stakeholders of The UWI, as a tool for data-driven decision making and to synchronise with other data gathered from other sources.



# Introduction

The University of the West Indies is a four-campus tertiary education institution supported by 17 contributing countries. It offers undergraduate and postgraduate degrees in various fields of study to students from around the region and internationally. The St. Augustine Campus in Trinidad was born in 1960 out of the Imperial College of Tropical Agriculture (ICTA) and currently provides higher education to over 17,000 students. The St. Augustine Campus houses seven faculties: **Engineering, Food and Agriculture, Humanities and Education, Law, Medical Sciences, Science and Technology and Social Sciences** and also hosts a range of research units, centres and institutes. The UWI, St. Augustine continues to be dedicated to teaching and learning, research and innovation and to the development of the Caribbean region.

This report on The University of the West Indies St. Augustine Campus is a presentation to the St. Augustine Campus's Council for the academic year 2015/2016. The statistical information presented provides quantitative measures and utilises descriptive statistics to illustrate current and historical data on student participation and performance for the period 2011/2012 to 2015/2016. It also provides a snapshot of student statistics for Semester 1 of the current academic year, 2016/2017. The report delivers information on the following areas:

- a. Student statistics over a five-year period in respect of Student Admissions, Enrolment and Graduation
- b. Faculty statistical comparisons
- c. A demographic profile of students by nationality, age and sex
- d. Student enrolment at the programme level (for on-campus and off-campus students only, other students are excluded)

This report was prepared and presented by the **Campus Office of Planning and Institutional Research (COPIR)**. The statistics were generated using the **Campus's Business Intelligence system** with input from the **Student Admissions section, The Office of Graduate Studies and Research (OGSR) and the Examinations section**. This report represents a renewed approach to presenting the campus's student statistics to introduce statistical comparisons which serve to identify specific trends.

This document was produced with data that were generated as of **Monday February 6th 2017**. As such, any updates made to data subsequent to the aforementioned date would not be reflected in the statistics presented.



The statistical information presented provides quantitative measures and utilises descriptive statistics to illustrate current and historical data on student participation and performance for the period 2011/2012 to 2015/2016.

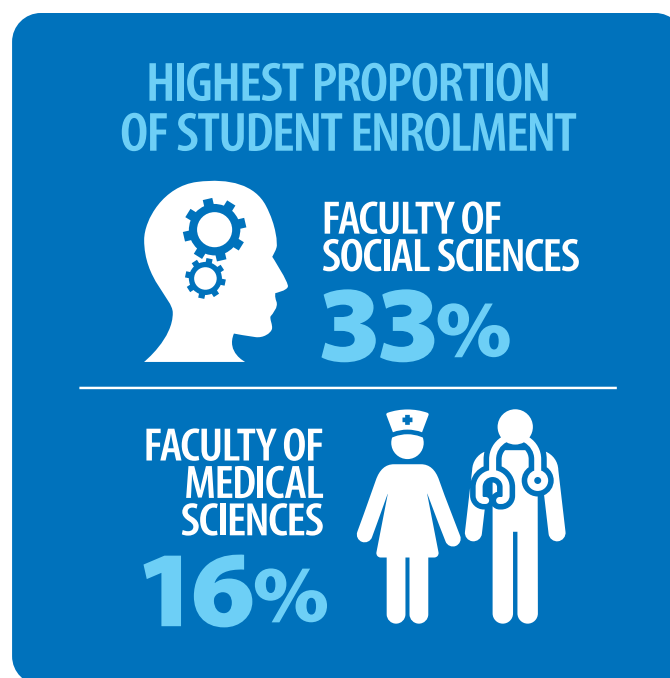
## Definitions of **Key Terms and Concepts**

<b>Contributing Students</b>	Students whose nations of origin include the UWI17.
<b>Evening</b>	Students who are registered in Certificate/Diploma or Degree programmes which are offered specifically through the Evening University.
<b>Full-time</b>	Registered students who carry the complete load of course credits associated with their university programme for that semester/academic year.
<b>Nationals</b>	Students whose nation of origin is Trinidad and Tobago.
<b>New Admissions</b>	Registered students who are new first time entrants to the University.
<b>Non-Contributing</b>	Students whose nation of origin includes all nations other than the UWI17.
<b>Not Identifiable (NI)</b>	Used to categorised any area where no data was entered in the data repository.
<b>Off Campus</b>	Students enrolled in programmes that are administered at UWI-affiliated institutions and are not located on the St. Augustine Campus.
<b>On Campus</b>	Students who attend classes on the St. Augustine or Mt. Hope campuses and are in pursuit of a degree, certificate or diploma programme.
<b>Other Students</b>	Students enrolled in courses undeclared, summer programmes and pre-university programmes.
<b>Part-time</b>	Registered students who carry less than the complete load of courses associated with their university programme for that semester/academic year.
<b>Postgraduate (PG)</b>	Students enrolled in programmes at the St. Augustine Campus which lead to the acquisition of a qualification beyond a first degree such as the Certificate, Diploma, PG Diploma, Taught Master, Master of Philosophy, Doctorate etc.
<b>Programme</b>	The course of study for which the student has been admitted into the University. This pertains to Undergraduate (BSc, BA, B.Ed.), Certificates, Diplomas, Advanced Diplomas and Higher Degrees (MA, MSc, MPhil, PhD, etc.).
<b>Qualifying</b>	Students who are enrolled in pre-qualification courses for postgraduate studies.
<b>Registration/Enrolment</b>	The process by which students, upon acceptance into a given faculty and programme at the University, give written notification of the courses which they wish to pursue during the current semester/academic year. Different aspects of the registration data are represented in the tables. For the purpose of this document, this includes both on and off campus students and excludes other students.
<b>Specially Admitted</b>	Students admitted to the University under special circumstances, such as to attend selected courses not associated with a particular programme.
<b>Student Session</b>	Students who are either enrolled in a full-time, part-time, evening, or summer basis.
<b>Summer</b>	Students enrolled to pursue courses during the summer semester which occurs from June to July of the academic year.
<b>Undergraduate (UG)</b>	Students enrolled at the St. Augustine campus in programmes which lead to the award of a Certificate, UG Diploma or First Degree.

## Total Enrolment for Academic Year 2015/2016

In this publication, total enrolment is representative of the seven faculties of Engineering, Food and Agriculture, Humanities and Education, Law, Medical Sciences, Science and Technology and Social Sciences. The Faculty of Food and Agriculture and the Faculty of Science and Technology were established by the demerger of the Faculty of Science and Agriculture in 2012. Additionally, The Faculty of Law was established in 2010.

During the period 2011/2012 to 2015/2016, The UWI, St. Augustine Campus experienced an average growth of 1% in total student enrolment (on and off-campus), of which, undergraduate enrolment comprised an average of 67% of the total student population and postgraduate enrolment, at approximately 30%. Other Students comprised only 2%.



**Table 1.1**

Overview of Enrolment for Academic Year 2015/2016			
On Campus and Off Campus	Undergraduate	Postgraduate	Total
<b>Faculty</b>			
Engineering	1369	1176	2545
Food & Agriculture	898	223	1121
Humanities & Education	1569	953	2522
Law	325	23	348
Medical Sciences	2321	541	2862
Science & Agriculture	0	1	1
Science & Technology	2080	509	2589
Social Sciences	3486	2495	5981
<b>Total</b>	<b>12048</b>	<b>5921</b>	<b>17969</b>
<b>Sex</b>			
Male	4375	2267	6642
Female	7673	3654	11327
<b>Total</b>	<b>12048</b>	<b>5921</b>	<b>17969</b>
<b>Session</b>			
Full-time	10091	1131	11222
Part-time	742	4456	5198
Evening	1214	334	1548
Summer	1	0	1
<b>Total</b>	<b>12048</b>	<b>5921</b>	<b>17969</b>

# Total Enrolment for Academic Year 2015/2016

**Table 1.2**

<b>Overview of Other Student Enrolment for Academic Year 2015/2016</b>			
	<b>Undergraduate</b>	<b>Postgraduate</b>	<b>Total</b>
<b>Faculty</b>			
No College Designated	190	0	190
Engineering	0	9	9
Food & Agriculture	0	8	8
Humanities & Education	0	44	44
Law	0	9	9
Medical Sciences	0	19	19
Science & Agriculture	0	1	1
Science & Technology	0	429	429
Social Sciences	0	59	59
<b>Total</b>	<b>190</b>	<b>578</b>	<b>768</b>
<b>Sex</b>			
Male	79	215	294
Female	109	363	472
Not Identifiable	2	0	2
<b>Total</b>	<b>190</b>	<b>578</b>	<b>768</b>
<b>Session</b>			
Full-time	190	565	755
Part-time	0	5	5
Evening	0	1	1
Not Identifiable	0	7	7
<b>Total</b>	<b>190</b>	<b>578</b>	<b>768</b>



# Total Enrolment for Academic Year 2015/2016

**Table 1.3**

Enrolment - Top 25 Programmes by Faculty and Programme - 2015/2016			
Student Level	Faculty	Programme	Total
Undergraduate	Medical Sciences	MBBS Medicine & Surgery	1278
Undergraduate	Social Sciences	BSC Management Studies	572
Undergraduate	Science & Technology	BSC Biology	422
Undergraduate	Engineering	BSC Mechanical Engineering	375
Undergraduate	Social Sciences	BSC Psychology	375
Graduate	Social Sciences	MBA Business Administration	358
Undergraduate	Science & Technology	BSC General	336
Undergraduate	Social Sciences	BSC Leadership and Management	327
Undergraduate	Engineering	BSC Electrical & Computer Engineering	324
Undergraduate	Law	LLB Law	324
Undergraduate	Social Sciences	BSC International Relations (Special)	312
Graduate	Engineering	MSC Project Management	307
Undergraduate	Social Sciences	BSC Sociology	290
Undergraduate	Medical Sciences	BSC Nursing	284
Undergraduate	Social Sciences	BSC Economics	271
Undergraduate	Medical Sciences	BSC Pharmacy	270
Graduate	Humanities & Education	DIPG Education	255
Undergraduate	Science & Technology	BSC Information Technology	245
Undergraduate	Social Sciences	CERT Public Administration	242
Graduate	Social Sciences	MSC Strategic Leadership & Management	239
Undergraduate	Food & Agriculture	BSC General	203
Undergraduate	Humanities & Education	BA Communication Studies	203
Graduate	Social Sciences	EMBA Business Administration	185
Undergraduate	Social Sciences	BSC Accounting	181

# Total Enrolment by Student Level – 2011/2012 to 2015/2016

Figure 2.a: Total Enrolment by Student Level – 2011/2012 to 2015/2016

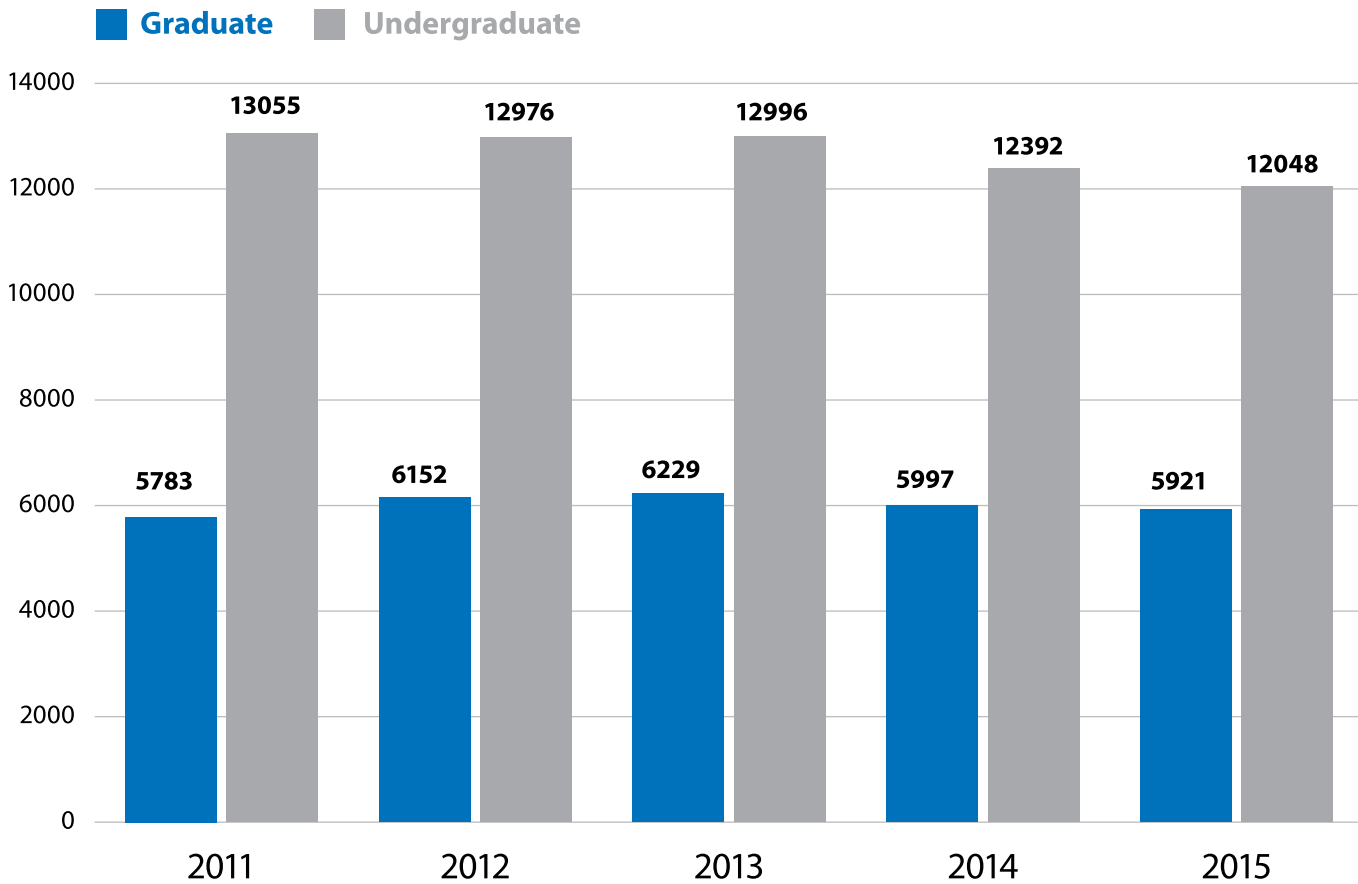


Table 2.1

Total Enrolment by Level – 2011/2012 to 2015/2016					
Student Level	2011	2012	2013	2014	2015
Graduate	5783	6152	6229	5997	5921
Undergraduate	13055	12976	12996	12392	12048
<b>Grand Total</b>	<b>18838</b>	<b>19128</b>	<b>19225</b>	<b>18389</b>	<b>17969</b>

# Total Enrolment by Student Level – 2011/2012 to 2015/2016

Table 2.2

Total Enrolment by Student Level, Faculty and Session – 2011/2012 to 2015/2016						
Student Level and Faculty	Student Session	2011	2012	2013	2014	2015
<b>GRADUATE</b>						
<b>Engineering</b>						
	Not identifiable	13	13	10	0	0
	Evening	0	0	0	1	0
	Full-time	145	142	126	136	129
	Part-time	1090	1101	1092	1046	1047
<b>Engineering Total</b>		<b>1248</b>	<b>1256</b>	<b>1228</b>	<b>1183</b>	<b>1176</b>
<b>Food &amp; Agriculture</b>						
	Full-time	0	76	89	77	63
	Part-time	0	151	173	163	160
	Summer	0	1	1	0	0
<b>Food &amp; Agriculture Total</b>		<b>0</b>	<b>228</b>	<b>263</b>	<b>240</b>	<b>223</b>
<b>Humanities &amp; Education</b>						
	Not Identifiable	2	6	0	0	1
	Full-time	289	310	355	320	331
	Part-time	768	706	675	655	621
<b>Humanities &amp; Education Total</b>		<b>1059</b>	<b>1022</b>	<b>1030</b>	<b>975</b>	<b>953</b>
<b>Law</b>						
	Full-time	0	0	0	1	3
	Part-time	0	0	0	2	20
<b>Law Total</b>		<b>0</b>	<b>0</b>	<b>0</b>	<b>3</b>	<b>23</b>
<b>Medical Sciences</b>						
	Full-time	76	86	89	97	108
	Part-time	335	392	412	384	433
<b>Medical Sciences Total</b>		<b>411</b>	<b>478</b>	<b>501</b>	<b>481</b>	<b>541</b>
<b>Science &amp; Agriculture</b>						
	Not Identifiable	1	0	0	0	0
	Full-time	244	2	1	0	0
	Part-time	418	4	3	3	1
	Summer	1	0	0	0	0
<b>Science &amp; Agriculture Total</b>		<b>664</b>	<b>6</b>	<b>4</b>	<b>3</b>	<b>1</b>
<b>Science &amp; Technology</b>						
	Full-time	1	201	212	196	182
	Part-time	4	302	329	326	327
<b>Science &amp; Technology Total</b>		<b>5</b>	<b>503</b>	<b>541</b>	<b>522</b>	<b>509</b>
<b>Social Sciences</b>						
	Not Identifiable	3	3	0	0	0
	Evening	225	255	275	306	334
	Full-time	267	279	277	280	315
	Part-time	1901	2122	2110	2004	1846
<b>Social Sciences Total</b>		<b>2396</b>	<b>2659</b>	<b>2662</b>	<b>2590</b>	<b>2495</b>
<b>Graduate Total</b>		<b>5783</b>	<b>6152</b>	<b>6229</b>	<b>5997</b>	<b>5921</b>

## Total Enrolment by Student Level – 2011/2012 to 2015/2016

Total Enrolment by Student Level, Faculty and Session – 2011/2012 to 2015/2016						
Student Level and Faculty	Student Session	2011	2012	2013	2014	2015
<b>UNDERGRADUATE</b>						
<b>Engineering</b>						
	Not identifiable	2	3	8	4	0
	Full-time	1348	1402	1405	1425	1340
	Part-time	20	18	30	31	29
<b>Engineering Total</b>		<b>1370</b>	<b>1423</b>	<b>1443</b>	<b>1460</b>	<b>1369</b>
<b>Food &amp; Agriculture</b>						
	Not Identifiable	1	0	0	6	0
	Distance	0	0	0	1	0
	Evening	1	117	109	97	97
	Full-time	1	757	752	714	724
	Part-time	0	107	104	70	77
	Summer	0	2	0	0	0
<b>Food &amp; Agriculture Total</b>		<b>3</b>	<b>983</b>	<b>965</b>	<b>888</b>	<b>898</b>
<b>Humanities &amp; Education</b>						
	Not Identifiable	4	3	1	4	0
	Evening	0	0	0	0	1
	Full-time	1606	1485	1444	1268	1203
	Part-time	493	435	389	383	365
<b>Humanities &amp; Education Total</b>		<b>2103</b>	<b>1923</b>	<b>1834</b>	<b>1655</b>	<b>1569</b>
<b>Law</b>						
	Not Identifiable	1	1	0	0	0
	Full-time	250	324	303	299	325
<b>Law Total</b>		<b>251</b>	<b>325</b>	<b>303</b>	<b>299</b>	<b>325</b>
<b>Medical Sciences</b>						
	Not Identifiable	2	7	7	5	0
	Evening	0	0	1	1	1
	Full-time	1697	1933	2058	2106	2182
	Part-time	95	129	142	170	138
<b>Medical Sciences Total</b>		<b>1794</b>	<b>2069</b>	<b>2208</b>	<b>2282</b>	<b>2321</b>

## Total Enrolment by Student Level – 2011/2012 to 2015/2016

Total Enrolment by Student Level, Faculty and Session – 2011/2012 to 2015/2016						
Student Level and Faculty	Student Session	2011	2012	2013	2014	2015
<b>Science &amp; Agriculture</b>						
	Not Identifiable	12	0	0	0	0
	Evening	170	0	0	0	0
	Full-time	3112	0	0	0	0
	Part-time	275	0	0	0	0
<b>Science &amp; Agriculture Total</b>		<b>3569</b>	<b>0</b>	<b>0</b>	<b>0</b>	<b>0</b>
<b>Science &amp; Technology</b>						
	Not Identifiable	0	8	3	12	0
	Evening	0	58	33	21	13
	Full-time	2	2112	2032	1890	1971
	Part-time	0	145	121	98	95
	Summer	0	6	6	5	1
<b>Science &amp; Technology Total</b>		<b>2</b>	<b>2329</b>	<b>2195</b>	<b>2026</b>	<b>2080</b>
<b>Social Sciences</b>						
	Not Identifiable	9	8	17	13	0
	Evening	1265	1236	1228	1153	1102
	Full-time	2585	2624	2767	2574	2346
	Part-time	100	54	34	41	38
	Summer	4	2	2	1	0
<b>Social Sciences Total</b>		<b>3963</b>	<b>3924</b>	<b>4048</b>	<b>3782</b>	<b>3486</b>
<b>Undergraduate Total</b>		<b>13055</b>	<b>12976</b>	<b>12996</b>	<b>12392</b>	<b>12048</b>
<b>Grand Total</b>		<b>18838</b>	<b>19128</b>	<b>19225</b>	<b>18389</b>	<b>17969</b>

# Total Enrolment by Student Level – 2011/2012 to 2015/2016

**Table 2.3**

Total Enrolment by Level, Faculty and Degree Type – 2011/2012 to 2015/2016						
Student Level and Faculty	Degree	2011	2012	2013	2014	2015
<b>GRADUATE</b>						
<b>Engineering</b>						
	Doctorate	37	42	43	46	57
	Graduate Diploma	28	32	24	22	19
	Master of Philosophy	42	40	48	43	46
	Qualifying	1	1	0	0	0
	Taught Masters	1140	1141	1113	1072	1054
<b>Engineering Total</b>		<b>1248</b>	<b>1256</b>	<b>1228</b>	<b>1183</b>	<b>1176</b>
<b>Food &amp; Agriculture</b>						
	Doctorate	0	26	35	35	38
	Graduate Diploma	0	4	6	6	3
	Master of Philosophy	0	44	43	43	44
	Taught Masters	0	154	179	156	138
<b>Food &amp; Agriculture Total</b>		<b>0</b>	<b>228</b>	<b>263</b>	<b>240</b>	<b>223</b>
<b>Humanities &amp; Education</b>						
	Doctorate	73	85	95	99	99
	Graduate Certificate	48	45	22	23	32
	Graduate Diploma	212	226	254	259	275
	Master of Philosophy	185	188	171	144	124
	Taught Masters	541	478	488	450	423
<b>Humanities &amp; Education Total</b>		<b>1059</b>	<b>1022</b>	<b>1030</b>	<b>975</b>	<b>953</b>
<b>Law</b>						
	Graduate Diploma	0	0	0	0	2
	Taught Masters	0	0	0	3	21
<b>Law Total</b>		<b>0</b>	<b>0</b>	<b>0</b>	<b>3</b>	<b>23</b>

## Total Enrolment by Student Level – 2011/2012 to 2015/2016

Total Enrolment by Level, Faculty and Degree Type – 2011/2012 to 2015/2016						
Student Level and Faculty	Degree	2011	2012	2013	2014	2015
<b>Medical Sciences</b>						
	Doctor of Medicine	191	213	250	248	265
	Doctorate	20	20	17	18	16
	Graduate Diploma	64	87	84	83	103
	Master of Philosophy	24	26	25	21	20
	Taught Masters	112	132	125	111	137
<b>Medical Sciences Total</b>		<b>411</b>	<b>478</b>	<b>501</b>	<b>481</b>	<b>541</b>
<b>Science &amp; Agriculture</b>						
	Doctorate	86	0	0	0	0
	Graduate Certificate	2	0	0	0	0
	Graduate Diploma	3	0	0	0	0
	Master of Philosophy	136	0	0	0	0
	Taught Masters	437	6	4	3	1
<b>Science &amp; Agriculture Total</b>		<b>664</b>	<b>6</b>	<b>4</b>	<b>3</b>	<b>1</b>
<b>Science &amp; Technology</b>						
	Doctorate	2	72	77	76	80
	Graduate Diploma	0	1	2	1	0
	Master of Philosophy	2	100	86	77	76
	Taught Masters	1	330	376	368	353
<b>Science &amp; Technology Total</b>		<b>5</b>	<b>503</b>	<b>541</b>	<b>522</b>	<b>509</b>
<b>Social Sciences</b>						
	Doctorate	182	208	219	210	241
	Graduate Certificate	0	13	8	12	19
	Graduate Diploma	109	97	82	107	111
	Master of Philosophy	117	125	104	100	84
	Taught Masters	1988	2216	2249	2161	2040
<b>Social Sciences Total</b>		<b>2396</b>	<b>2659</b>	<b>2662</b>	<b>2590</b>	<b>2495</b>
<b>Graduate Total</b>		<b>5783</b>	<b>6152</b>	<b>6229</b>	<b>5997</b>	<b>5921</b>

## Total Enrolment by Student Level – 2011/2012 to 2015/2016

Total Enrolment by Level, Faculty and Degree Type – 2011/2012 to 2015/2016						
Student Level and Faculty	Degree	2011	2012	2013	2014	2015
<b>UNDERGRADUATE</b>						
<b>Engineering</b>						
	Certificate	13	8	10	22	16
	First Degree	1350	1404	1413	1429	1338
	Qualifying	7	11	20	9	15
<b>Engineering Total</b>		<b>1370</b>	<b>1423</b>	<b>1443</b>	<b>1460</b>	<b>1369</b>
<b>Food &amp; Agriculture</b>						
	Certificate	0	20	8	0	0
	Diploma	0	12	15	14	21
	First Degree	3	943	935	868	870
	Qualifying	0	8	7	6	7
<b>Food &amp; Agriculture Total</b>		<b>3</b>	<b>983</b>	<b>965</b>	<b>888</b>	<b>898</b>
<b>Humanities &amp; Education</b>						
	Certificate	322	272	255	226	245
	Diploma	33	35	29	10	7
	First Degree	1742	1614	1543	1419	1316
	Qualifying	6	2	7	0	1
<b>Humanities &amp; Education Total</b>		<b>2103</b>	<b>1923</b>	<b>1834</b>	<b>1655</b>	<b>1569</b>
<b>Law</b>						
	First Degree	251	325	303	299	325
<b>Law Total</b>		<b>251</b>	<b>325</b>	<b>303</b>	<b>299</b>	<b>325</b>
<b>Medical Sciences</b>						
	First Degree	1788	2066	2207	2280	2321
	Qualifying	6	3	1	2	0
<b>Medical Sciences Total</b>		<b>1794</b>	<b>2069</b>	<b>2208</b>	<b>2282</b>	<b>2321</b>
<b>Science &amp; Agriculture</b>						
	Certificate	35	0	0	0	0
	Diploma	13	0	0	0	0
	First Degree	3513	0	0	0	0
	Qualifying	8	0	0	0	0
<b>Science &amp; Agriculture Total</b>		<b>3569</b>	<b>0</b>	<b>0</b>	<b>0</b>	<b>0</b>
<b>Science &amp; Technology</b>						
	First Degree	2	2317	2183	2011	2063
	Qualifying	0	12	12	15	17
<b>Science &amp; Technology Total</b>		<b>2</b>	<b>2329</b>	<b>2195</b>	<b>2026</b>	<b>2080</b>
<b>Social Sciences</b>						
	Certificate	242	209	226	244	242
	Diploma	59	33	31	33	20
	First Degree	3637	3664	3773	3485	3207
	Qualifying	25	18	18	20	17
<b>Social Sciences Total</b>		<b>3963</b>	<b>3924</b>	<b>4048</b>	<b>3782</b>	<b>3486</b>
<b>Undergraduate Total</b>		<b>13055</b>	<b>12976</b>	<b>12996</b>	<b>12392</b>	<b>12048</b>
<b>Grand Total</b>		<b>18838</b>	<b>19128</b>	<b>19225</b>	<b>18389</b>	<b>17969</b>



## Total Enrolment by Student Level – 2011/2012 to 2015/2016

Table 2.4

New Student Admissions by Student Level, Faculty – 2011/2012 to 2015/2016						
Student Level	Faculty	2011	2012	2013	2014	2015
<b>GRADUATE</b>						
	Engineering	383	299	261	248	300
	Food & Agriculture	0	57	79	46	53
	Humanities & Education	463	474	415	421	441
	Law	0	0	0	3	19
	Medical Sciences	158	181	159	145	223
	Science & Agriculture	184	0	0	0	0
	Science & Technology	1	137	159	127	125
	Social Sciences	868	887	699	617	680
<b>Graduate Total</b>		<b>2057</b>	<b>2035</b>	<b>1772</b>	<b>1607</b>	<b>1841</b>
<b>UNDERGRADUATE</b>						
	Engineering	392	398	425	403	372
	Food & Agriculture	0	236	237	246	248
	Humanities & Education	618	521	563	557	504
	Law	124	166	145	118	117
	Medical Sciences	441	541	583	546	550
	Science & Agriculture	943	0	0	0	0
	Science & Technology	2	613	575	553	688
	Social Sciences	1144	1214	1346	1098	1064
<b>Undergraduate Total</b>		<b>3664</b>	<b>3689</b>	<b>3874</b>	<b>3521</b>	<b>3543</b>
<b>Grand Total</b>		<b>5721</b>	<b>5724</b>	<b>5646</b>	<b>5128</b>	<b>5384</b>

## Demographic Profile

In terms of overall trends in enrolment, for the period 2011/2012 to 2015/2016, the following was noted:

- Females outnumbered males at all levels of enrolment at The UWI St. Augustine Campus. The trends suggest that for the groups examined, there were on average 2 females to 1 male. This sex ratio did not experience any significant change over the period examined.
- The undergraduate student population was quite youthful as it was mainly comprised of persons under the age of 24 years.
- The undergraduate student population gravitated to more Full-time study. It is observed that over the five year period, the proportion of students who enrolled on a Full-time basis increased, while the students enrolling on an evening and Part-time basis indicated a marginal decline.
- Trinidad and Tobago nationals comprised an annual average of 91% of the student enrolment. On average those students whose nationality were from the contributing countries represented 97% while those from non-contributing countries were only 3%.



**Table 3.1**

Total Enrolment by Level, Faculty and Sex – 2011/2012 to 2015/2016						
Student Level and Faculty	Sex	2011	2012	2013	2014	2015
<b>GRADUATE</b>						
<b>Engineering</b>						
	F	553	567	552	507	510
	M	695	689	676	676	666
<b>Engineering Total</b>		<b>1248</b>	<b>1256</b>	<b>1228</b>	<b>1183</b>	<b>1176</b>
<b>Food &amp; Agriculture</b>						
	F	0	119	145	137	134
	M	0	109	118	103	89
<b>Food &amp; Agriculture Total</b>		<b>0</b>	<b>228</b>	<b>263</b>	<b>240</b>	<b>223</b>
<b>Humanities &amp; Education</b>						
	F	801	772	803	750	738
	M	258	250	227	225	214
	N	0	0	0	0	1
<b>Humanities &amp; Education Total</b>		<b>1059</b>	<b>1022</b>	<b>1030</b>	<b>975</b>	<b>953</b>
<b>Law</b>						
	F	0	0	0	3	18
	M	0	0	0	0	5
<b>Law Total</b>		<b>0</b>	<b>0</b>	<b>0</b>	<b>3</b>	<b>23</b>
<b>Medical Sciences</b>						
	F	229	293	297	289	343
	M	182	185	204	192	198
<b>Medical Sciences Total</b>		<b>411</b>	<b>478</b>	<b>501</b>	<b>481</b>	<b>541</b>
<b>Science &amp; Agriculture</b>						
	F	361	3	2	1	1
	M	303	3	2	2	0
<b>Science &amp; Agriculture Total</b>		<b>664</b>	<b>6</b>	<b>4</b>	<b>3</b>	<b>1</b>
<b>Science &amp; Technology</b>						
	F	2	279	290	275	280
	M	3	224	251	247	229
<b>Science &amp; Technology Total</b>		<b>5</b>	<b>503</b>	<b>541</b>	<b>522</b>	<b>509</b>
<b>Social Sciences</b>						
	F	1563	1755	1728	1689	1630
	M	833	904	934	901	865
<b>Social Sciences Total</b>		<b>2396</b>	<b>2659</b>	<b>2662</b>	<b>2590</b>	<b>2495</b>
<b>Graduate Total</b>		<b>5783</b>	<b>6152</b>	<b>6229</b>	<b>5997</b>	<b>5921</b>

# Demographic Profile

Total Enrolment by Level, Faculty and Sex – 2011/2012 to 2015/2016						
Student Level and Faculty	Sex	2011	2012	2013	2014	2015
<b>UNDERGRADUATE</b>						
<b>Engineering</b>						
	F	430	445	439	443	400
	M	940	978	1004	1017	969
<b>Engineering Total</b>		<b>1370</b>	<b>1423</b>	<b>1443</b>	<b>1460</b>	<b>1369</b>
<b>Food &amp; Agriculture</b>						
	F	2	644	622	574	585
	M	1	339	342	314	313
	N	0	0	1	0	0
<b>Food &amp; Agriculture Total</b>		<b>3</b>	<b>983</b>	<b>965</b>	<b>888</b>	<b>898</b>
<b>Humanities &amp; Education</b>						
	F	1628	1502	1428	1292	1207
	M	475	421	406	363	362
<b>Humanities &amp; Education Total</b>		<b>2103</b>	<b>1923</b>	<b>1834</b>	<b>1655</b>	<b>1569</b>
<b>Law</b>						
	F	189	236	217	206	230
	M	62	89	86	93	95
<b>Law Total</b>		<b>251</b>	<b>325</b>	<b>303</b>	<b>299</b>	<b>325</b>
<b>Medical Sciences</b>						
	F	1216	1427	1548	1608	1627
	M	578	642	660	674	694
<b>Medical Sciences Total</b>		<b>1794</b>	<b>2069</b>	<b>2208</b>	<b>2282</b>	<b>2321</b>
<b>Science &amp; Agriculture</b>						
	F	2032	0	0	0	0
	M	1537	0	0	0	0
<b>Science &amp; Agriculture Total</b>		<b>3569</b>	<b>0</b>	<b>0</b>	<b>0</b>	<b>0</b>
<b>Science &amp; Technology</b>						
	F	1	1251	1184	1124	1134
	M	1	1078	1010	902	946
	N	0	0	1	0	0
<b>Science &amp; Technology Total</b>		<b>2</b>	<b>2329</b>	<b>2195</b>	<b>2026</b>	<b>2080</b>
<b>Social Sciences</b>						
	F	2927	2901	2893	2697	2490
	M	1035	1021	1151	1083	996
	N	1	2	4	2	0
<b>Social Sciences Total</b>		<b>3963</b>	<b>3924</b>	<b>4048</b>	<b>3782</b>	<b>3486</b>
<b>Undergraduate Total</b>		<b>13055</b>	<b>12976</b>	<b>12996</b>	<b>12392</b>	<b>12048</b>
<b>Grand Total</b>		<b>18838</b>	<b>19128</b>	<b>19225</b>	<b>18389</b>	<b>17969</b>

**Table 3.2**

Total Enrolment by Student Level, Sex and Age Groups – 2011/2012 to 2015/2016							
Student Level	Sex	Age Group	2011	2012	2013	2014	2015
<b>GRADUATE</b>							
	<b>Female</b>						
		0 - 24	468	431	386	319	311
		25 - 34	1747	1998	2076	1996	1998
		35 - 44	689	768	765	758	797
		45 - 54	452	443	446	437	410
		55+	153	148	144	141	138
	<b>Female Total</b>		<b>3509</b>	<b>3788</b>	<b>3817</b>	<b>3651</b>	<b>3654</b>
	<b>Male</b>						
		0 - 24	224	219	191	172	171
		25 - 34	1112	1212	1258	1194	1165
		35 - 44	532	518	548	585	559
		45 - 54	300	304	296	273	258
		55+	106	111	119	122	114
	<b>Male Total</b>		<b>2274</b>	<b>2364</b>	<b>2412</b>	<b>2346</b>	<b>2267</b>
<b>Graduate Total</b>			<b>5783</b>	<b>6152</b>	<b>6229</b>	<b>5997</b>	<b>5921</b>
<b>UNDERGRADUATE</b>							
	<b>Female</b>						
		0 - 24	5885	5997	5974	5837	5680
		25 - 34	1541	1535	1519	1364	1292
		35 - 44	587	536	512	481	466
		45 - 54	348	272	259	212	187
		55+	64	66	67	50	48
	<b>Female Total</b>		<b>8425</b>	<b>8406</b>	<b>8331</b>	<b>7944</b>	<b>7673</b>
	<b>Male</b>						
		0 - 24	3492	3487	3594	3479	3479
		25 - 34	748	741	770	692	634
		35 - 44	248	227	178	161	169
		45 - 54	108	81	79	75	64
		55+	33	32	38	39	29
	<b>Male Total</b>		<b>4629</b>	<b>4568</b>	<b>4659</b>	<b>4446</b>	<b>4375</b>
	<b>Not Identifiable</b>						
		0 - 24	0	1	2	2	0
		25 - 34	0	0	3	0	0
		35 - 44	1	1	0	0	0
		45 - 54	0	0	1	0	0
	<b>Not Identifiable Total</b>		<b>1</b>	<b>2</b>	<b>6</b>	<b>2</b>	<b>0</b>
<b>Undergraduate Total</b>			<b>13055</b>	<b>12976</b>	<b>12996</b>	<b>12392</b>	<b>12048</b>
<b>Grand Total</b>			<b>18838</b>	<b>19128</b>	<b>19225</b>	<b>18389</b>	<b>17969</b>

**Table 3.3**

Enrolment by Student Level and Contributing Countries – 2011/2012 to 2015/2016						
Student Level	Country of Nationality	2011	2012	2013	2014	2015
<b>GRADUATE</b>						
	Not Identifiable	0	2	0	1	2
	ANGUILLA	1	0	1	1	1
	ANTIGUA AND BARBUDA	3	7	9	9	8
	BARBADOS	33	34	44	38	38
	BELIZE	14	13	17	8	13
	BERMUDA	1	0	0	0	1
	BRITISH VIRGIN ISLANDS	9	6	0	0	0
	DOMINICA	7	12	16	13	15
	GRENADA	8	16	20	20	17
	JAMAICA	94	92	75	71	69
	MONTSERRAT	2	2	0	0	0
	ST KITTS AND NEVIS	1	3	6	3	1
	ST LUCIA	39	42	45	39	44
	ST VINCENT AND GRENADINES	26	26	34	29	35
	THE BAHAMAS	18	6	5	8	7
	TRINIDAD AND TOBAGO	5213	5555	5635	5454	5377
<b>Graduate Total</b>		<b>5469</b>	<b>5816</b>	<b>5907</b>	<b>5694</b>	<b>5628</b>
<b>UNDERGRADUATE</b>						
	Not Identifiable		3	8	31	0
	ANGUILLA	1	0	0	0	0
	ANTIGUA AND BARBUDA	15	16	16	17	25
	BARBADOS	169	176	187	180	157
	BELIZE	19	18	24	15	14
	BERMUDA	1	1	1	1	1
	BRITISH VIRGIN ISLANDS	7	4	3	4	5
	CAYMAN ISLANDS	1	1	1	1	1
	DOMINICA	32	24	26	22	29
	GRENADA	46	57	63	61	62
	JAMAICA	112	117	129	128	106
	MONTSERRAT	3	2	5	4	3
	ST KITTS AND NEVIS	22	22	20	26	17
	ST LUCIA	106	91	94	93	96
	ST VINCENT AND GRENADINES	132	120	109	90	104
	THE BAHAMAS	79	96	96	88	81
	TRINIDAD AND TOBAGO	12099	12013	11993	11474	11160
	TURKS AND CAICOS ISLANDS	2	2	2	2	3
<b>Undergraduate Total</b>		<b>12846</b>	<b>12763</b>	<b>12777</b>	<b>12237</b>	<b>11864</b>
<b>Grand Total</b>		<b>18315</b>	<b>18579</b>	<b>18684</b>	<b>17931</b>	<b>17492</b>

**Table 3.4**

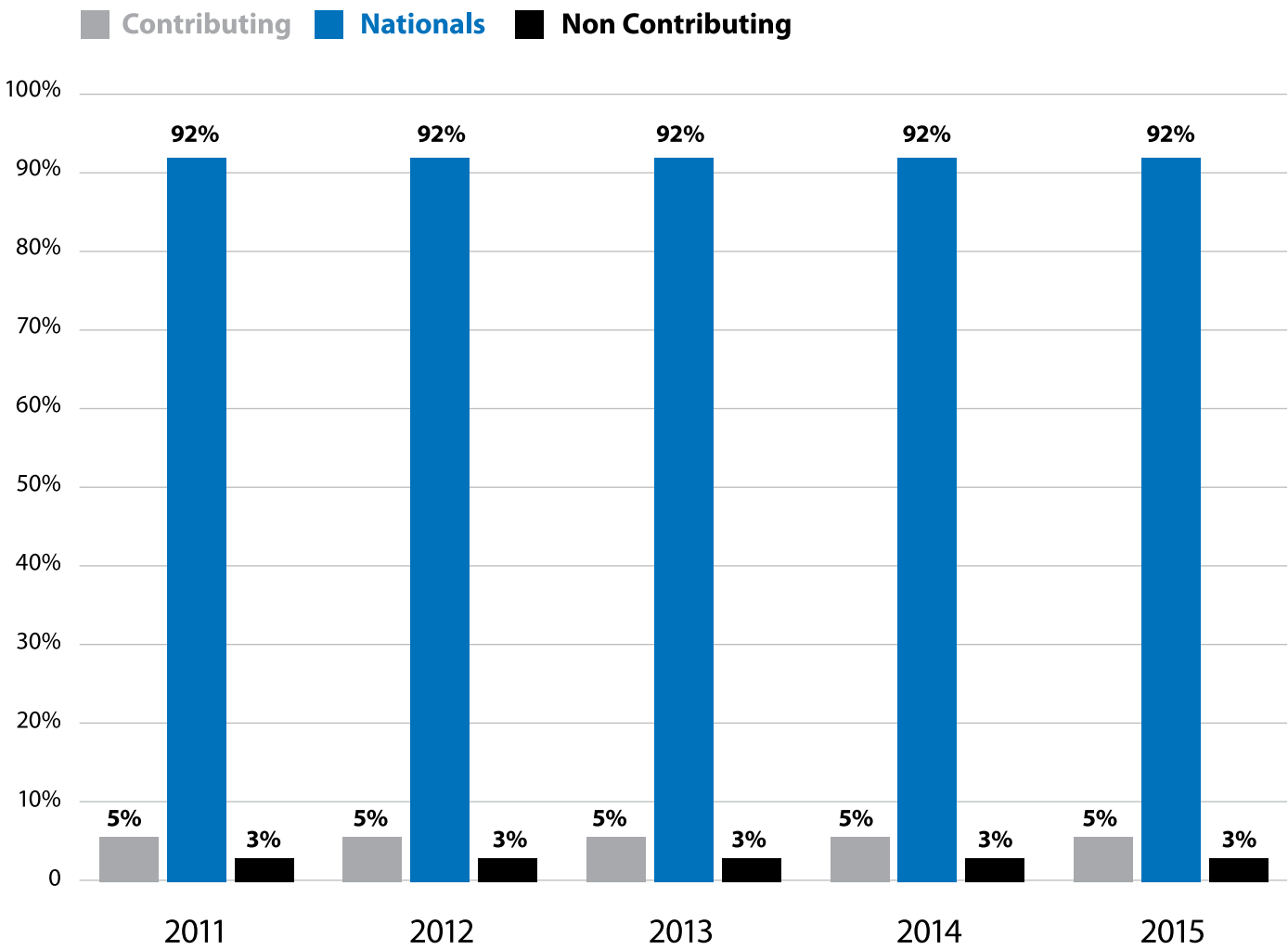
<b>Enrolment by Student Level and Non Contributing Countries – 2011/2012 to 2015/2016</b>					
<b>Country of Nationality</b>	<b>2011</b>	<b>2012</b>	<b>2013</b>	<b>2014</b>	<b>2015</b>
<b>GRADUATE</b>					
Not Identifiable	0	2	0	1	2
ARGENTINA	1	1	1	0	0
AUSTRALIA	1	1	1	0	0
AUSTRIA	0	0	1	1	0
BANGLADESH	1	2	2	1	0
BELGIUM	0	0	1	0	0
BRAZIL	1	1	1	0	1
CAMEROON	1	0	0	1	1
CANADA	9	7	10	10	11
CHINA	0	0	1	2	0
COLOMBIA	2	2	2	3	5
CUBA	0	0	1	1	1
DOMINICAN REPUBLIC	0	0	0	1	1
FIJI	0	1	3	3	3
FINLAND	0	0	1	1	1
FRANCE	1	1	1	0	1
GERMANY	2	2	1	2	2
GHANA	1	1	2	5	3
GUYANA	177	170	166	140	140
HAITI	0	4	5	4	5
HONG KONG	1	0	0	0	0
INDIA	40	44	40	33	30
INDONESIA	0	0	1	1	1
JAPAN	1	1	1	1	1
NETHERLANDS	0	0	0	0	1
NIGERIA	27	32	24	22	15
PAPUA NEW GUINEA	0	0	0	0	2
REPUBLIC OF IRELAND (EIRE)	1	2	1	2	0
SAMOA (WESTERN SAMOA)	0	2	2	3	4
SOLOMON ISLANDS	0	1	2	3	9
SPAIN	1	0	1	2	2
SRI LANKA	1	1	1	0	0
SURINAME	10	19	21	28	18
TONGA	1	1	0	1	1
TUNISIA	0	2	2	1	2
TUVALU	1	1	0	1	0
UGANDA	1	1	0	0	0
UNITED KINGDOM	14	11	8	9	8
UNITED STATES OF AMERICA	12	18	14	16	16
VANUATU	1	1	1	1	2
VENEZUELA	4	5	3	4	5
YUGOSLAVIA	0	0	0	0	1
ZIMBABWE (FORMERLY RHODESIA)	1	1	0	0	0
<b>Graduate Total</b>	<b>314</b>	<b>338</b>	<b>322</b>	<b>304</b>	<b>295</b>

Enrolment by Student Level and Non Contributing Countries – 2011/2012 to 2015/2016					
Country of Nationality	2011	2012	2013	2014	2015
<b>UNDERGRADUATE</b>					
Not Identifiable	0	3	8	31	0
BOTSWANA	56	44	37	16	7
BRAZIL	1	0	1	0	4
CAMEROON	0	1	1	0	0
CANADA	19	20	17	15	12
CHILE	1	0	0	0	0
CHINA	2	3	4	5	5
COLOMBIA	36	40	32	4	9
CUBA	0	0	0	0	1
CURACAO	0	1	1	1	0
ECUADOR	1	0	0	0	0
EL SALVADOR	1	0	0	0	0
FRANCE	2	0	0	0	0
GERMANY	1	1	1	0	0
GHANA	0	0	1	1	3
GUADELOUPE	1	0	0	0	2
GUINEA-BISSAU	0	0	0	0	1
GUYANA	17	21	27	28	32
HAITI	1	1	2	0	1
INDIA	9	11	14	19	17
JORDAN	0	0	0	1	0
KENYA	0	1	1	1	1
MARTINIQUE	0	0	3	0	1
MEXICO	0	1	0	0	1
NEW ZEALAND	0	0	0	0	1
NIGERIA	4	4	6	7	11
PHILIPPINES	0	0	2	2	1
REPUBLIC OF IRELAND (EIRE)	0	0	0	1	1
RUSSIA	0	0	0	1	1
SAUDI ARABIA	0	0	1	1	1
SIERRA LEONE	0	0	0	0	1
SOUTH KOREA	2	1	2	2	2
SPAIN	0	2	1	0	0
SRI LANKA	0	0	0	1	1
SURINAME	1	0	0	0	2
TANZANIA	0	1	1	1	1
TONGA	1	3	2	3	0
TUNISIA	1	0	0	1	0
TURKEY	0	0	0	0	1
UGANDA	1	1	1	0	0
UNITED KINGDOM	6	7	9	6	8
UNITED STATES OF AMERICA	39	35	35	27	34
VENEZUELA	5	11	15	9	21
VIETNAM	0	1	0	0	0
YUGOSLAVIA	0	1	1	1	0
ZIMBABWE (FORMERLY RHODESIA)	1	1	1	1	0
<b>Undergraduate Total</b>	<b>209</b>	<b>216</b>	<b>227</b>	<b>186</b>	<b>184</b>
<b>Grand Total</b>	<b>523</b>	<b>554</b>	<b>549</b>	<b>490</b>	<b>479</b>



# Demographic Profile

Figure 3.a: Enrolment by Nationality – 2011/2012 to 2015/2016



## Faculty Trends

At the level of faculty, the following observations were made (excluding the faculty of Science and Agriculture reported on only for 2011):

- Enrolment levels at the undergraduate level were relatively constant in the faculties of Engineering, Food and Agriculture and Law where there was marginal increment.
- The faculties of Humanities and Education and Science and Technology experienced decreasing enrolment trends at both the undergraduate and postgraduate levels.
- The faculty of Medical Sciences experienced increasing growth at both undergraduate and postgraduate levels.

HIGHEST AVERAGE GROWTH  
IN NEW STUDENT ADMISSIONS

FACULTY OF  
MEDICAL SCIENCES

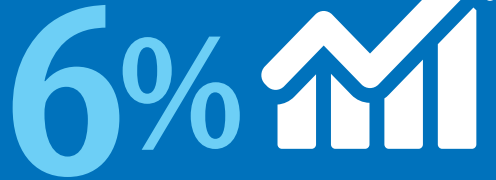


Figure 4.a: Undergraduate Enrolment by Faculty – 2011/2012 to 2015/2016

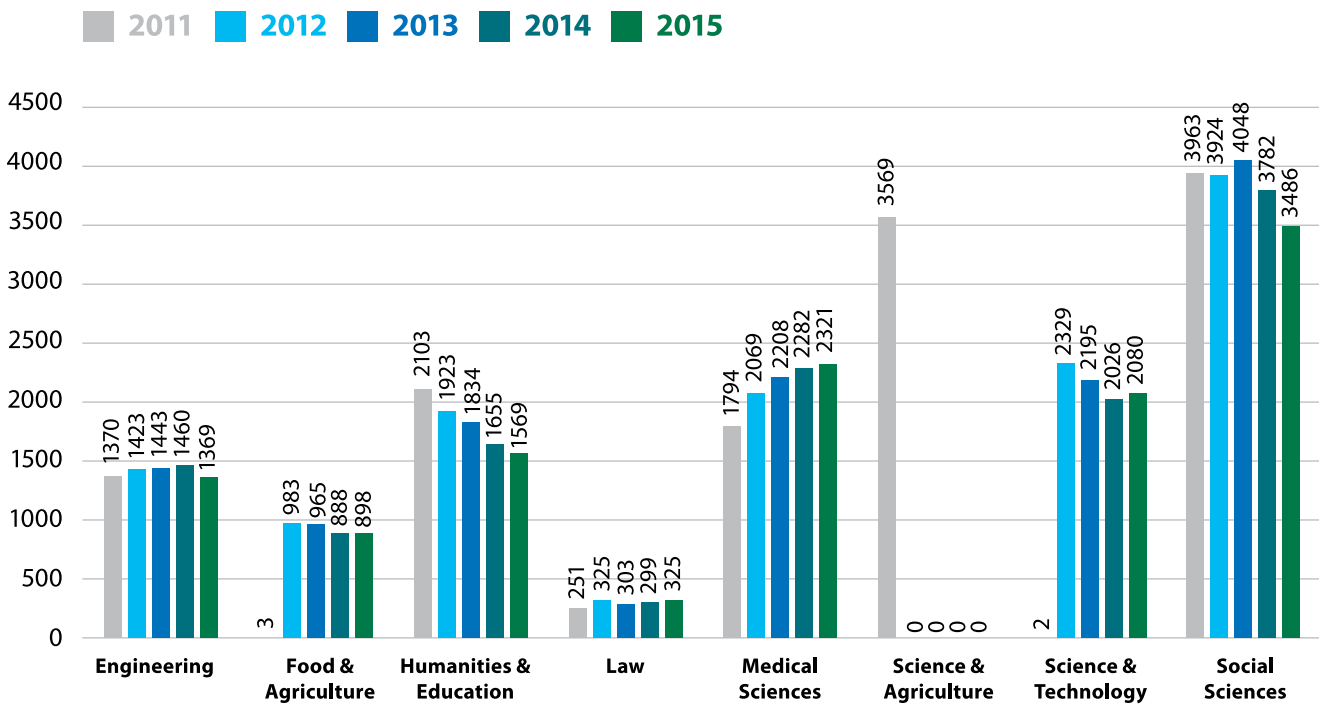
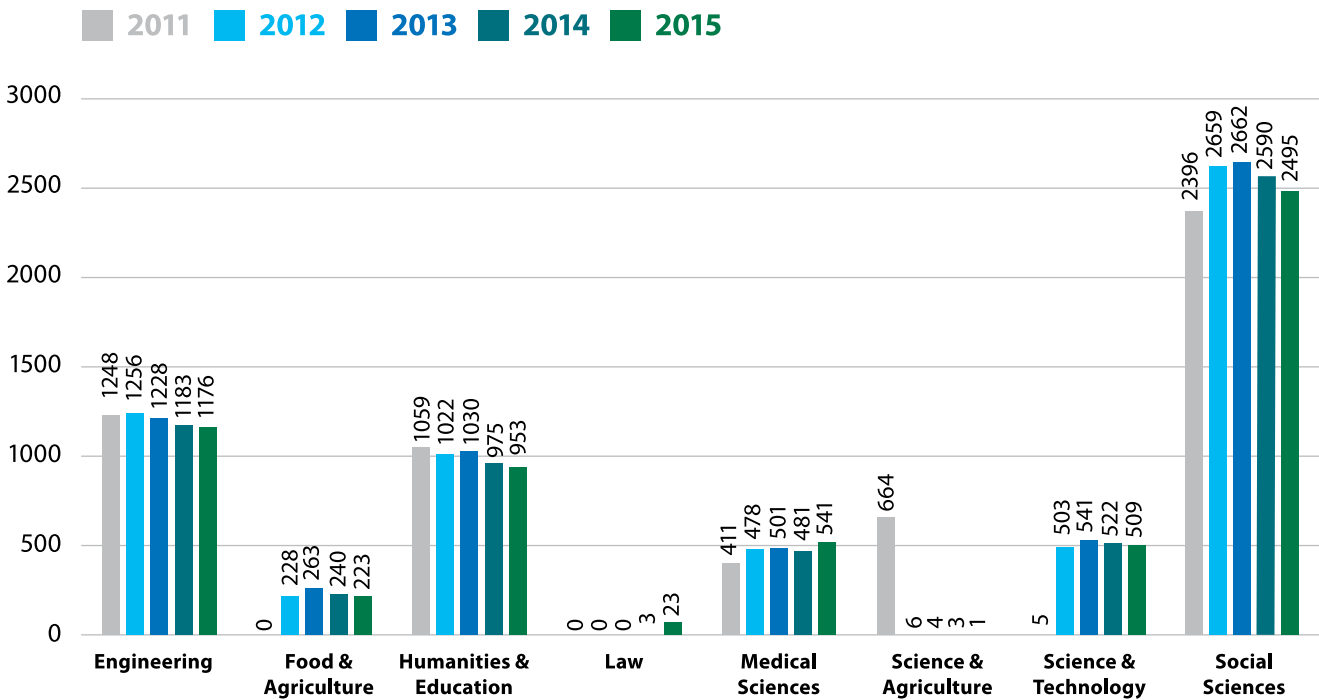


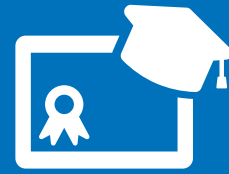
Figure 4.b: Postgraduate Enrolment by Faculty – 2011/2012 to 2015/2016



## Trends in Graduate Output

This section will examine graduate output in respect of demographics, faculty and degree honours. Below are some overall trends that have been observed in relation to graduate output over the period 2011/2012 to 2015/2016:

- Graduate output remained at approximately 4000 students each year between 2011/2012 to 2015/2016. Over this period, undergraduates represented approximately 70% of the degrees awarded while postgraduates comprised of 30% of the graduating population.
- In terms of sex, females outnumbered males at both the Undergraduate and Postgraduate levels. Moreover, the sex ratio did not experience any drastic changes over the period examined.
- When comparing the award of degrees by faculty, there were notable differences. The faculty of Social Sciences awarded the highest number of degrees.
- The faculty of Humanities and Education recorded the highest number of Postgraduate degrees awarded followed by the faculty of Engineering with the second highest.



**GRADUATING POPULATION  
DEGREES AWARDED**

**UNDER GRADUATES  
70%**

**POST GRADUATES  
30%**



## Trends in Graduate Output

**Table 5.1**

Output of Graduates by Student Level and Faculty - 2011/2012 to 2015/2016						
Student Level	Faculty	2011	2012	2013	2014	2015
Graduate	Engineering	164	183	184	173	199
	Food & Agriculture	0	19	24	35	39
	Humanities & Education	418	341	370	400	337
	Law	0	0	0	0	6
	Medical Sciences	89	107	124	87	112
	Science & Agriculture	71	14	1	5	3
	Science & Technology	1	62	80	90	71
	Social Sciences	425	512	457	356	704
	<b>Graduate Total</b>		<b>1168</b>	<b>1238</b>	<b>1240</b>	<b>1146</b>
Undergraduate	Engineering	280	315	286	317	354
	Food & Agriculture	1	193	230	170	196
	Humanities & Education	545	471	513	397	384
	Law	0	70	88	62	90
	Medical Sciences	439	546	567	609	396
	Science & Agriculture	691	2	1	2	3
	Science & Technology	0	533	455	377	379
	Social Sciences	940	860	936	867	856
	<b>Undergraduate Total</b>		<b>2896</b>	<b>2990</b>	<b>3076</b>	<b>2801</b>
<b>Grand Total</b>		<b>4064</b>	<b>4228</b>	<b>4316</b>	<b>3947</b>	<b>4129</b>

**Table 5.2**

Output of Graduates by Level and Gender – 2011/2012 to 2015/2016						
Student Level	Sex	2011	2012	2013	2014	2015
Graduate	Female	765	843	854	766	959
	Male	403	395	386	380	512
<b>Graduate Total</b>		<b>1168</b>	<b>1238</b>	<b>1240</b>	<b>1146</b>	<b>1471</b>
Undergraduate	Female	2002	2020	2058	1922	1803
	Male	894	969	1018	878	855
	Not Identifiable	0	1	0	1	0
<b>Undergraduate Total</b>		<b>2896</b>	<b>2990</b>	<b>3076</b>	<b>2801</b>	<b>2658</b>
<b>Grand Total</b>		<b>4064</b>	<b>4228</b>	<b>4316</b>	<b>3947</b>	<b>4129</b>

# Trends in Graduate Output

**Table 5.3**

Output of Undergraduates by Degree Type and Degree Honours – 2011/2012 to 2015/2016							
Faculty	Degree	Degree Honor	2011	2012	2013	2014	2015
<b>UNDERGRADUATE</b>							
Engineering	Certificate	Pass	10	7	4	10	11
	<b>Certificate Total</b>		<b>10</b>	<b>7</b>	<b>4</b>	<b>10</b>	<b>11</b>
	First Degree		0	0	0	0	1
		First Class Honours	37	51	37	61	53
		Pass	32	46	43	36	38
		Second Class Honours (Lower)	107	119	121	114	142
		Second Class Honours (Upper)	80	82	67	87	96
		Third Class Honours	14	10	14	9	13
	<b>First Degree Total</b>		<b>270</b>	<b>308</b>	<b>282</b>	<b>307</b>	<b>343</b>
<b>Engineering Total</b>			<b>280</b>	<b>315</b>	<b>286</b>	<b>317</b>	<b>354</b>
Food & Agriculture	Certificate	Pass	0	5	2	0	0
	<b>Certificate Total</b>		<b>0</b>	<b>5</b>	<b>2</b>	<b>0</b>	<b>0</b>
	Diploma	Distinction	0	10	12	2	8
		Pass	0	1	2	12	7
	<b>Diploma Total</b>		<b>0</b>	<b>11</b>	<b>14</b>	<b>14</b>	<b>15</b>
	First Degree	First Class Honours	0	16	17	10	7
		Pass	1	45	42	29	52
		Second Class Honours (Lower)	0	75	101	73	71
		Second Class Honours (Upper)	0	41	54	44	51
	<b>First Degree Total</b>		<b>1</b>	<b>177</b>	<b>214</b>	<b>156</b>	<b>181</b>
<b>Food &amp; Agriculture Total</b>			<b>1</b>	<b>193</b>	<b>230</b>	<b>170</b>	<b>196</b>
Humanities & Education	Certificate	Distinction	7	5	2	0	0
		Pass	105	109	101	80	95
		Second Class Honours (Lower)	1	0	0	0	0
	<b>Certificate Total</b>		<b>113</b>	<b>114</b>	<b>103</b>	<b>80</b>	<b>95</b>
	Diploma	Pass	25	4	27	0	4
	<b>Diploma Total</b>		<b>25</b>	<b>4</b>	<b>27</b>	<b>0</b>	<b>4</b>
	First Degree	First Class Honours	47	32	55	45	35
		Pass	45	58	52	44	36
		Second Class Honours (Lower)	177	153	150	119	100
		Second Class Honours (Upper)	138	110	126	109	114
	<b>First Degree Total</b>		<b>407</b>	<b>353</b>	<b>383</b>	<b>317</b>	<b>285</b>
<b>Humanities &amp; Education Total</b>			<b>545</b>	<b>471</b>	<b>513</b>	<b>397</b>	<b>384</b>
Law	First Degree	First Class Honours	0	9	9	6	6
		Pass	0	9	25	10	25
		Second Class Honours (Lower)	0	40	30	14	37
		Second Class Honours (Upper)	0	12	24	32	22
	<b>First Degree Total</b>		<b>0</b>	<b>70</b>	<b>88</b>	<b>62</b>	<b>90</b>
<b>Law Total</b>			<b>0</b>	<b>70</b>	<b>88</b>	<b>62</b>	<b>90</b>

## Trends in Graduate Output

Output of Undergraduates by Degree Type and Degree Honours – 2011/2012 to 2015/2016							
Faculty	Degree	Degree Honor	2011	2012	2013	2014	2015
Medical Sciences	First Degree		0	4	0	0	1
		Distinction	5	5	7	26	37
		First Class Honours	11	33	34	32	13
		Honours	35	23	57	88	66
		Pass	327	371	400	356	143
		Second Class Honours (Lower)	27	56	21	34	65
		Second Class Honours (Upper)	34	54	48	73	71
	<b>First Degree Total</b>		<b>439</b>	<b>546</b>	<b>567</b>	<b>609</b>	<b>396</b>
<b>Medical Sciences Total</b>		<b>439</b>	<b>546</b>	<b>567</b>	<b>609</b>	<b>396</b>	
Science & Agriculture	Certificate	Pass	14	0	0	0	0
		<b>Certificate Total</b>	<b>14</b>	<b>0</b>	<b>0</b>	<b>0</b>	<b>0</b>
	Diploma	Distinction	2	0	0	0	0
		Pass	11	0	0	0	0
	<b>Diploma Total</b>		<b>13</b>	<b>0</b>	<b>0</b>	<b>0</b>	<b>0</b>
	First Degree	First Class Honours	22	0	0	0	0
		Pass	261	0	0	2	2
		Second Class Honours (Lower)	290	2	1	0	0
Second Class Honours (Upper)		91	0	0	0	1	
<b>First Degree Total</b>		<b>664</b>	<b>2</b>	<b>1</b>	<b>2</b>	<b>3</b>	
<b>Science &amp; Agriculture Total</b>		<b>691</b>	<b>2</b>	<b>1</b>	<b>2</b>	<b>3</b>	
Science & Technology	First Degree		0	1	0	0	0
		First Class Honours	0	30	30	33	34
		Pass	0	196	172	137	120
		Second Class Honours (Lower)	0	248	200	144	142
		Second Class Honours (Upper)	0	59	53	63	83
	<b>First Degree Total</b>		<b>0</b>	<b>533</b>	<b>455</b>	<b>377</b>	<b>379</b>
<b>Science &amp; Technology Total</b>		<b>0</b>	<b>533</b>	<b>455</b>	<b>377</b>	<b>379</b>	
Social Sciences	Certificate		0	1	0	0	0
		Pass	125	110	96	93	110
	<b>Certificate Total</b>		<b>125</b>	<b>111</b>	<b>96</b>	<b>93</b>	<b>110</b>
	Diploma	Distinction	2	1	0	0	0
		Honours	1	0	0	0	0
		Pass	20	10	7	12	10
	<b>Diploma Total</b>		<b>23</b>	<b>11</b>	<b>7</b>	<b>12</b>	<b>10</b>
	First Degree		1	1	2	0	1
		First Class Honours	57	54	77	86	49
		Pass	181	163	167	135	166
Second Class Honours (Lower)		371	339	391	311	274	
Second Class Honours (Upper)		182	181	197	230	246	
<b>First Degree Total</b>		<b>792</b>	<b>738</b>	<b>833</b>	<b>762</b>	<b>736</b>	
<b>Social Sciences Total</b>		<b>940</b>	<b>860</b>	<b>936</b>	<b>867</b>	<b>856</b>	
<b>Undergraduate Total</b>		<b>2896</b>	<b>2990</b>	<b>3076</b>	<b>2801</b>	<b>2658</b>	

# Trends in Graduate Output

**Table 5.4**

Output of Postgraduates by Degree Type and Degree Honours – 2011/2012 to 2015/2016								
Faculty	Degree	Degree Honor	2011	2012	2013	2014	2015	
<b>GRADUATE</b>								
Engineering	Doctorate	High Commendation	1	1	1	1	1	
		Pass	1	4	0	1	3	
	<b>Doctorate Total</b>		<b>2</b>	<b>5</b>	<b>1</b>	<b>2</b>	<b>4</b>	
	Graduate Diploma	Distinction	0	0	4	3	2	
		Pass	21	26	25	8	13	
		<b>Graduate Diploma Total</b>	<b>21</b>	<b>26</b>	<b>29</b>	<b>12</b>	<b>15</b>	
	Master of Philosophy	Pass	5	0	5	2	1	
		<b>Master of Philosophy Total</b>	<b>5</b>	<b>0</b>	<b>5</b>	<b>2</b>	<b>1</b>	
	Taught Masters	Distinction	26	32	41	34	31	
		Pass	110	120	108	122	148	
		<b>Taught Masters Total</b>	<b>136</b>	<b>152</b>	<b>149</b>	<b>157</b>	<b>179</b>	
	<b>Engineering Total</b>			<b>164</b>	<b>183</b>	<b>184</b>	<b>173</b>	<b>199</b>
	Food & Agriculture	Doctorate	High Commendation	0	0	2	0	0
			Pass	0	0	0	2	2
		<b>Doctorate Total</b>		<b>0</b>	<b>0</b>	<b>2</b>	<b>2</b>	<b>2</b>
Graduate Diploma		Distinction	0	0	1	1	0	
		Pass	0	1	1	4	4	
<b>Graduate Diploma Total</b>		<b>0</b>	<b>1</b>	<b>2</b>	<b>5</b>	<b>4</b>		
Master of Philosophy		Pass	0	6	6	4	3	
		<b>Master of Philosophy Total</b>	<b>0</b>	<b>6</b>	<b>6</b>	<b>4</b>	<b>3</b>	
Taught Masters		Distinction	0	0	6	7	11	
		Pass	0	12	8	17	19	
<b>Taught Masters Total</b>		<b>0</b>	<b>12</b>	<b>14</b>	<b>24</b>	<b>30</b>		
<b>Food &amp; Agriculture Total</b>			<b>0</b>	<b>19</b>	<b>24</b>	<b>35</b>	<b>39</b>	
Humanities & Education	Doctorate	High Commendation	0	1	2	1	0	
		Pass	5	6	4	5	2	
	<b>Doctorate Total</b>		<b>5</b>	<b>7</b>	<b>6</b>	<b>6</b>	<b>2</b>	
	Graduate Certificate	Distinction	0	27	0	0	0	
		Pass	45	16	19	20	26	
	<b>Graduate Certificate Total</b>		<b>45</b>	<b>43</b>	<b>19</b>	<b>20</b>	<b>26</b>	
	Graduate Diploma	Distinction	24	34	51	34	37	
		Pass	155	153	176	176	184	
		<b>Graduate Diploma Total</b>	<b>183</b>	<b>187</b>	<b>228</b>	<b>210</b>	<b>221</b>	
	Master of Philosophy	Pass	3	6	11	7	11	
		<b>Master of Philosophy Total</b>	<b>3</b>	<b>6</b>	<b>11</b>	<b>7</b>	<b>11</b>	
	Taught Masters	Distinction	40	16	23	36	17	
High Commendation		0	1	0	2	1		
Pass		142	81	83	118	59		
<b>Taught Masters Total</b>		<b>182</b>	<b>98</b>	<b>106</b>	<b>157</b>	<b>77</b>		
<b>Humanities &amp; Education Total</b>			<b>418</b>	<b>341</b>	<b>370</b>	<b>400</b>	<b>337</b>	



## Trends in Graduate Output

Output of Postgraduates by Degree Type and Degree Honours – 2011/2012 to 2015/2016							
Faculty	Degree	Degree Honor	2011	2012	2013	2014	2015
Law	Graduate Diploma	Pass	0	0	0	0	1
	<b>Graduate Diploma Total</b>		<b>0</b>	<b>0</b>	<b>0</b>	<b>0</b>	<b>1</b>
	Taught Masters	Distinction	0	0	0	0	1
		Pass	0	0	0	0	4
	<b>Taught Masters Total</b>		<b>0</b>	<b>0</b>	<b>0</b>	<b>0</b>	<b>5</b>
<b>Law Total</b>			<b>0</b>	<b>0</b>	<b>0</b>	<b>0</b>	<b>6</b>
Medical Sciences	Doctor of Medicine	Pass	28	14	21	30	19
	<b>Doctor of Medicine Total</b>		<b>28</b>	<b>14</b>	<b>21</b>	<b>30</b>	<b>19</b>
	Doctorate	High Commendation	1	1	0	0	1
		Pass	3	1	1	1	1
	<b>Doctorate Total</b>		<b>4</b>	<b>2</b>	<b>1</b>	<b>1</b>	<b>2</b>
	Graduate Diploma	Distinction	0	5	4	7	4
		Pass	23	35	32	23	40
		<b>Graduate Diploma Total</b>	<b>23</b>	<b>41</b>	<b>36</b>	<b>30</b>	<b>44</b>
	Master of Philosophy	High Commendation	0	0	0	0	1
		Pass	2	0	1	1	0
<b>Master of Philosophy Total</b>		<b>2</b>	<b>0</b>	<b>1</b>	<b>1</b>	<b>1</b>	
Taught Masters	Distinction	6	10	15	5	9	
	Pass	27	40	50	19	36	
	<b>Taught Masters Total</b>	<b>33</b>	<b>50</b>	<b>65</b>	<b>25</b>	<b>46</b>	
<b>Medical Sciences Total</b>		<b>89</b>	<b>107</b>	<b>124</b>	<b>87</b>	<b>112</b>	
Science & Agriculture	Doctorate	High Commendation	2	0	0	0	1
		Pass	3	3	0	0	0
	<b>Doctorate Total</b>	<b>5</b>	<b>3</b>	<b>0</b>	<b>0</b>	<b>1</b>	
	Graduate Diploma	Distinction	1	0	0	0	0
		Pass	2	0	0	0	0
	<b>Graduate Diploma Total</b>	<b>3</b>	<b>0</b>	<b>0</b>	<b>0</b>	<b>0</b>	
	Master of Philosophy	High Commendation	3	0	0	0	0
Pass		8	2	0	0	0	
<b>Master of Philosophy Total</b>		<b>11</b>	<b>2</b>	<b>0</b>	<b>0</b>	<b>0</b>	
Taught Masters	Distinction	16	0	0	2	0	
	Pass	36	9	1	3	2	
<b>Taught Masters Total</b>		<b>52</b>	<b>9</b>	<b>1</b>	<b>5</b>	<b>2</b>	
<b>Science &amp; Agriculture Total</b>		<b>71</b>	<b>14</b>	<b>1</b>	<b>5</b>	<b>3</b>	

## Trends in Graduate Output

Output of Postgraduates by Degree Type and Degree Honours – 2011/2012 to 2015/2016							
Faculty	Degree	Degree Honor	2011	2012	2013	2014	2015
Science & Technology	Doctorate	Pass	0	2	5	2	8
	<b>Doctorate Total</b>		<b>0</b>	<b>2</b>	<b>5</b>	<b>2</b>	<b>8</b>
	Graduate Diploma	Distinction	0	0	0	0	1
		Pass	0	0	1	1	0
	<b>Graduate Diploma Total</b>		<b>0</b>	<b>0</b>	<b>1</b>	<b>1</b>	<b>1</b>
	Master of Philosophy	High Commendation	0	0	1	0	0
		Pass	0	10	7	7	3
	<b>Master of Philosophy Total</b>		<b>0</b>	<b>10</b>	<b>8</b>	<b>7</b>	<b>3</b>
	Taught Masters	Distinction	0	21	22	29	23
		Pass	1	29	44	51	36
<b>Taught Masters Total</b>		<b>1</b>	<b>50</b>	<b>66</b>	<b>80</b>	<b>59</b>	
<b>Science &amp; Technology Total</b>			<b>1</b>	<b>62</b>	<b>80</b>	<b>90</b>	<b>71</b>
Social Sciences	Doctorate	High Commendation	0	4	1	3	2
		Pass	4	4	6	9	13
	<b>Doctorate Total</b>		<b>4</b>	<b>8</b>	<b>7</b>	<b>12</b>	<b>15</b>
	Graduate Certificate	Pass	0	0	3	1	6
		<b>Graduate Certificate Total</b>		<b>0</b>	<b>0</b>	<b>3</b>	<b>1</b>
	Graduate Diploma	Not Identifiable	0	0	1	1	0
		Distinction	25	21	7	7	11
		Pass	30	42	23	36	36
	<b>Graduate Diploma Total</b>		<b>55</b>	<b>63</b>	<b>31</b>	<b>44</b>	<b>47</b>
	Master of Philosophy	Pass	1	3	8	5	2
<b>Master of Philosophy Total</b>			<b>1</b>	<b>3</b>	<b>8</b>	<b>5</b>	<b>2</b>
Taught Masters	Not Identifiable	1	1	0	2	1	
	Distinction	112	115	156	102	212	
	Pass	252	322	252	190	421	
<b>Taught Masters Total</b>		<b>365</b>	<b>438</b>	<b>408</b>	<b>294</b>	<b>634</b>	
<b>Social Sciences Total</b>		<b>425</b>	<b>512</b>	<b>457</b>	<b>356</b>	<b>704</b>	
<b>Graduate Total</b>		<b>1168</b>	<b>1238</b>	<b>1240</b>	<b>1146</b>	<b>1471</b>	

## Current Snapshot 2016-2017

**Table 6.1**

Total Enrolment by Student Level and Sex - 2016/2017		
Student Level	Sex	2016
<b>Graduate</b>	Female	3340
	Male	1993
<b>Graduate Total</b>		<b>5333</b>
<b>Undergraduate</b>	Female	7127
	Male	4006
<b>Undergraduate Total</b>		<b>11133</b>
<b>Grand Total</b>		<b>16466</b>

Other students 2016/2017 are at 615.

**Table 6.2**

New Student Admissions by Faculty & Student Level - 2016/2017		
Student Level	Faculty	2016
<b>GRADUATE</b>		
	Engineering	250
	Food & Agriculture	48
	Humanities & Education	362
	Law	35
	Medical Sciences	159
	Science & Technology	163
	Social Sciences	642
<b>Graduate Total</b>		<b>1659</b>
<b>UNDERGRADUATE</b>		
	Engineering	373
	Food & Agriculture	202
	Humanities & Education	408
	Law	138
	Medical Sciences	475
	Science & Agriculture	1
	Science & Technology	664
	Social Sciences	1008
<b>Undergraduate Total</b>		<b>3269</b>
<b>Grand Total</b>		<b>4928</b>

**Table 6.3**

New Student Admissions by Programme (Top 25) - 2016/2017		
Student Level	Programme	2016
Undergraduate	MBBS Medicine & Surgery	223
Graduate	DIPG Education	190
Undergraduate	BSC Management Studies	142
Undergraduate	LLB Law	138
Undergraduate	CERT Public Administration	128
Undergraduate	BSC Leadership and Management	118
Graduate	MSC Strategic Leadership & Management	90
Undergraduate	BSC Mechanical Engineering	90
Undergraduate	BSC Nursing	87
Undergraduate	BSC Biochemistry (Science)	86
Undergraduate	BSC Psychology	84
Undergraduate	BSC Computer Science (Special)	80
Undergraduate	BSC Electrical & Computer Engineering	74
Undergraduate	BSC International Relations (Spec)	72
Undergraduate	BSC Economics	68
Undergraduate	BSC Pharmacy	64
Undergraduate	BSC Accounting (Special)	64
Undergraduate	BSC Criminology & Criminal Justice	63
Undergraduate	BSC Biology	58
Undergraduate	BA Communication Studies	57
Undergraduate	BSC Sociology	51
Graduate	MBA Business Administration	50
Undergraduate	BSC Actuarial Science (Special)	50
Undergraduate	BSC Environmental Science & Sustainable Tech (Special)	49
Undergraduate	BSC Biomedical Technology (Special)	49

## Other Students

**Table 7.1**

Total Enrolment Other Students – 2011/2012 to 2015/2016					
Student Level	2011	2012	2013	2014	2015
Undeclared	362	345	383	526	578
Undergraduate	297	243	123	137	190
<b>Grand Total</b>	<b>659</b>	<b>588</b>	<b>506</b>	<b>663</b>	<b>768</b>

**Table 7.2**

Total Enrolment Other Students by Faculty and Programme – 2011/2012 to 2015/2016							
Student Level	Faculty	Programme	2011	2012	2013	2014	2015
<b>Undeclared</b>							
	Engineering	Undeclared - Faculty of Engineering	10	7	2	16	9
	<b>Engineering Total</b>		<b>10</b>	<b>7</b>	<b>2</b>	<b>16</b>	<b>9</b>
	Food & Agriculture	Undeclared - Faculty of Food & Agriculture	0	14	13	9	8
	<b>Food &amp; Agriculture Total</b>		<b>0</b>	<b>14</b>	<b>13</b>	<b>9</b>	<b>8</b>
	Humanities & Education	Undeclared - Faculty of Humanities & Education	44	29	64	45	44
	<b>Humanities &amp; Education Total</b>		<b>44</b>	<b>29</b>	<b>64</b>	<b>45</b>	<b>44</b>
	Law	Undeclared - Faculty of Law	0	5	13	5	9
	<b>Law Total</b>		<b>0</b>	<b>5</b>	<b>13</b>	<b>5</b>	<b>9</b>
	Medical Sciences	Pre-Health - SOCS	21	11	22	23	18
		Undeclared - Faculty of Medical Sciences	0	1	0	0	1
	<b>Medical Sciences Total</b>		<b>21</b>	<b>12</b>	<b>22</b>	<b>23</b>	<b>19</b>
	Science & Agriculture	Pre-Science - N1 - SOCS	185	0	1	0	1
		Undeclared - Faculty of Science & Agriculture	45	0	0	0	0
	<b>Science &amp; Agriculture Total</b>		<b>230</b>	<b>0</b>	<b>1</b>	<b>0</b>	<b>1</b>
	Science & Technology	Pre-Science - N1	0	161	185	316	390
		Undeclared - Faculty of Science & Technology	0	55	32	30	39
	<b>Science &amp; Technology Total</b>		<b>0</b>	<b>216</b>	<b>217</b>	<b>346</b>	<b>429</b>
	Social Sciences	Undeclared - Faculty of Social Sciences	57	62	51	82	59
	<b>Social Sciences Total</b>		<b>57</b>	<b>62</b>	<b>51</b>	<b>82</b>	<b>59</b>
<b>Undeclared Total</b>			<b>362</b>	<b>345</b>	<b>383</b>	<b>526</b>	<b>578</b>
<b>Undergraduate</b>							
	No College Designated	Summer Programme - All Faculties	297	243	123	137	190
	<b>No College Designated Total</b>		<b>297</b>	<b>243</b>	<b>123</b>	<b>137</b>	<b>190</b>
<b>Undergraduate Total</b>			<b>297</b>	<b>243</b>	<b>123</b>	<b>137</b>	<b>190</b>
<b>Grand Total</b>			<b>659</b>	<b>588</b>	<b>506</b>	<b>663</b>	<b>768</b>

# Appendices

## Appendix 1

Total Student Enrolment by Level and Country of Nationality – 2011/2012 to 2015/2016					
Country of Nationality	2011	2012	2013	2014	2015
<b>GRADUATE</b>					
Not Identifiable	0	2	0	1	2
ANGUILLA	1	0	1	1	1
ANTIGUA AND BARBUDA	3	7	9	9	8
ARGENTINA	1	1	1	0	0
AUSTRALIA	1	1	1	0	0
AUSTRIA	0	0	1	1	0
BANGLADESH	1	2	2	1	0
BARBADOS	33	34	44	38	38
BELGIUM	0	0	1	0	0
BELIZE	14	13	17	8	13
BERMUDA	1	0	0	0	1
BRAZIL	1	1	1	0	1
BRITISH VIRGIN ISLANDS	9	6	0	0	0
CAMEROON	1	0	0	1	1
CANADA	9	7	10	10	11
CHINA	0	0	1	2	0
COLOMBIA	2	2	2	3	5
CUBA	0	0	1	1	1
DOMINICA	7	12	16	13	15
DOMINICAN REPUBLIC	0	0	0	1	1
FIJI	0	1	3	3	3
FINLAND	0	0	1	1	1
FRANCE	1	1	1	0	1
GERMANY	2	2	1	2	2
GHANA	1	1	2	5	3
GRENADA	8	16	20	20	17
GUYANA	177	170	166	140	140
HAITI	0	4	5	4	5
HONG KONG	1	0	0	0	0
INDIA	40	44	40	33	30
INDONESIA	0	0	1	1	1
JAMAICA	94	92	75	71	69
JAPAN	1	1	1	1	1
MONTSERRAT	2	2	0	0	0
NETHERLANDS	0	0	0	0	1
NIGERIA	27	32	24	22	15
PAPUA NEW GUINEA	0	0	0	0	2
REPUBLIC OF IRELAND (EIRE)	1	2	1	2	0
SAMOA (WESTERN SAMOA)	0	2	2	3	4
SOLOMON ISLANDS	0	1	2	3	9
SPAIN	1	0	1	2	2
SRI LANKA	1	1	1	0	0

## Appendices

Total Student Enrolment by Level and Country of Nationality – 2011/2012 to 2015/2016					
Country of Nationality	2011	2012	2013	2014	2015
ST KITTS AND NEVIS	1	3	6	3	1
ST LUCIA	39	42	45	39	44
ST VINCENT AND GRENADINES	26	26	34	29	35
SURINAME	10	19	21	28	18
THE BAHAMAS	18	6	5	8	7
TONGA	1	1	0	1	1
TRINIDAD AND TOBAGO	5213	5555	5635	5454	5377
TUNISIA	0	2	2	1	2
TUVALU	1	1	0	1	0
UGANDA	1	1	0	0	0
UNITED KINGDOM	14	11	8	9	8
UNITED STATES OF AMERICA	12	18	14	16	16
VANUATU	1	1	1	1	2
VENEZUELA	4	5	3	4	5
YUGOSLAVIA	0	0	0	0	1
ZIMBABWE (FORMERLY RHODESIA)	1	1	0	0	0
<b>Graduate Total</b>	<b>5783</b>	<b>6152</b>	<b>6229</b>	<b>5997</b>	<b>5921</b>
<b>UNDERGRADUATE</b>					
Not Identifiable	0	3	8	31	0
ANGUILLA	1	0	0	0	0
ANTIGUA AND BARBUDA	15	16	16	17	25
BARBADOS	169	176	187	180	157
BELIZE	19	18	24	15	14
BERMUDA	1	1	1	1	1
BOTSWANA	56	44	37	16	7
BRAZIL	1	0	1	0	4
BRITISH VIRGIN ISLANDS	7	4	3	4	5
CAMEROON	0	1	1	0	0
CANADA	19	20	17	15	12
CAYMAN ISLANDS	1	1	1	1	1
CHILE	1	0	0	0	0
CHINA	2	3	4	5	5
COLOMBIA	36	40	32	4	9
CUBA	0	0	0	0	1
CURACAO	0	1	1	1	0
DOMINICA	32	24	26	22	29
ECUADOR	1	0	0	0	0
EL SALVADOR	1	0	0	0	0
FRANCE	2	0	0	0	0
GERMANY	1	1	1	0	0
GHANA	0	0	1	1	3
GRENADA	46	57	63	61	62
GUADELOUPE	1	0	0	0	2
GUINEA-BISSAU	0	0	0	0	1

## Appendices

Total Student Enrolment by Level and Country of Nationality – 2011/2012 to 2015/2016					
Country of Nationality	2011	2012	2013	2014	2015
GUYANA	17	21	27	28	32
HAITI	1	1	2	0	1
INDIA	9	11	14	19	17
JAMAICA	112	117	129	128	106
JORDAN	0	0	0	1	0
KENYA	0	1	1	1	1
MARTINIQUE	0	0	3	0	1
MEXICO	0	1	0	0	1
MONTSERRAT	3	2	5	4	3
NEW ZEALAND	0	0	0	0	1
NIGERIA	4	4	6	7	11
PHILIPPINES	0	0	2	2	1
REPUBLIC OF IRELAND (EIRE)	0	0	0	1	1
RUSSIA	0	0	0	1	1
SAUDI ARABIA	0	0	1	1	1
SIERRA LEONE	0	0	0	0	1
SOUTH KOREA	2	1	2	2	2
SPAIN	0	2	1	0	0
SRI LANKA	0	0	0	1	1
ST KITTS AND NEVIS	22	22	20	26	17
ST LUCIA	106	91	94	93	96
ST VINCENT AND GRENADINES	132	120	109	90	104
SURINAME	1	0	0	0	2
TANZANIA	0	1	1	1	1
THE BAHAMAS	79	96	96	88	81
TONGA	1	3	2	3	0
TRINIDAD AND TOBAGO	12099	12013	11993	11474	11160
TUNISIA	1	0	0	1	0
TURKEY	0	0	0	0	1
TURKS AND CAICOS ISLANDS	2	2	2	2	3
UGANDA	1	1	1	0	0
UNITED KINGDOM	6	7	9	6	8
UNITED STATES OF AMERICA	39	35	35	27	34
VENEZUELA	5	11	15	9	21
VIETNAM	0	1	0	0	0
YUGOSLAVIA	0	1	1	1	0
ZIMBABWE (FORMERLY RHODESIA)	1	1	1	1	0
<b>Undergraduate Total</b>	<b>13055</b>	<b>12976</b>	<b>12996</b>	<b>12392</b>	<b>12048</b>
<b>Grand Total</b>	<b>18838</b>	<b>19128</b>	<b>19225</b>	<b>18389</b>	<b>17969</b>



# Appendices

## Appendix 2

Enrolment - All Programmes - 2015/2016		
Faculty	Programme	Total
<b>GRADUATE</b>		
<b>Engineering</b>	DIPG Construction Engineering & Management	1
	DIPG Construction Management	1
	DIPG Electrical & Computer Engineering	1
	DIPG Environmental Engineering	1
	DIPG Geoinformatics	4
	DIPG Land Administration	1
	DIPG Petroleum Engineering & Management	8
	DIPG Petroleum Engineering	2
	<b>DIPG Total</b>	<b>19</b>
	MASC Electrical & Computer Engineering	67
	<b>MASC Total</b>	<b>67</b>
	MPHIL Chemical Engineering	4
	MPHIL Civil Engineering	7
	MPHIL Electrical & Computer Engineering	8
	MPHIL Food Science & Technology	1
	MPHIL Geoscience	1
	MPHIL Industrial Engineering	2
	MPHIL Manufacturing Engineering	1
	MPHIL Mechanical Engineering	6
	MPHIL Petroleum Engineering	2
	MPHIL Petroleum Geoscience	5
	MPHIL Project Management	2
	MPHIL Surveying & Land Information	4
	MPHIL Urban & Regional Planning	3
	<b>MPHIL Total</b>	<b>46</b>
	MSC Chemical & Process Engineering	38
	MSC Civil Engineering	42
	MSC Civil with Environmental Engineering	17
	MSC Coastal Engineering & Management	14
	MSC Coastal Zone Engineering & Management	14
	MSC Construction Management	86
	MSC Engineering Asset Management	63
	MSC Engineering Management	50
	MSC Environmental Engineering	36
	MSC Food Science & Technology	42
	MSC Geoinformatics	61
	MSC Geoinformatics - Research	1
	MSC Manufacturing Engineering & Management	9
	MSC Petroleum Engineering	94
	MSC Planning & Development	1
	MSC Production Engineering & Management	15
	MSC Production Management	34

## Appendices

Enrolment - All Programmes - 2015/2016		
Faculty	Programme	Total
	MSC Project Management	307
	MSC Reservoir Engineering	17
	MSC Urban & Regional Planning	36
	MSC Water & Wastewater Services Management	10
	<b>MSC Total</b>	<b>987</b>
	PHD Chemical Engineering	4
	PHD Civil Engineering	8
	PHD Construction Management	3
	PHD Electrical & Computer Engineering	4
	PHD Food Science & Technology	4
	PHD Geoinformatics	14
	PHD Geoscience	1
	PHD Industrial Engineering	2
	PHD Manufacturing Engineering	1
	PHD Mechanical Engineering	6
	PHD Petroleum Geoscience	2
	PHD Project Management	1
	PHD Surveying & Land Information	4
	PHD Urban & Regional Planning	3
	<b>PHD Total</b>	<b>57</b>
<b>Engineering Total</b>		<b>1176</b>
<b>Food &amp; Agriculture</b>	DIPG Ag Food Safety & Quality Assurance	2
	DIPG Crop Protection	1
	<b>DIPG Total</b>	<b>3</b>
	MPHIL Ag Food Safety & Quality Assurance	1
	MPHIL Agricultural Economics	4
	MPHIL Agricultural Extension	7
	MPHIL Crop Science	8
	MPHIL Geography	9
	MPHIL Horticulture	2
	MPHIL Human Ecology	3
	MPHIL Livestock Science	2
	MPHIL Soil Science	7
	MPHIL Tropical Earth & Environmental Science	1
	<b>MPHIL Total</b>	<b>44</b>
	MSC Ag Food Safety & Quality Assurance	55
	MSC Agricultural Economics	15
	MSC Crop Protection	14
	MSC Marketing and Agribusiness	16
	MSC Tropical Animal Science & Production	36
	MSC Tropical Crop Protection	2
	<b>MSC Total</b>	<b>138</b>

## Appendices

Enrolment - All Programmes - 2015/2016		
Faculty	Programme	Total
	PHD Ag Food Safety & Quality Assurance	2
	PHD Agricultural Economics	5
	PHD Agricultural Extension	5
	PHD Crop Science	8
	PHD Geography	4
	PHD Human Ecology	5
	PHD Livestock Science	6
	PHD Soil Science	2
	PHD Tropical Earth & Environ Science	1
	<b>PHD Total</b>	<b>38</b>
<b>Food &amp; Agriculture Total</b>		<b>223</b>
<b>Humanities &amp; Education</b>	CERT University Teaching & Learning	32
	<b>CERT Total</b>	<b>32</b>
	DIPG Education	255
	DIPG TESOL	19
	DIPG University Teaching & Learning	1
	<b>DIPG Total</b>	<b>275</b>
	MA Creative Design: Entrepreneurship	12
	MA Cultural Studies	25
	MA English Language	3
	MA English Language: TESOL	1
	MA History	20
	MA Human Communication Studies	30
	MA Leadership Technical Vocational Education & Training and Workforce	15
	MA Literatures in English	30
	MA Spanish	17
	MA Speech - Language Pathology	8
	<b>MA Total</b>	<b>161</b>
	MED Education	131
	MED Educational Leadership	24
	MED Health Promotion	53
	MED Inclusive & Special Education	19
	<b>MED Total</b>	<b>227</b>
	MFA Creative Writing	27
	<b>MFA Total</b>	<b>27</b>
	MHED Tertiary Level Teaching & Learning	8
	<b>MHED Total</b>	<b>8</b>

## Appendices

Enrolment - All Programmes - 2015/2016		
Faculty	Programme	Total
	MPHIL Cultural Studies	31
	MPHIL Education	58
	MPHIL French	2
	MPHIL History	15
	MPHIL Human Communication Studies	1
	MPHIL Linguistics	9
	MPHIL Literatures in English	7
	MPHIL Spanish	1
	<b>MPHIL Total</b>	<b>124</b>
	MSC Speech-Language Pathology	1
	<b>MSC Total</b>	<b>1</b>
	PHD Cultural Studies	10
	PHD Education	62
	PHD French	1
	PHD History	1
	PHD Human Communication Studies	2
	PHD Linguistics	8
	PHD Literatures in English	13
	PHD Spanish	1
	<b>PHD Total</b>	<b>98</b>
<b>Humanities &amp; Education Total</b>		<b>953</b>
<b>Law</b>	DIPG Law	2
	<b>DIPG Total</b>	<b>2</b>
	LLM Law	21
	<b>LLM Total</b>	<b>21</b>
<b>Law Total</b>		<b>23</b>
<b>Medical Sciences</b>	DIPG Emergency Medicine	40
	DIPG Family Medicine	45
	DIPG Management of HIV Infection	18
	<b>DIPG Total</b>	<b>103</b>
	DM Anaesthesia and Intensive Care	33
	DM Anaesthetics	1
	DM Emergency Medicine	35
	DM Family Medicine	2
	DM General Internal Medicine	12
	DM Obstetrics & Gynaecology	21
	DM Ophthalmology	1
	DM Orthopaedics	16
	DM Otorhinolaryngology DM	18
	DM Paediatrics	30
	DM Psychiatry	15
	DM Radiology	30
	DM Surgery	41
	DM Urology	10
	<b>DM Total</b>	<b>265</b>

## Appendices

Enrolment - All Programmes - 2015/2016		
Faculty	Programme	Total
	MPH Public Health	26
	<b>MPH Total</b>	<b>26</b>
	MPHIL Biochemistry (Medical Science)	3
	MPHIL Community Health	1
	MPHIL Human Physiology	1
	MPHIL Medical Microbiology	5
	MPHIL Pathology	1
	MPHIL Pharmacology	2
	MPHIL Veterinary Clinical Medicine	1
	MPHIL Veterinary Microbiology	3
	MPHIL Veterinary Parasitology	2
	MPHIL Veterinary Public Health	1
	<b>MPHIL Total</b>	<b>20</b>
	MSC Clinical Psychology	46
	MSC Family Medicine	7
	MSC Medical Microbiology	17
	MSC Nursing	33
	MSC Palliative Care Medicine	8
	<b>MSC Total</b>	<b>111</b>
	PHD Biochemistry (Medical Science)	2
	PHD Community Health	2
	PHD Microbiology (Medical Science)	1
	PHD Molecular Genetics	5
	PHD Pathology	1
	PHD Pharmacology	1
	PHD Pharmacy	1
	PHD Veterinary Medicine	2
	PHD Veterinary Microbiology	1
	<b>PHD Total</b>	<b>16</b>
<b>Medical Sciences Total</b>		<b>541</b>
<b>Science &amp; Agriculture</b>	MSC Tropical Animal Science & Production	1
<b>Science &amp; Agriculture Total</b>		<b>1</b>
<b>Science &amp; Technology</b>	MPHIL Biochemistry (Science)	1
	MPHIL Chemistry	28
	MPHIL Computer Science	5
	MPHIL Environmental Biology	9
	MPHIL Mathematics	1
	MPHIL Microbiology (FST)	6
	MPHIL Physics	9
	MPHIL Plant Science	12
	MPHIL Statistics	1
	MPHIL Volcanology	2
	MPHIL Zoology	2
	<b>MPHIL Total</b>	<b>76</b>

## Appendices

Enrolment - All Programmes - 2015/2016		
Faculty	Programme	Total
	MSC Biodiversity Conservation & Sustainable Development in the Caribbean	44
	MSC Biotechnology	6
	MSC Computer Science	27
	MSC Computer Science & Technology	15
	MSC Mathematics	25
	MSC Occupational & Environmental Safety & Health	169
	MSC Renewable Energy Technology	42
	MSC Science & Management of Tropical Diversity	1
	MSC Statistics	24
	<b>MSC Total</b>	<b>353</b>
	PHD Biochemistry (Science)	1
	PHD Chemistry	14
	PHD Computer Science	13
	PHD Environmental Biology	9
	PHD Mathematics	10
	PHD Microbiology (FST)	1
	PHD Physics	12
	PHD Plant Science	9
	PHD Statistics	7
	PHD Volcanology	2
	PHD Zoology	2
	<b>PHD Total</b>	<b>80</b>
<b>Science &amp; Technology Total</b>		<b>509</b>
<b>Social Sciences</b>	CERT Authentic Business Education	19
	<b>CERT Total</b>	<b>19</b>
	DBA Business Administration	86
	<b>DBA Total</b>	<b>86</b>
	DIPG Gender & Development Studies	2
	DIPG Information Systems & Technology Management	2
	DIPG International Relations	37
	DIPG Mediation Studies	31
	DIPG Small & Medium Enterprise Management	8
	DIPG Sports Management	19
	DIPG Strategic Marketing	5
	DIPG Tourism Development & Management	7
	<b>DIPG Total</b>	<b>111</b>
	EMBA Business Administration	185
	<b>EMBA Total</b>	<b>185</b>
	IMA Strategic Marketing	79
	<b>IMA Total</b>	<b>79</b>
	IMBDI International Master of Business Development	48
	<b>IMBDI Total</b>	<b>48</b>

## Appendices

Enrolment - All Programmes - 2015/2016		
Faculty	Programme	Total
	MBA Business Administration	358
	MBA International Trade Logistics & Procurement	45
	MBA Sustainable Energy Management	69
	<b>MBA Total</b>	<b>472</b>
	MHRM Human Resource Management	92
	<b>MHRM Total</b>	<b>92</b>
	MM Marketing	25
	<b>MM Total</b>	<b>25</b>
	MPHIL Criminology & Criminal Justice	10
	MPHIL Economic Development Policy	7
	MPHIL Economics	5
	MPHIL Governance	1
	MPHIL Government	7
	MPHIL Interdisciplinary Gender Studies	6
	MPHIL International Relations	19
	MPHIL Psychology	4
	MPHIL Social Work	1
	MPHIL Sociology	24
	<b>MPHIL Total</b>	<b>84</b>
	MPM Port and Maritime Management	22
	<b>MPM Total</b>	<b>22</b>
	MSC Applied Psychology	18
	MSC Aviation Management	32
	MSC Criminology & Criminal Justice	109
	MSC Development Statistics	36
	MSC Economics	34
	MSC Financial Economics	12
	MSC Gender & Development Studies	11
	MSC Global Studies	62
	MSC Government	16
	MSC Information Systems & Technology Management	32
	MSC Institutional Innovation & Effectiveness	12
	MSC International Finance	60
	MSC Management Studies	43
	MSC Mediation Studies	55
	MSC Public Sector Management	102
	MSC Sociology	54
	MSC Sports Management	26
	MSC Strategic Leadership & Management	239
	MSC Tourism Development & Management	41
	<b>MSC Total</b>	<b>994</b>
	MSME Small & Medium Enterprise Management	69
	<b>MSME Total</b>	<b>69</b>

## Appendices

Enrolment - All Programmes - 2015/2016		
Faculty	Programme	Total
	MSW Social Work	54
	<b>MSW Total</b>	<b>54</b>
	PHD Business Administration	20
	PHD Criminology & Criminal Justice	21
	PHD Economic Development Policy	10
	PHD Economics	20
	PHD Governance	6
	PHD Government	7
	PHD Interdisciplinary Gender Studies	7
	PHD International Relations	17
	PHD Management Studies	1
	PHD Psychology	7
	PHD Social Policy	11
	PHD Social Work	5
	PHD Sociology	23
	<b>PHD Total</b>	<b>155</b>
<b>Social Sciences Total</b>		<b>2495</b>
<b>Graduate Total</b>		<b>5921</b>



## Appendices

Enrolment - All Programmes - 2015/2016		
Faculty	Programme	Total
<b>UNDERGRADUATE</b>		
<b>Engineering</b>	BSC Geomatics	140
	BSC Land Management	33
	BSC Petroleum Geoscience	52
	<b>BSC Total</b>	<b>225</b>
	BSC Chemical & Process Engineering	149
	BSC Civil Engineering	155
	BSC Civil with Environmental Engineering	56
	BSC Electrical & Computer Engineering	324
	BSC Industrial Engineering	26
	BSC Mechanical Engineering with Biosystems	28
	BSC Mechanical Engineering	375
	<b>BSC Total</b>	<b>1113</b>
	CERT Geomatics & Land Information Systems	16
	<b>CERT Total</b>	<b>16</b>
	Undeclared	15
	<b>Undeclared Total</b>	<b>15</b>
<b>Engineering Total</b>		<b>1369</b>
<b>Food &amp; Agriculture</b>	BSC Agribusiness	48
	BSC Agribusiness Management	54
	BSC Agricultural Science	14
	BSC Agricultural Technology	13
	BSC Agriculture (Special)	75
	BSC Entrepreneurship	2
	BSC Environmental & Natural Resource Management	104
	BSC Family and Consumer Sciences	11
	BSC Foods & Food Service System Management	9
	BSC General	203
	BSC General Agriculture	36
	BSC Geography	54
	BSC Geography (Special)	13
	BSC Human Ecology	43
	BSC Human Nutrition & Dietetics	161
	BSC Nutritional Sciences	19
	BSC Tropical Landscaping	11
	<b>BSC Total</b>	<b>870</b>
	DIP Agriculture	5
	DIP Institutional & Community Dietetics & Nutrition	16
	<b>DIP Total</b>	<b>21</b>
	Undeclared	7
	<b>Undeclared Total</b>	<b>7</b>
<b>Food &amp; Agriculture Total</b>		<b>898</b>

## Appendices

Enrolment - All Programmes - 2015/2016		
Faculty	Programme	Total
<b>Humanities &amp; Education</b>	BA African & Asian Studies	2
	BA Carnival Studies	10
	BA Communication Studies	203
	BA Dance	38
	BA English Language & Literature with Education	92
	BA Film	47
	BA Film Production	16
	BA Film Studies	5
	BA French	28
	BA Geography	13
	BA History	65
	BA History (Special)	5
	BA Latin American Studies	8
	BA Linguistics	67
	BA Literatures in English	144
	BA Mathematics	7
	BA Musical Arts (Special)	92
	BA Spanish	103
	BA Speech & Language Science	1
	BA Theatre Arts	67
	BA Theology	26
	BA Visual Arts (Special)	123
	<b>BA Total</b>	<b>1162</b>
	BED Early Childhood Care Education	116
	BED Primary (General)	33
	BED Primary Education	5
	<b>BED Total</b>	<b>154</b>
	CERT Art & Science of Coaching	22
	CERT Dance & Dance Education	32
	CERT Drama/Theatre in Education	22
	CERT Early Childhood Care & Develop	33
	CERT Music	54
	CERT Speech-Language Pathology	5
	CERT Technical Theatre Production	9
	CERT Visual Arts	29
	CERT Visual Arts (Special)	1
	<b>CERT Total</b>	<b>207</b>
	DIP Caribbean Sign Language Interpretation	7
	<b>DIP Total</b>	<b>7</b>
	English as a Foreign Language	38
	Undeclared	1
	<b>Undeclared Total</b>	<b>39</b>
	<b>Humanities &amp; Education Total</b>	<b>1569</b>

# Appendices

Enrolment - All Programmes - 2015/2016			
Faculty	Programme	Total	
<b>Law</b>	LLB International Relations	1	
	LLB Law	324	
	<b>LLB Total</b>	<b>325</b>	
<b>Law Total</b>		<b>325</b>	
<b>Medical Sciences</b>	BSC Dental Hygiene & Dental Therapy	49	
	BSC Nursing	284	
	BSC Optometry	96	
	BSC Pharmacy	270	
	<b>BSC Total</b>	<b>699</b>	
	DDS Dental Surgery	172	
	<b>DDS Total</b>	<b>172</b>	
	DVM Veterinary Medicine	172	
	<b>DVM Total</b>	<b>172</b>	
	MBBS Medicine & Surgery	1278	
	<b>MBBS Total</b>	<b>1278</b>	
<b>Medical Sciences Total</b>		<b>2321</b>	
<b>Science &amp; Technology</b>	BSC Actuarial Science (Special)	118	
	BSC Biochemistry (Science)	42	
	BSC Biology	422	
	BSC Biology (Special)	4	
	BSC Biomedical Technology (Special)	79	
	BSC Chemistry	90	
	BSC Chemistry & Management (Special)	59	
	BSC Chemistry (Special)	40	
	BSC Computer Science	34	
	BSC Computer Science & Management (Special)	29	
	BSC Computer Science (Special)	111	
	BSC Electronics	1	
	BSC Environmental & Natural Resource Management	40	
	BSC Environmental Science & Sustainable Technology (Special)	148	
	BSC Environmental Science	15	
	BSC General	336	
	BSC Geography	1	
	BSC Industrial Chemistry	1	
	BSC Information Technology	245	
	BSC Information Technology (Special)	2	
	BSC Mathematics	78	
	BSC Mathematics (Special)	18	
	BSC Nutritional Sciences	1	
	BSC Physics	110	
	BSC Statistics and Economics (Special)	39	
	<b>BSC Total</b>		<b>2063</b>

## Appendices

Enrolment - All Programmes - 2015/2016		
Faculty	Programme	Total
	Undeclared	17
	Undeclared Total	17
<b>Science &amp; Technology Total</b>		<b>2080</b>
<b>Social Sciences</b>	BSC Accounting	181
	BSC Accounting (Special)	43
	BSC Banking & Finance (Special)	50
	BSC Criminology & Criminal Justice	60
	BSC Economics	271
	BSC Economics (Special)	21
	BSC Government	1
	BSC Hospitality & Tourism Management (Hospitality Special)	1
	BSC Hospitality & Tourism Management (Special)	9
	BSC Hotel Management (Special)	8
	BSC Insurance & Risk Management (Special)	33
	BSC International Tourism Management (Special)	43
	BSC International Relations (Special)	312
	BSC International Tourism Management	5
	BSC Leadership and Management	327
	BSC Management Studies	572
	BSC Management Studies (Special)	39
	BSC Political Science	152
	BSC Psychology	375
	BSC Psychology (Special)	47
	BSC Public Sector Management (Special)	174
	BSC Social Work (Special)	116
	BSC Sociology	290
	BSC Sports Management	73
	BSC Tourism Management (Special)	4
	<b>BSC Total</b>	<b>3207</b>
	CERT Public Administration	242
	<b>CERT Total</b>	<b>242</b>
	DIP Public Sector Management	20
	<b>DIP Total</b>	<b>20</b>
	Undeclared	17
	<b>Undeclared Total</b>	<b>17</b>
<b>Social Sciences Total</b>		<b>3486</b>
<b>Undergraduate Total</b>		<b>12048</b>
<b>Grand Total</b>		<b>17969</b>

# Appendices

## Appendix 3

New Student Admissions by Programme - 2016/2017		
Faculty	Programme	2016
<b>GRADUATE</b>		
<b>Engineering</b>	MSC Project Management	31
	MSC Construction Management	29
	MSC Petroleum Engineering	19
	MSC Food Science & Technology	18
	MSC Electrical & Computer Engineering	16
	MSC Geoinformatics	16
	MSC Production Management	16
	MSC Reservoir Engineering	12
	MSC Manufacturing Engineering & Management	11
	MSC Chemical & Process Engineering	10
	MSC Civil Engineering	10
	MSC Coastal Zone Engineering & Management	9
	MSC Engineering Management	9
	MSC Production Engineering & Management	9
	MSC Urban & Regional Planning	8
	MSC Engineering Asset Management	4
	MPHIL Petroleum Geoscience	3
	DIPG Petroleum Engineering & Management	2
	MPHIL Geoinformatics	2
	MPHIL Electrical & Computer Engineering	1
	MPHIL Food Science & Technology	1
	MPHIL Geoscience	1
	MPHIL Industrial Engineering	1
	MPHIL Manufacturing Engineering	1
	MPHIL Petroleum Engineering	1
	MPHIL Urban & Regional Planning	1
	MSC Coastal Engineering & Management	1
	MSC Water & Wastewater Services Management	1
	PHD Electrical & Computer Engineering	1
	PHD Food Science & Technology	1
	PHD Geoinformatics	1
	PHD Geoscience	1
	PHD Mechanical Engineering	1
	PHD Petroleum Geoscience	1
	PHD Project Management	1
<b>Engineering Total</b>		<b>250</b>

## Appendices

New Student Admissions by Programme - 2016/2017		
Faculty	Programme	2016
<b>Food &amp; Agriculture</b>	MSC Agriculture Food Safety & Quality Assurance	18
	MSC Tropical Animal Science & Production	4
	MPHIL Crop Science	3
	MSC Agricultural Economics	3
	MSC Marketing and Agribusiness	3
	PHD Agricultural Economics	3
	MPHIL Agricultural Extension	2
	MPHIL Human Ecology	2
	PHD Ag Food Safety & Quality Assurance	2
	DIPG Ag Food Safety & Quality Assurance	1
	MPHIL Agricultural Economics	1
	MPHIL Livestock Science	1
	PHD Agricultural Extension	1
	PHD Crop Protection	1
	PHD Crop Science	1
	PHD Livestock Science	1
	PHD Soil Science	1
<b>Food &amp; Agriculture Total</b>		<b>48</b>
<b>Humanities &amp; Education</b>	DIPG Education	190
	MED Education	45
	MED Inclusive & Special Education	27
	CERT University Teaching & Learning	22
	MA Cultural Studies	16
	MA Leadership in Technical & Vocational Education & Training & Workforce Development	12
	MPHIL Education	8
	DIPG Interpreting Techniques	6
	PHD Literatures in English	6
	MA Creative Design-Entrepreneurship	5
	MA Spanish	4
	MPHIL History	4
	PHD Education	4
	MFA Creative Writing	3
	PHD Cultural Studies	3
	MPHIL Cultural Studies	2
	MA History	1
	MA Literatures in English	1
	MPHIL French	1
MPHIL Linguistics	1	
PHD History	1	
<b>Humanities &amp; Education Total</b>		<b>362</b>

## Appendices

New Student Admissions by Programme - 2016/2017		
Faculty	Programme	2016
Law	LLM Law	35
<b>Law Total</b>		<b>35</b>
<b>Medical Sciences</b>	DIPG Emergency Medicine	22
	MSC Clinical Psychology	17
	DIPG Management of HIV Infection	14
	MSC Medical Microbiology	14
	DIPG Family Medicine	12
	DM Surgery	11
	MPH Public Health	11
	MSC Nursing	9
	DM Anaesthesia and Intensive Care	7
	DM Emergency Medicine	7
	DM Psychiatry	7
	DM Paediatrics	4
	MSC Family Medicine	4
	DM Obstetrics & Gynecology	3
	DM Otorhinolaryngology DM	3
	DM Family Medicine	2
	DM Orthopaedics	2
	MPHIL Pharmacology	2
	MPHIL Veterinary Pathology	2
	DM General Internal Medicine	1
	DM Urology	1
	MPHIL Human Physiology	1
	MPHIL Veterinary Public Health	1
	PHD Community Health	1
	PHD Veterinary Parasitology	1
<b>Medical Sciences Total</b>		<b>159</b>

## Appendices

New Student Admissions by Programme - 2016/2017		
Faculty	Programme	2016
<b>Science &amp; Technology</b>	MSC Occupational & Environmental Safety & Health	40
	MSC Renewable Energy Technology	24
	MSC Computer Science & Technology	13
	MPHIL Chemistry	12
	MSC Biomedical Physics	12
	MSC Statistics	11
	MSC Biodiversity Conservation & Sustainable Development in the Caribbean	10
	MSC Biotechnology	8
	MSC Mathematics	5
	MPHIL Plant Science	4
	PHD Environmental Biology	4
	MPHIL Computer Science	3
	MPHIL Physics	3
	MPHIL Mathematics	2
	MPHIL Microbiology (FST)	2
	PHD Statistics	2
	MPHIL Biochemistry (Science)	1
	MPHIL Environmental Biology	1
	PHD Computer Science	1
	PHD Mathematics	1
	PHD Microbiology (FST)	1
	PHD Physics	1
	PHD Plant Science	1
MPHIL Volcanology	1	
<b>Science &amp; Technology Total</b>		<b>163</b>
<b>Social Sciences</b>	MSC Strategic Leadership & Management	90
	MBA Business Administration	50
	MSC Global Studies	34
	DIPG Mediation Studies	32
	DIPG International Relations	27
	MSC Management Studies	22
	MHRM Human Resource Management	21
	MSC Economics	21
	EMBA Business Administration	20
	IMA Strategic Marketing	20
	MSC Criminology & Criminal Justice	20
	MSW Social Work	19
	DBA Business Administration	18
	IMBDI International Master of Business Development	17
	MSC Gender & Development Studies	16
	MSC Development Statistics	15
	MSC Public Sector Management	15



## Appendices

New Student Admissions by Programme - 2016/2017		
Faculty	Programme	2016
	MSC Sociology	15
	MBA Sustainable Energy Management	14
	DIPG Sports Management	12
	MSC Mediation Studies	12
	MBA International Trade Logistics & Procurement	11
	MSC Aviation Management	11
	MSC Information Systems & Technology Management	11
	MSC Institutional Innovation & Effectiveness	10
	MSC International Finance	9
	MSC Tourism Development & Management	8
	MSC Applied Psychology	7
	DIPG Institutional Innovation & Effectiveness	5
	MPHIL International Relations	5
	PHD Business Administration	5
	MPHIL Sociology	4
	MSC Financial Economics	4
	MSME Small & Medium Enterprise Management	4
	PHD International Relations	4
	CERT Authentic Business Education	3
	DIPG Information Systems & Technology Management	3
	DIPG International Master of Business Development	3
	DIPG International Trade Logistics & Procurement	3
	DIPG Tourism Development & Management	3
	PHD Sociology	3
	DIPG Strategic Marketing	2
	MPHIL Economics	2
	DIPG Gender & Development Studies	2
	MPHIL Interdisciplinary Gender Studies	2
	PHD Interdisciplinary Gender Studies	2
	MPHIL Government	1
	MSC Sports Management	1
	PHD Criminology & Criminal Justice	1
	PHD Economic Development Policy	1
	PHD Psychology	1
	PHD Social Policy	1
<b>Social Sciences Total</b>		<b>642</b>
<b>Graduate Total</b>		<b>1659</b>

## Appendices

New Student Admissions by Programme - 2016/2017		
Faculty	Programme	2016
<b>UNDERGRADUATE</b>		
<b>Engineering</b>	BSC Mechanical Engineering	90
	BSC Electrical & Computer Engineering	74
	BSC Chemical & Process Engineering	48
	BSC Civil Engineering	40
	CERT Geomatics & Land Information Systems	28
	BSC Geomatics	23
	BSC Civil with Environmental Engineering	18
	BSC Industrial Engineering	17
	BSC Petroleum Geoscience	16
	BSC Mechanical Engineering with Biosystems	13
	BSC Land Management	6
<b>Engineering Total</b>		<b>373</b>
<b>Food &amp; Agriculture</b>	BSC Human Nutrition & Dietetics	42
	BSC Geography	32
	BSC Agriculture (Special)	25
	BSC Environmental & Natural Resource Management	25
	BSC Agribusiness	20
	BSC Human Ecology	14
	BSC Agribusiness Management	13
	DIP Institutional & Community Dietetics & Nutrition	12
	BSC Nutritional Sciences	7
	DIP Agriculture	6
	BSC Agricultural Technology	3
	BSC Entrepreneurship	2
	BSC Tropical Landscaping	1
<b>Food &amp; Agriculture Total</b>		<b>202</b>

## Appendices

New Student Admissions by Programme - 2016/2017		
Faculty	Programme	2016
<b>Humanities &amp; Education</b>	BA Communication Studies	57
	BA English Language & Literature with Education	32
	BA Visual Arts (Special)	29
	BED Early Childhood Care Education	25
	English as a Foreign Language	23
	BA Literatures in English	22
	BA Spanish	22
	BED Primary (General)	22
	CERT Early Childhood Care & Development	18
	BA Theatre Arts	17
	BA Musical Arts (Special)	16
	BA Linguistics	13
	CERT Drama/Theatre in Education	12
	CERT Music	12
	BA Film	11
	CERT Art & Science of Coaching	11
	CERT Technical Theatre Production	11
	CERT Visual Arts	11
	BA French	9
	BA Theology	9
	BA History	8
	BA Dance	6
	CERT Dance & Dance Education	5
BA Geography	4	
BA Carnival Studies	1	
BA Film Studies	1	
BA Latin American Studies	1	
<b>Humanities &amp; Education Total</b>		<b>408</b>
Law	LLB Law	138
<b>Law Total</b>		<b>138</b>

## Appendices

New Student Admissions by Programme - 2016/2017		
Faculty	Programme	2016
<b>Medical Sciences</b>	MBBS Medicine & Surgery	223
	BSC Nursing	87
	BSC Pharmacy	64
	DVM Veterinary Medicine	34
	DDS Dental Surgery	31
	BSC Optometry	23
	DIP Nursing	12
	DIP Paediatrics Haematology Oncology Nursing	1
	<b>Medical Sciences Total</b>	
<b>Science &amp; Agriculture</b>	BSC Computer Science (Special)	1
<b>Science &amp; Agriculture Total</b>		<b>1</b>
<b>Science &amp; Technology</b>	BSC Biochemistry (Science)	86
	BSC Computer Science (Special)	79
	BSC Biology	58
	BSC Actuarial Science (Special)	52
	BSC Biomedical Technology (Special)	49
	BSC Environmental Science & Sustainable Technology (Special)	49
	BSC Biology (Special)	47
	BSC Physics	42
	BSC Information Technology (Spec)	40
	BSC Environmental Science	26
	BSC Mathematics (Special)	21
	BSC Chemistry (Special)	18
	BSC Statistics and Economics (Special)	18
	BSC Chemistry	17
	BSC Mathematics	15
	BSC Chemistry & Management (Special)	12
	BSC Computer Science & Management (Special)	11
	BSC Electronics	8
	BSC Mathematics & Applied Statistics (Special)	7
	BSC Information Technology	5
	BSC Computer Science	2
	BSC Environmental & Natural Resource Management	1
	BSC General	1
<b>Science &amp; Technology Total</b>		<b>664</b>

## Appendices

New Student Admissions by Programme - 2016/2017			
Faculty	Programme	2016	
<b>Social Sciences</b>	BSC Management Studies	143	
	CERT Public Administration	128	
	BSC Leadership and Management	118	
	BSC Psychology	84	
	BSC International Relations (Special)	72	
	BSC Economics	68	
	BSC Accounting (Special)	64	
	BSC Criminology & Criminal Justice	63	
	BSC Sociology	51	
	BSC Social Work (Special)	40	
	BSC Public Sector Management (Special)	35	
	BSC Political Science	34	
	BSC International Tourism Management (Special)	27	
	BSC Sports Management	17	
	BSC Psychology (Special)	14	
	BSC Banking & Finance (Special)	11	
	BSC Management Studies (Special)	10	
	BSC Accounting	8	
	BSC Economics (Special)	6	
	DIP Public Sector Management	5	
	BSC Insurance & Risk Management (Special)	4	
	BSC Tourism Management (Special)	4	
	BSC Hotel Management (Special)	2	
	<b>Social Sciences Total</b>		<b>1008</b>
	<b>Undergraduate Total</b>		<b>3269</b>
	<b>Grand Total</b>		<b>4928</b>







UWI  
ST. AUGUSTINE  
CAMPUS