

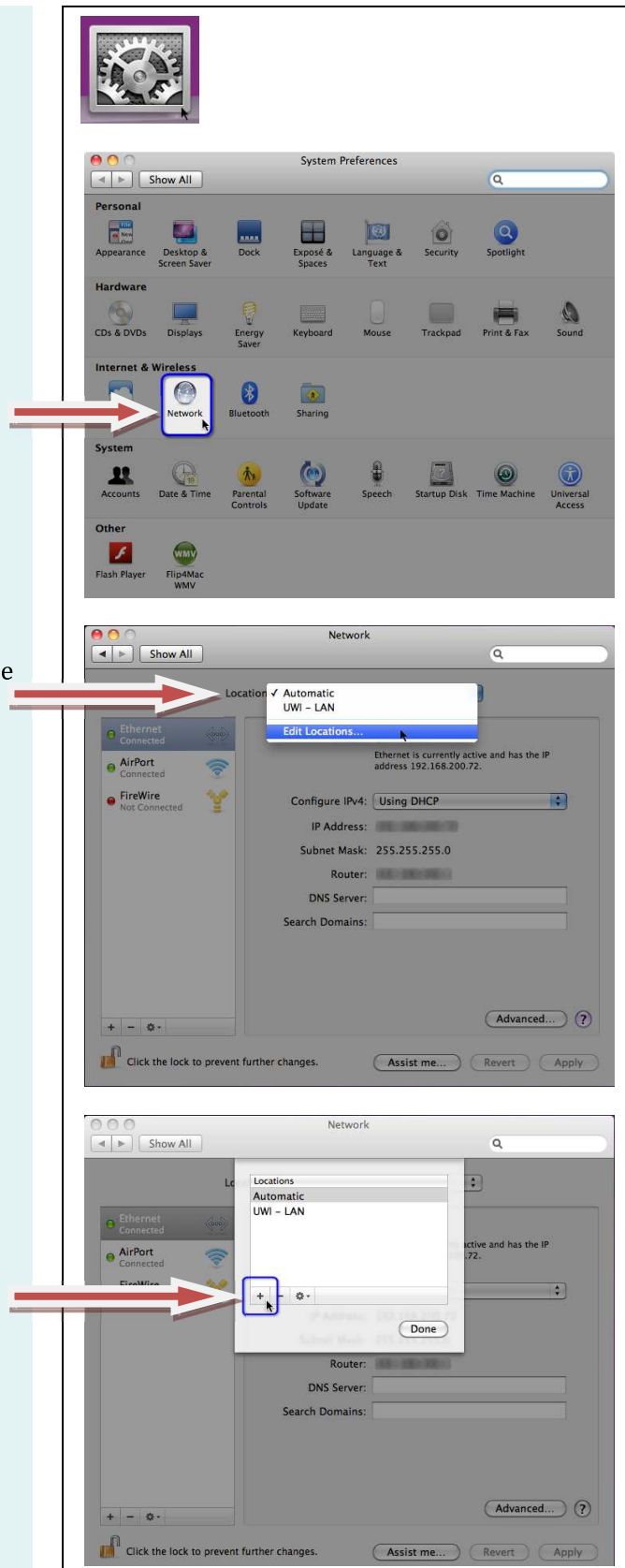
UWI St. Augustine MacOS X WiFi Setup Guide

1. Click on the **Settings** icon on your dock.

2. Click on **Network**.

3. Select **Locations** and then choose **Edit Locations**.

4. Add a new network location by clicking the plus (+) icon.



5. Enter any name for the network.

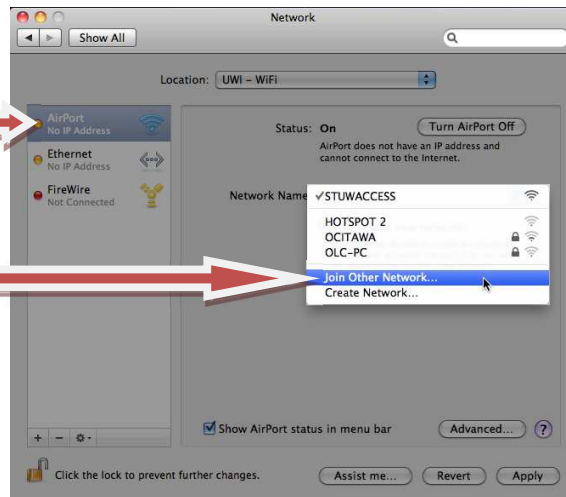
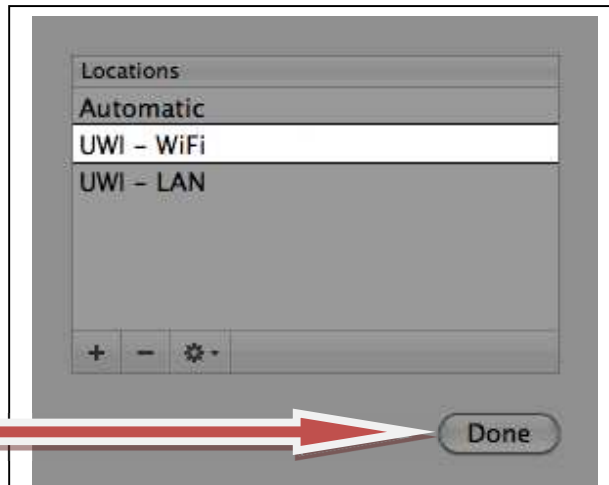
6. Click **Done**.

7. Select **Airport** and then choose **Join Other Network**.

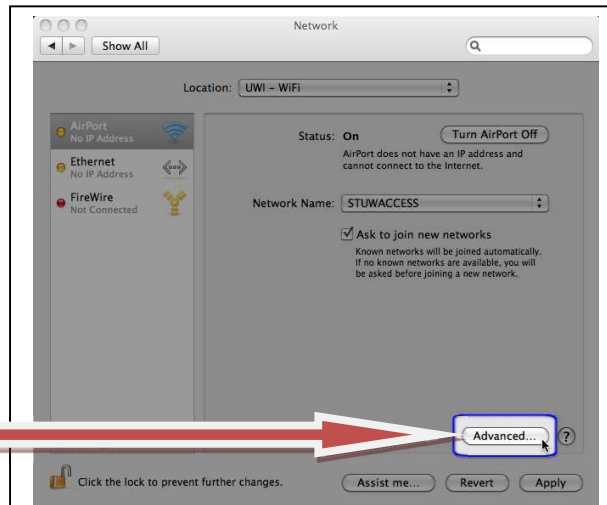
8. Configure as follows:

- ✓ Enter **STUWACCESS** (All caps) as the Network Name
- ✓ Leave the Security setting to **None**
- ✓ Check **Remember this network**

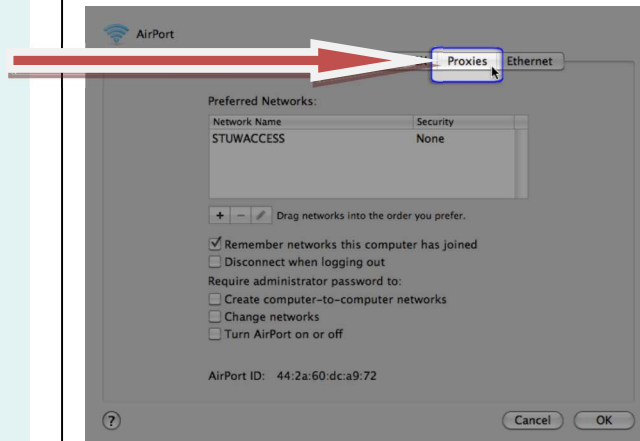
9. Click **Join**



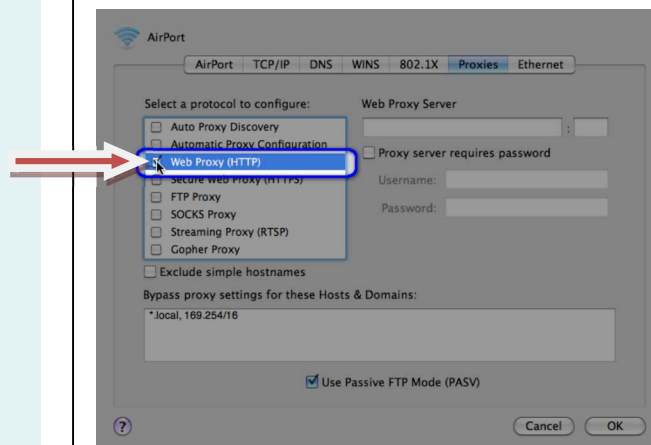
10. Click on the **Advanced** button.



11. Select the **Proxies** tab.



12. Check **Web Proxy (HTTP)**.



13. Enter the following information.

Web Proxy Server:

192.168.224.5

Port: 8080

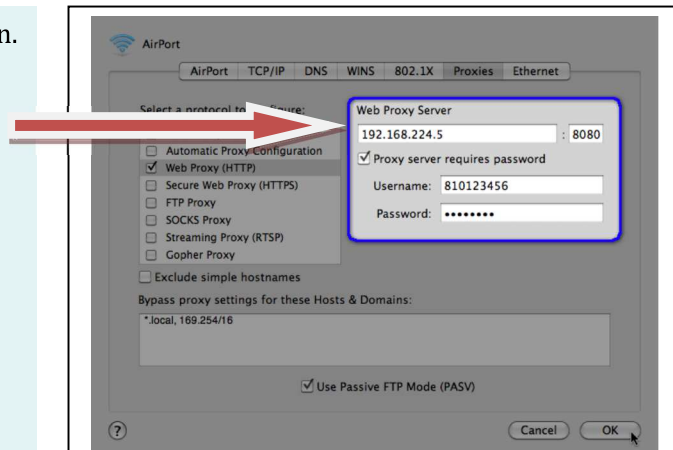
Check **Proxy server requires password**

Username:

studentID

Password:

myUWI_password



14. Check **Secure Web Proxy (HTTPS)** and enter the following information.

Web Proxy Server:

192.168.224.5

Port: 8080

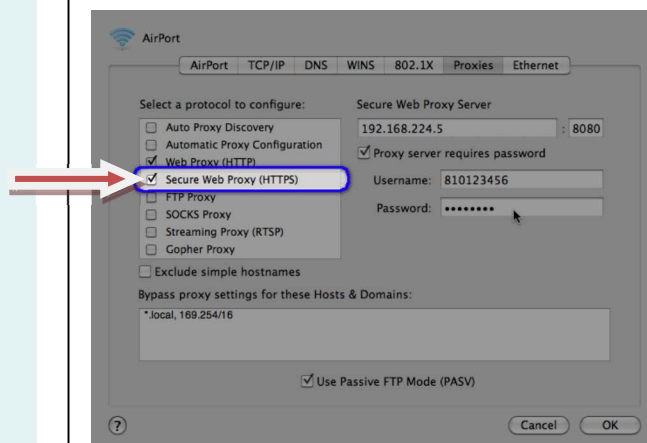
Check **Proxy server requires password**

Username:

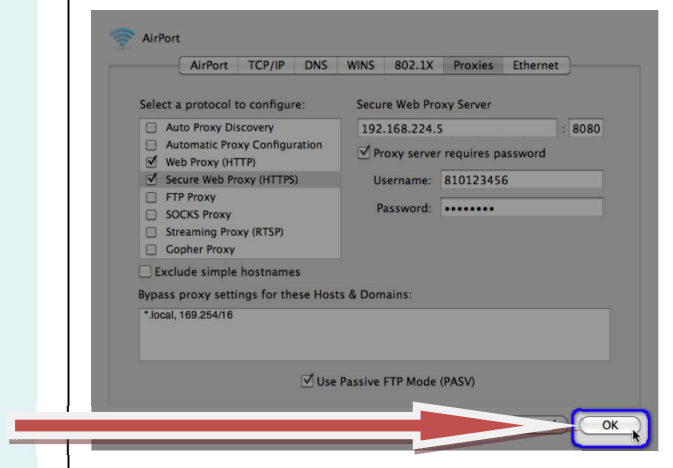
studentID

Password:

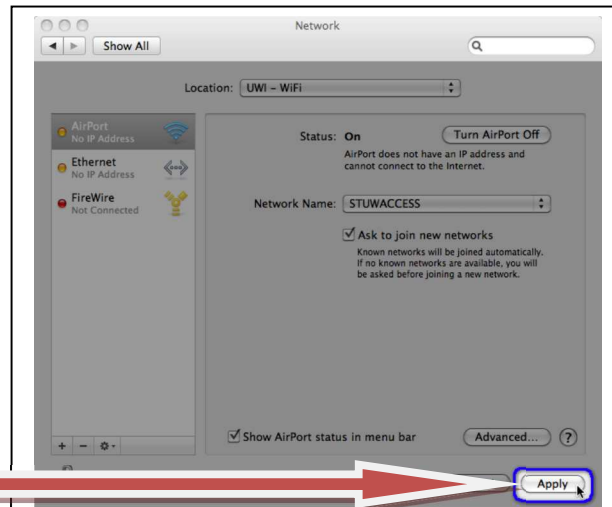
myUWI_password



15. Click **OK**.



13. Click **Apply**.



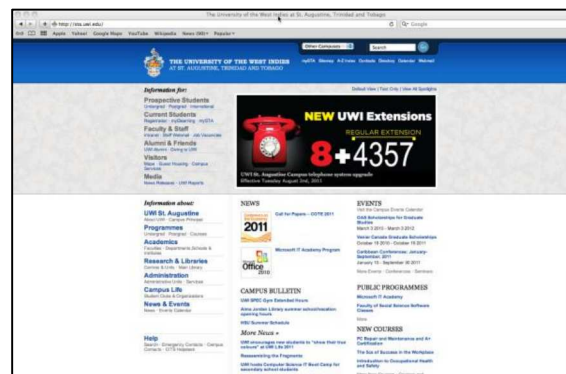
14. Open **Safari**.



15. Select **Always Allow** when prompted, to store the credentials for 192.168.224.5 in your keychain.



16. You should be able to surf the web now.



If you have any problems, please contact our ServiceDesk at (868) 662-2002 ext 84357 (8HELP)